

Provost's ACADEMIC DASHBOARD

DECEMBER 2018

QUALITY
OF THE
FACULTY

PAGE 1

63%

OF STUDENTS RAISE THEIR
PERFORMANCE DUE TO
FACULTY HIGH STANDARDS

QUALITY
OF THE
STUDENTS

PAGE 4

1397

AVERAGE SAT SCORE

QUALITY
OF THE
STUDENT
EXPERIENCE

PAGE 5

94%

6 YEAR
GRADUATION
RATE

\$394M

IN NEW RESEARCH AWARDS

FACULTY
DIVERSITY

19%

TOTAL MINORITY



YIELD

39%

FALL 2018



GLOBAL EXPERIENCES

21%

UNDERGRADUATE PARTICIPATION IN
CREDIT-BEARING STUDY ABROAD



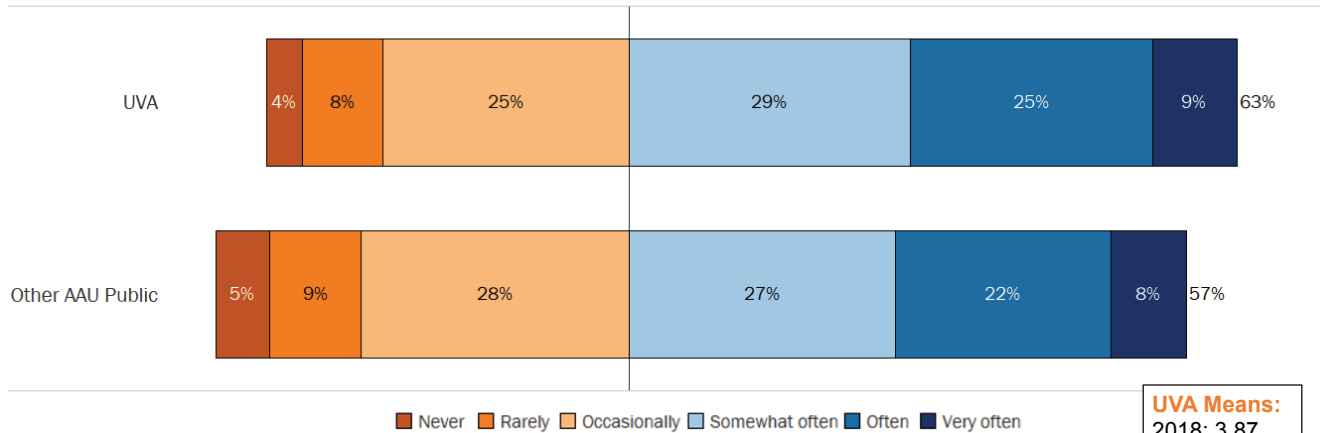
42,000+

STUDENTS ATTENDED ARTS
EVENTS IN 2017



Teaching Excellence

How frequently during this academic year have you increased your academic effort due to the high standards of a faculty member?

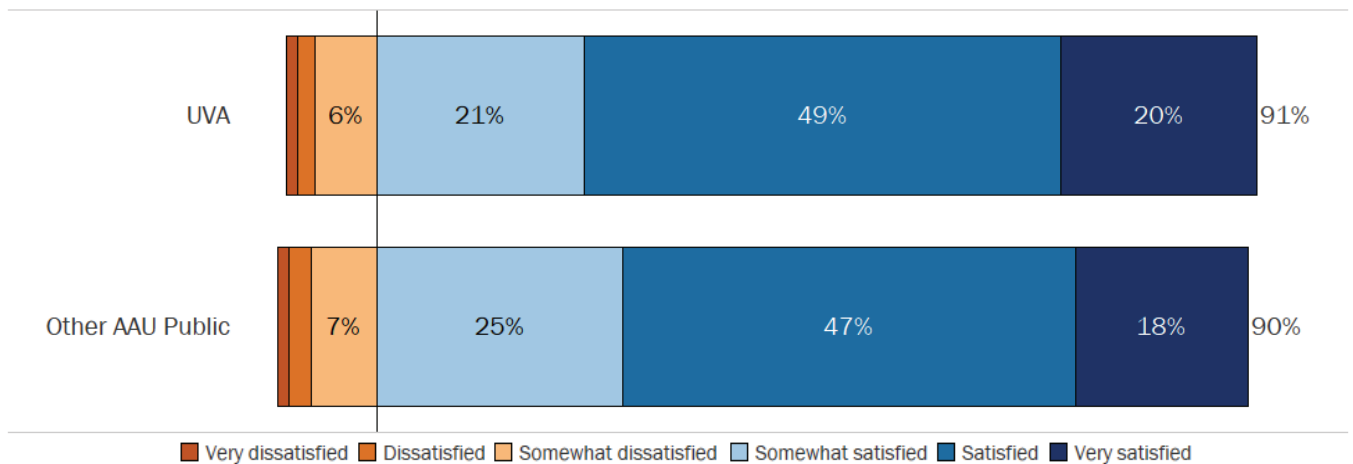


UVA Means:
 2018: 3.87
 2016: 3.92
 2015: 3.67
 2014: 3.77
 2013: 3.67

Source: Student Experience in the Research University (SERU) Survey: 2018
 AAU Public Participants: University of Michigan, University of Minnesota, Rutgers University, University of Oregon,
 University of Pittsburgh, University of Texas at Austin, Purdue University, University of Iowa, Michigan State University
 Data are weighted by school.

Teaching Excellence

How satisfied are you with the quality of faculty instruction?



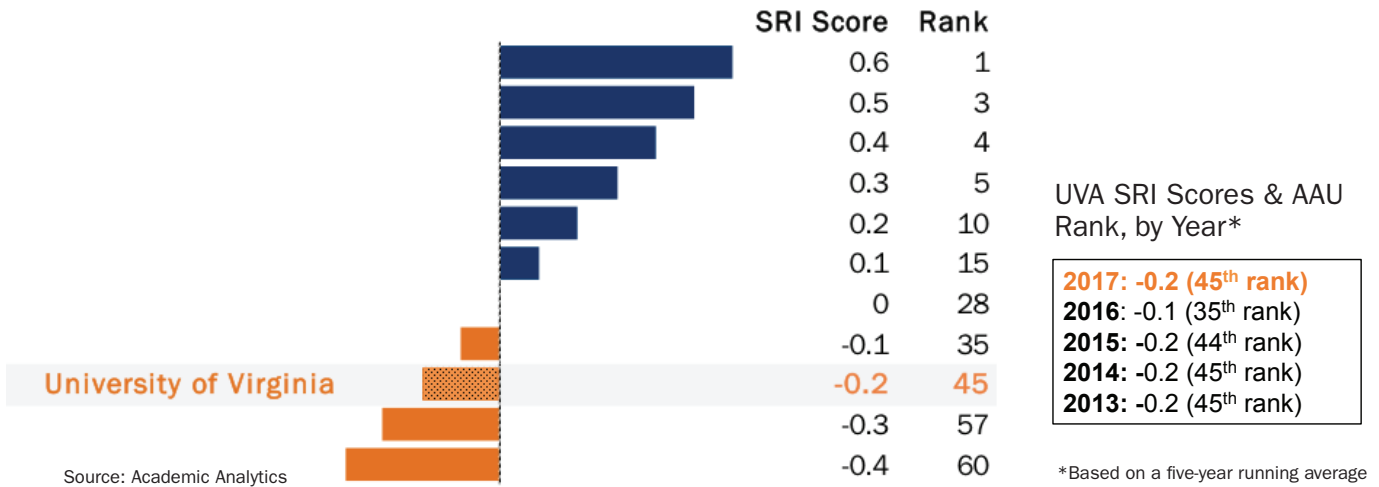
UVA Means:
 2018: 4.76
 2016: 4.78
 2015: 4.76
 2014: 4.79
 2013: 4.83

Source: Student Experience in the Research University (SERU) Survey: 2018
 AAU Public Participants: University of Michigan, University of Minnesota, Rutgers University, University of Oregon,
 University of Pittsburgh, University of Texas at Austin, Purdue University, University of Iowa, Michigan State University
 Data are weighted by school.



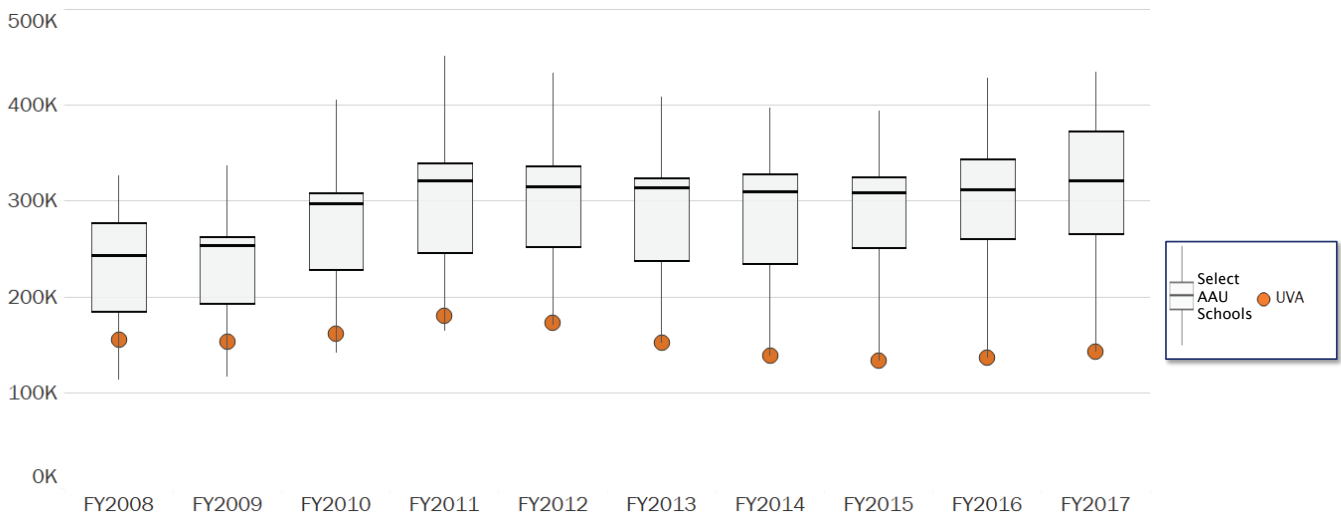
Scholarly Productivity

2017 Scholarly Research Index (SRI) Scores for AAU Universities



Research Funding

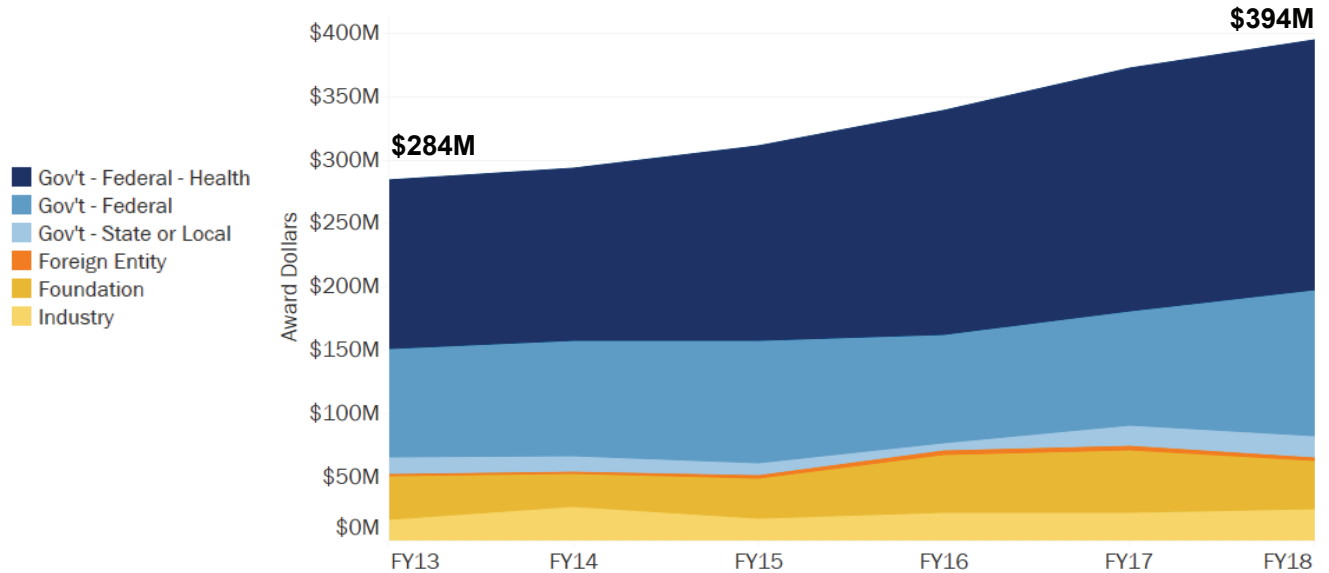
Federal Research Expenditures per TTT Faculty Member, by Fiscal Year



Source: NSF HERD Survey
 Select AAU Schools: University of Michigan, Penn, UCLA, Duke, University of North Carolina, Cornell, Vanderbilt, Berkeley, Washington University in St. Louis, Northwestern, Emory, University of Maryland, New York University, UVA



Award Dollars by Year and Broad Funding Category, FY 2013 – FY 2018



Source: UVA Sponsored Programs

Note: There has been a change to methodology this year, which, if included here, would affect comparisons to past years. We expect the new methodology to be applied going forward.

Faculty Diversity

Percentage of Faculty Women, African American, and Underrepresented Minority at AAU Institutions, by Year

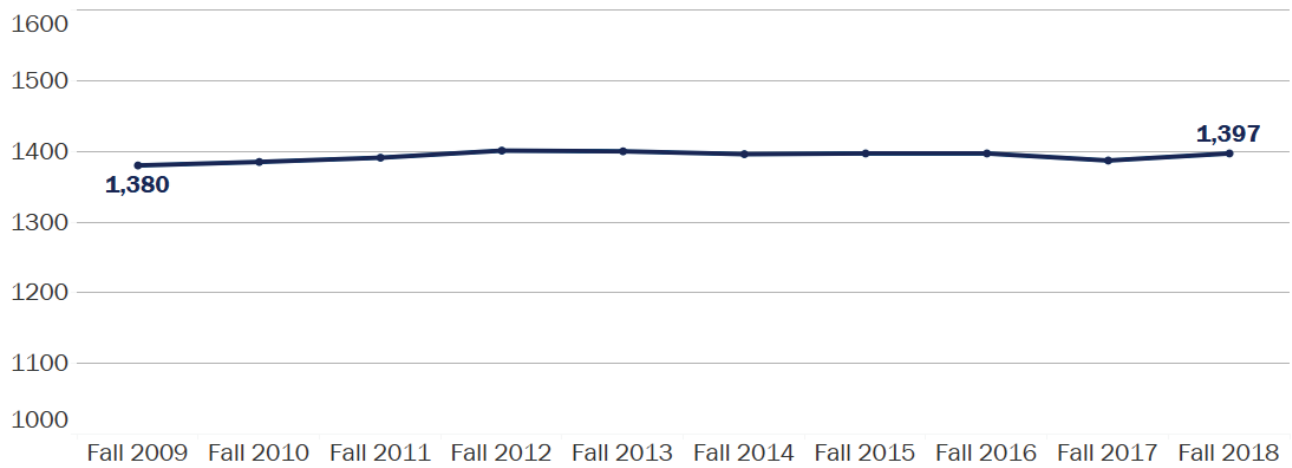


Source: IPEDS



Average SAT Score

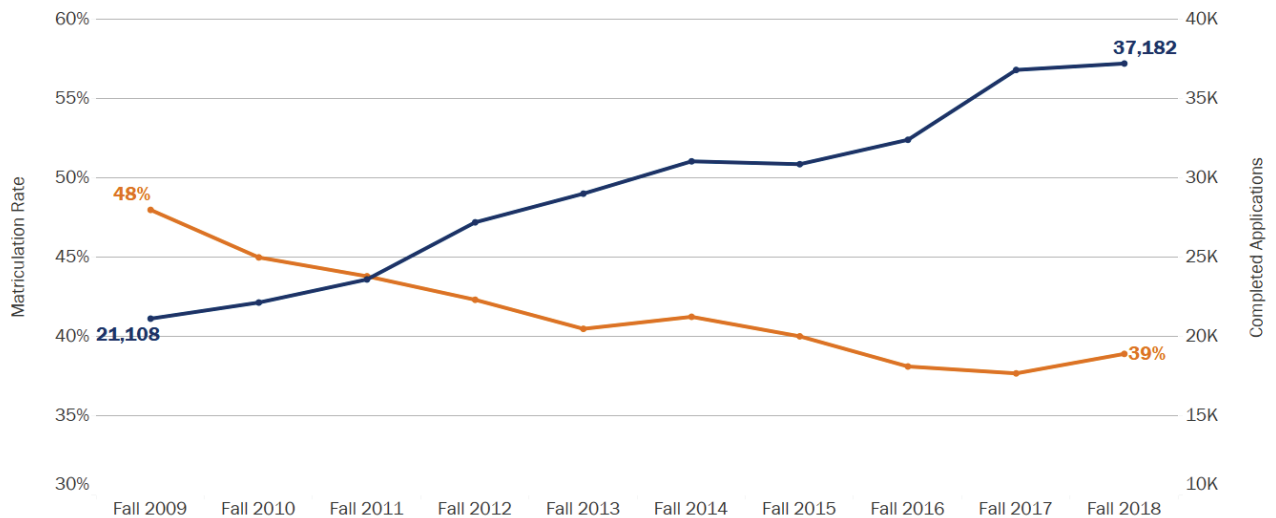
Math + Verbal, Maximum Score = 1,600
First-Time First Year Students Entering Fall 2009-Fall 2018



Note: A redesigned SAT was released in March 2016. For the purpose of longitudinal comparison within this chart, all old SAT scores were converted to new SAT scores using concordance tables provided by the College Board.

Matriculation Rate

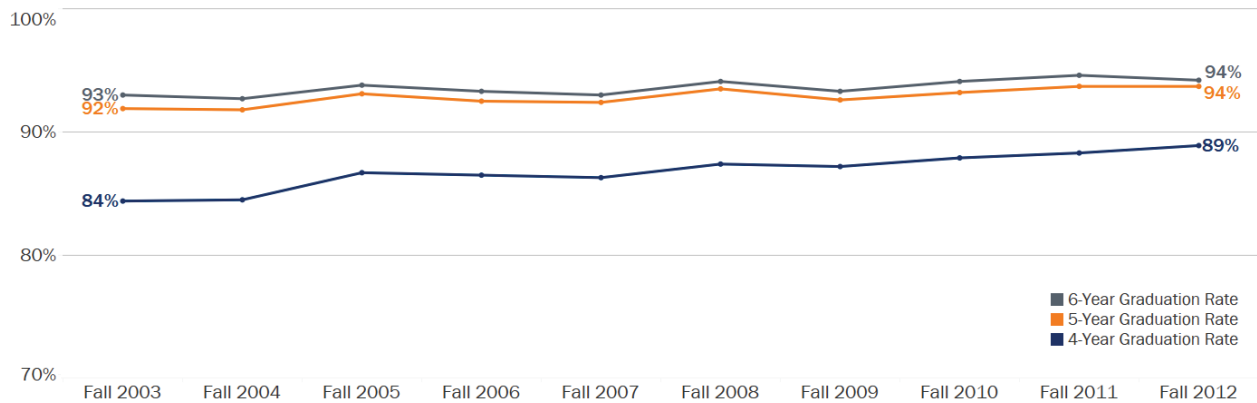
Completed Applications and Matriculation Rate
First-Time First Year Students Entering Fall 2009-Fall 2018





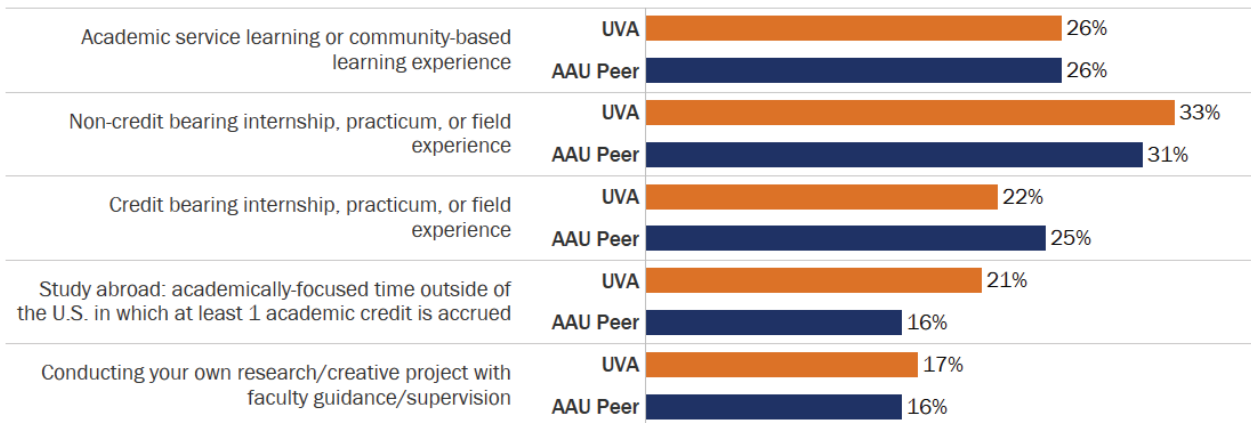
Graduation Rates: 4-, 5-, and 6-Year

First-Time First-Year Students Entering Fall 2003–Fall 2012



Students: High-Impact Experiences

While a student at this university, have you completed or are you now participating in the following activities?



% Responding Yes, doing now or have done

Source: Student Experience in the Research University (SERU) Survey: 2018
 AAU Public Participants: University of Michigan, University of Minnesota, Rutgers University, University of Oregon, University of Pittsburgh, University of Texas at Austin, Purdue University, University of Iowa, Michigan State University. Data are weighted by school.

Students: Involvement in the Arts

2017

- 42,000+ Students attending Arts Events
- Nearly 12,000 Students actively participating in the Arts

2016

- 26,081 Students attending Arts Events
- 10,022 Students actively participating in the Arts