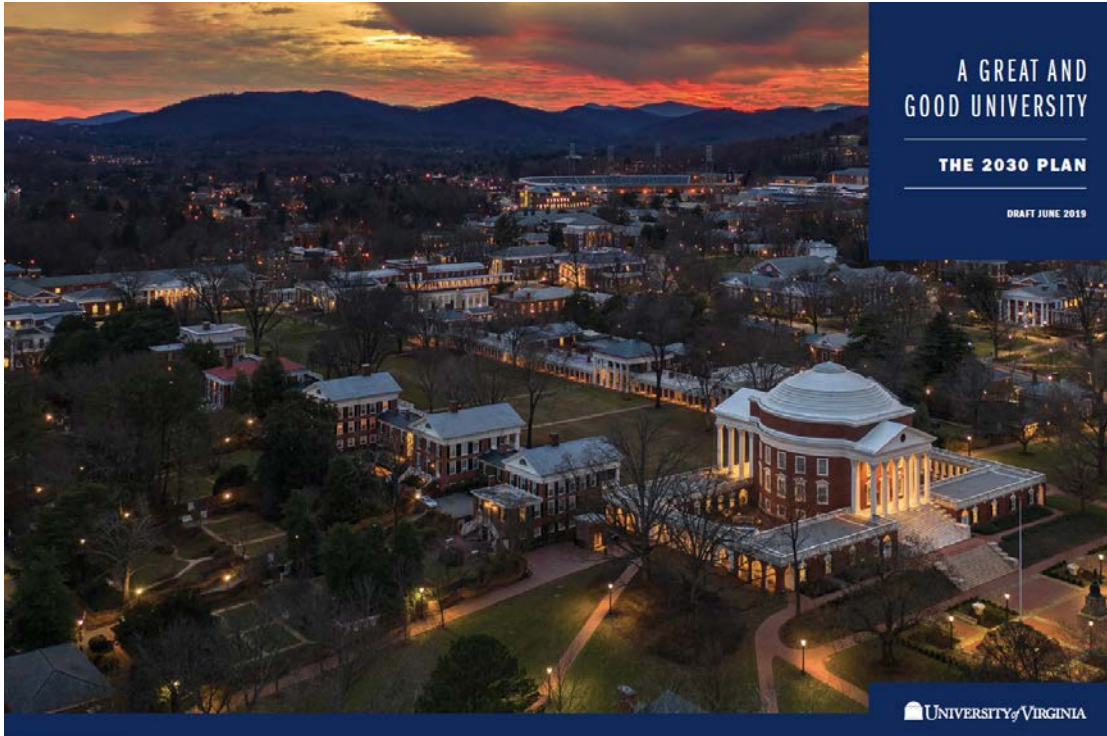




Public Comment Session – Educational Workshop
November 8, 2019

A Great and Good University

The 2030 Plan: Strategic Goals



Strategic Goals:

- Strengthen Our Foundation
- Cultivate the Most Vibrant Community in Higher Education
- Enable Discoveries That Enrich and Improve Lives
- Make UVA Synonymous with Service

University of Virginia Value Proposition

96.9%

1-Year Retention Rate

Stable retention rate for first-time first-year students over the last 25 years

6,983

Degrees Awarded, 2018

10% increase over the last decade

95/99

Return On Investment Rating

Princeton Review rating covering starting and mid-career salaries, and career social impact

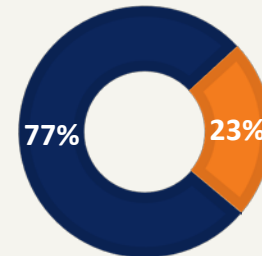
100%

Financial Need Met

Percentage of freshman with need who received financial aid

One of Two Public Universities

Financial Aid Distribution



■ Scholarships/Grants

■ Loans/Jobs

15:1

Student-Faculty Ratio

3,104

Education Abroad Participants

Listed among the top 25 US universities by the Institute for International Education for the number of students awarded education abroad credit

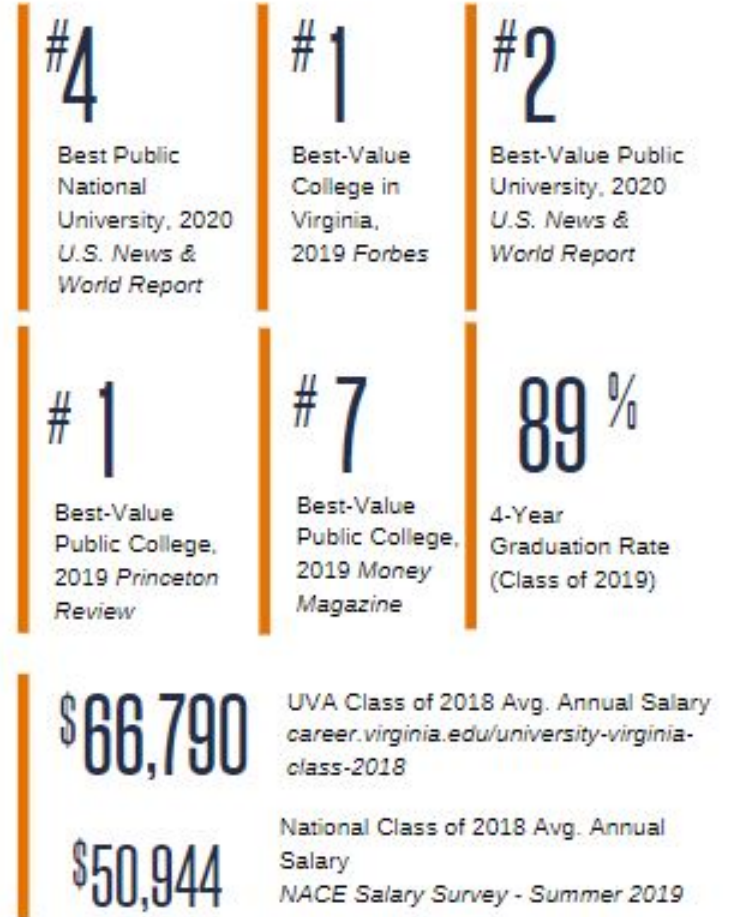
53

US Rhodes Scholarships

Number of winners, 1904 - 2019

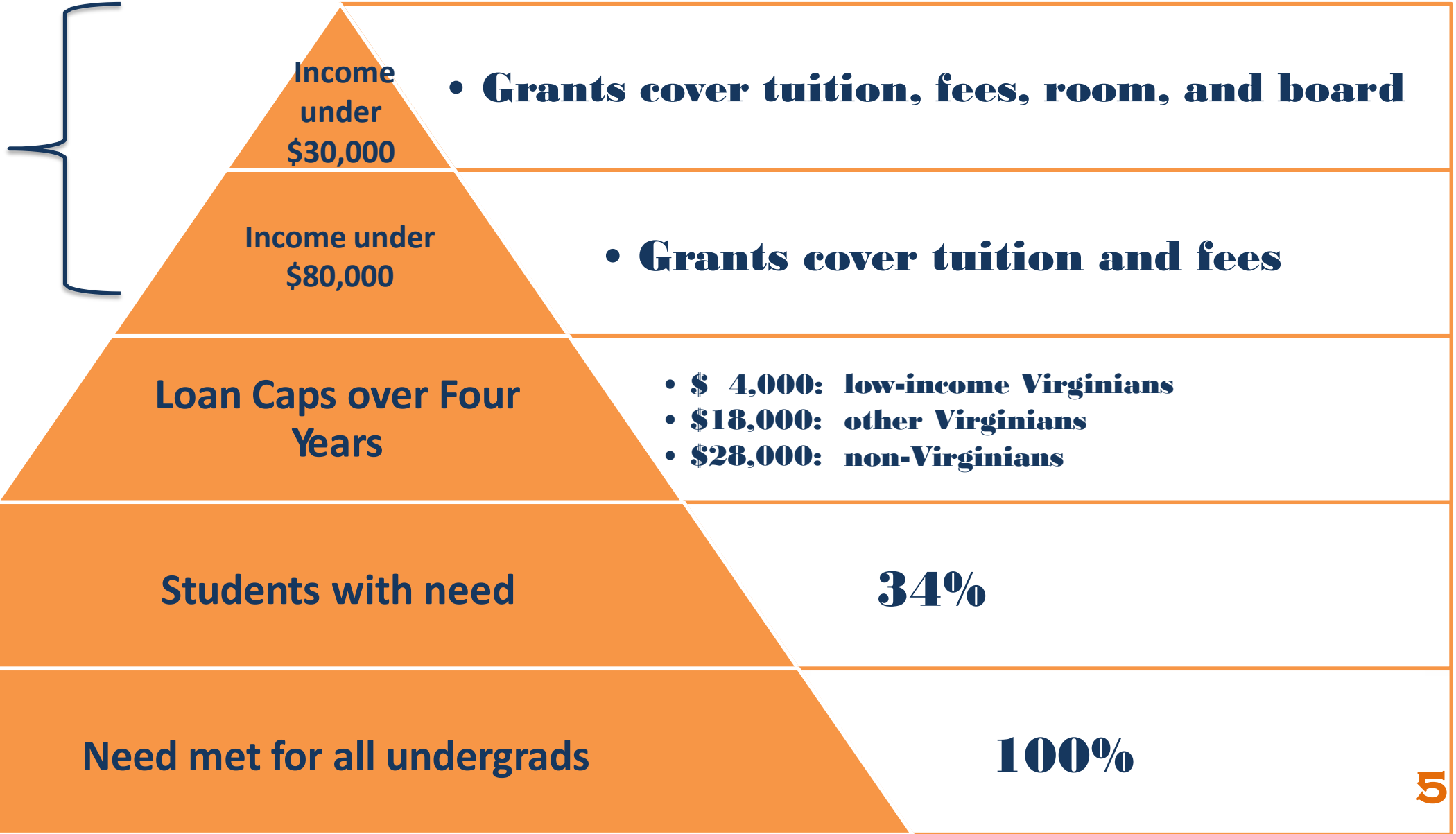
Tuition Philosophy

- Prioritize **Affordability, Accessibility and Maintaining High Quality**
 - Metrics – graduation rates, job and graduate school placement, minimal tuition increases
 - AccessUVA meets 100% of demonstrated need for all undergraduate students and limits debt
- Tuition is last resort; look first to other revenues and savings



AccessUVA

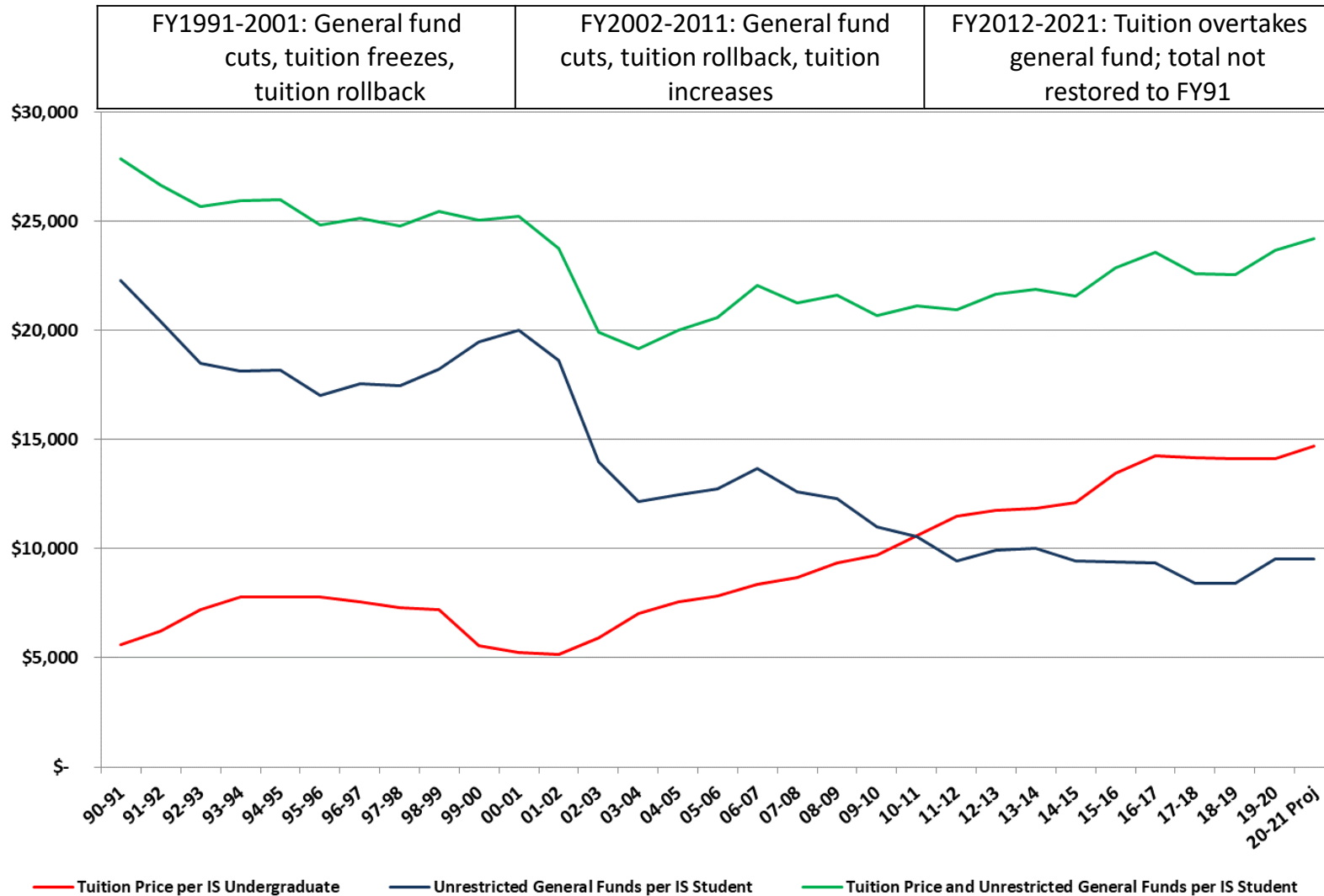
Virginia families receive



Changing Relationship Between State Appropriation and Tuition In Funding Educational Costs (in 2020 dollars)

- Responsibility for funding educational costs has shifted from the taxpayer to the student
- Over 30 years, the combined investment from student and state is less than 1990-91 (inflation-adjusted)
- Increases in tuition have not kept pace with declines in general funds, **leaving a gap of \$3,648 per student in 2020-2021**
- Differential tuition, and increases in out-of-state tuition, endowment return, and philanthropy have been critical to maintain excellence

Thirty Years of State Appropriation and In-State (College) Undergrad Tuition (in 2020 dollars)



Note: Tuition used is the in-state, undergraduate College rate

How We Spend Tuition and State Funds to Educate Students

42¢

FACULTY SALARY AND BENEFITS

25¢

LIBRARIES, ACADEMIC TECHNOLOGY, STUDENT ADVISING AND OTHER ACADEMIC SUPPORT

14¢

MAINTAIN CLASSROOMS, LABS, LIBRARIES, OFFICES AND OUTDOOR SPACES AS WELL AS PAY UTILITIES



7¢

FINANCIAL SUPPORT FOR GRADUATE TEACHING ASSISTANTS

6¢

GENERAL ADMINISTRATION*

5¢

CAREER COUNSELING, DEAN OF STUDENTS OFFICE SUPPORT, ADMISSIONS AND FINANCIAL SERVICES

1¢

PUBLIC OUTREACH PROGRAMMING INCLUDING EARLY EDUCATION PROGRAMS THROUGHOUT THE STATE

*General Administration includes police and emergency preparedness as well as compliance with state and federal regulations including Title IX, the Clery Act, FERPA, the Americans with Disabilities Act, the Equal Opportunity Act, the Fair Labor Standards Act, the Federal Information Security Management Act, and other federal mandates.

2020-2021 Operating Challenges and Opportunities

- Potential Commonwealth budget reductions (5% = \$7M)
- What cost increases are we facing?
 - 3% merit faculty increase: \$8.6 million
 - 3% merit staff increase: \$8.4 million
 - 2% inflationary cost on non-personal services: \$14.9 million
 - Increase support for enrollment and student services, utility increases, first generation programming, targeted faculty recruitment, library services

2020-2021 Undergraduate Tuition and Fee Proposal

For undergrads in the College of Arts & Sciences, Curry School of Education and Human Development, School of Architecture, McIntire School of Commerce, and School of Continuing and Professional Studies and returning undergrads in the School of Engineering and Applied Sciences, Batten School of Leadership and Public Policy, and School of Nursing:

In-state tuition: +3.0-4.0%

Out-of-state tuition: +3.0-4.0%

Required fees: Up to +\$174

The majority of the increase is associated with an expansion of student health and wellness services in a new facility.

Questions?

**Please email any questions to
respond_uva_tuition@virginia.edu**