



UNIVERSITY
of VIRGINIA

Board of Visitors Buildings & Grounds Committee
June 9, 2017

Agenda

Consent Agenda

- Demolition of Storage Buildings at Old Ivy Road Office Building Site
- Architect/Engineer Selections:
 - Emily Couric Clinical Cancer Center Fourth Floor Fit-Out
 - Ivy Mountain Orthopedics Center

Action Item: Brandon Avenue Upper-Class Student Residence Hall Schematic Design Approval

Schematic Design Review: Memorial to Enslaved Laborers

Committee Discussion

- Sustainability Report
- Ivy Corridor Landscape Framework Plan
- North Grounds/Athletics Precinct Planning Study

Consent Agenda



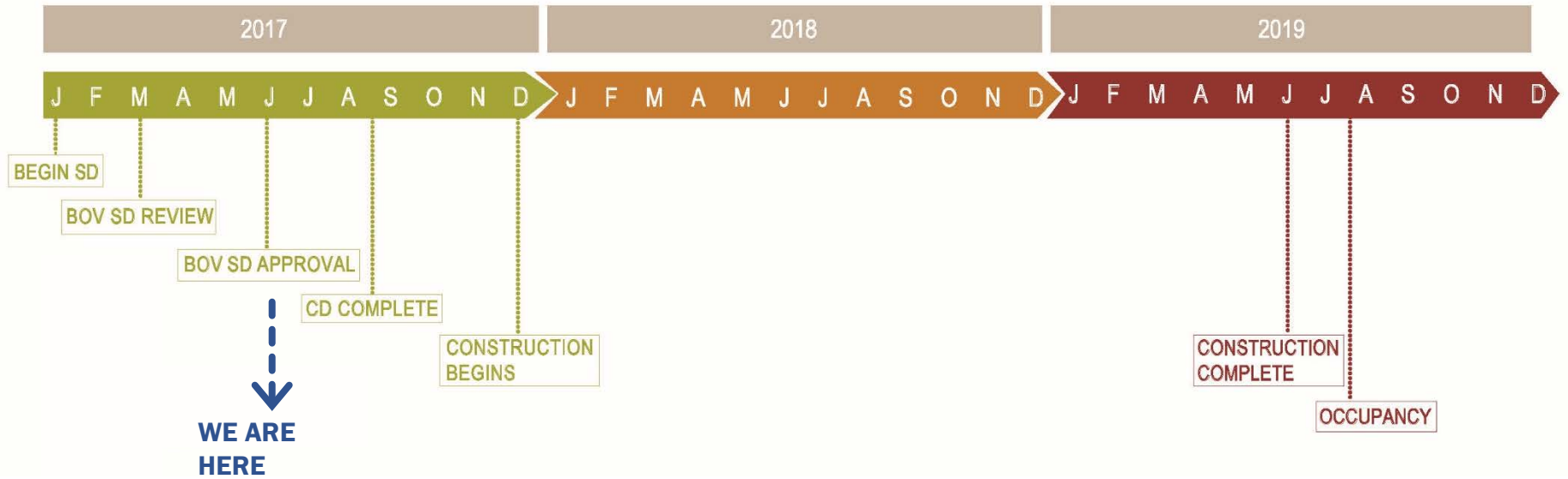
Consent Agenda

- Demolition of Storage Buildings at Old Ivy Road Office Building Site
- Architect Engineer Selections
 - Emily Couric Clinical Cancer Center Fourth Floor Fit-Out:
Wilmot Sanz of Gaithersburg, MD
 - Ivy Mountain Orthopedics Center:
ZGF Architects of Washington, D.C.

Schematic Design Approval: Brandon Avenue Upper-Class Student Residence Hall



Project Timeline



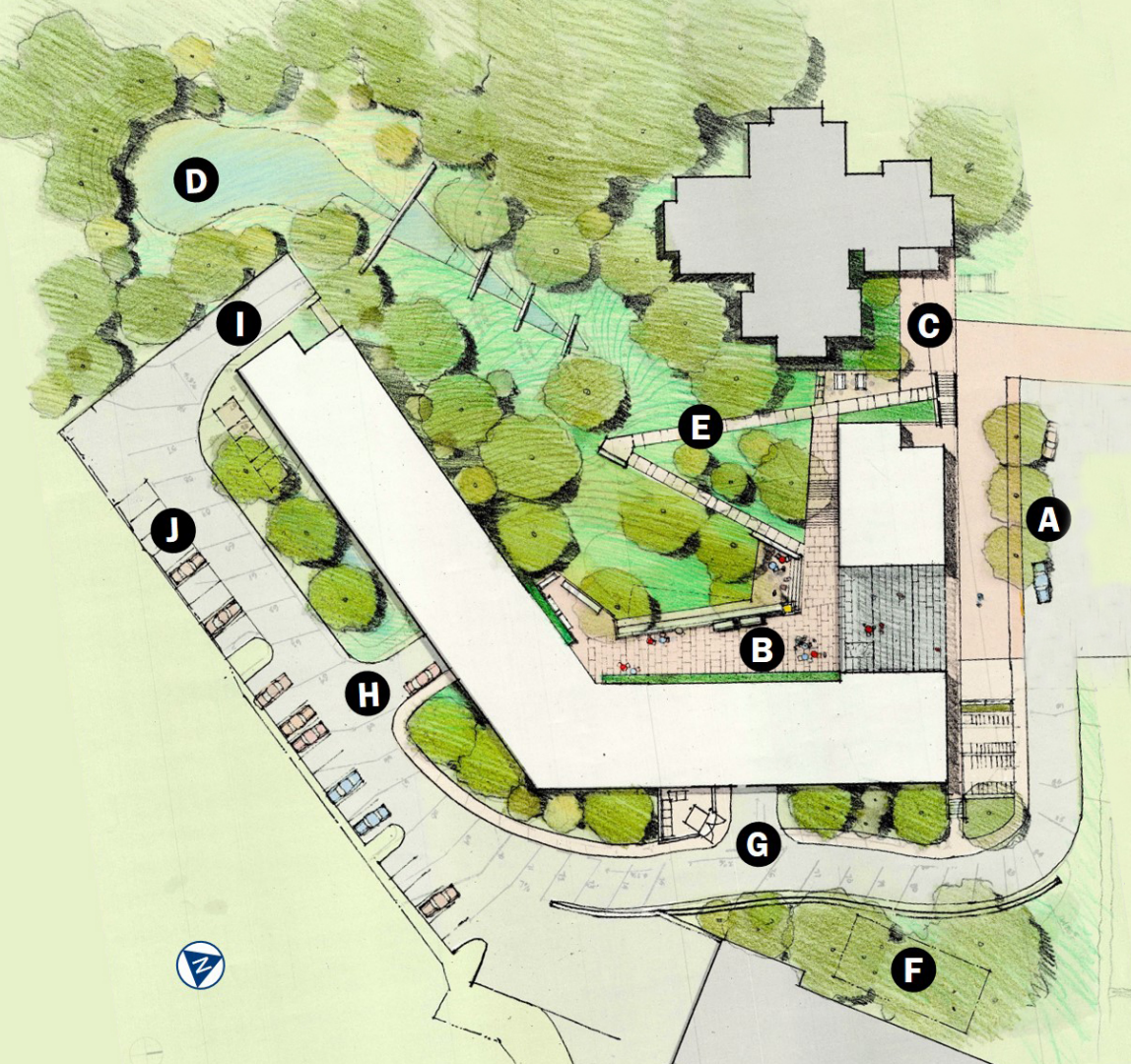
“Green Street” Landscape Plan



Site Landscape Plan

Key

- A** Arrival Court
- B** Garden Court
- C** Bice Court
- D** Storm Water Management Feature
- E** Ramp Switchback
- F** Lee Cemetery
- G** P1 Garage Entry
- H** P2 Garage Entry
- I** Fire Truck Access
- J** OPSC Parking



Building Program

Total Student Beds: 331

Total Additional Beds: 6 (5 RAs + 1 SD)

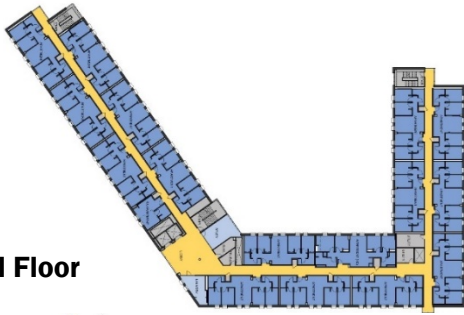
Total Building GSF: 145,100 (parking NIC)

Campus Use GSF: 11,100

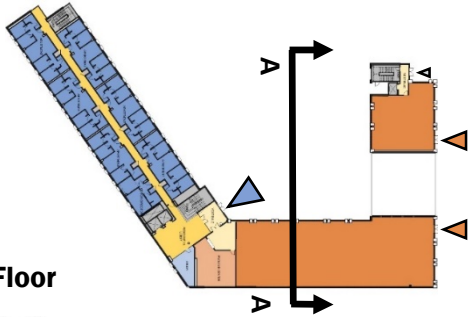
Typical Residential Floor GSF: 25,000

Parking Spaces: 144

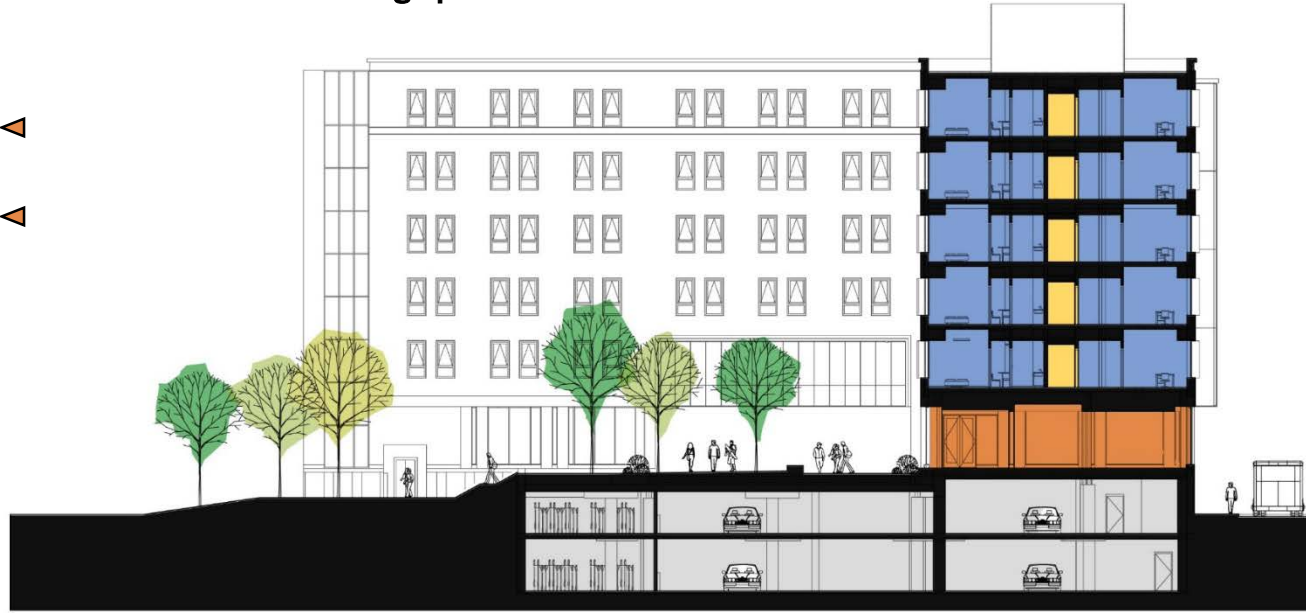
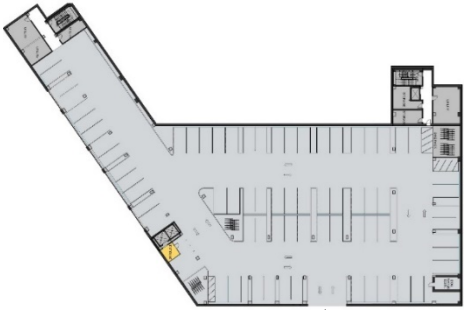
Typical Floor



Ground Floor



Parking Floor (P1 & P2)



Building Section

Sustainability Opportunities



Highest appropriate LEED level

Well insulated and air tight construction



Very high energy efficiency and user comfort



Integrated waste management



Passive before active cooling strategies



Maximum use of daylight



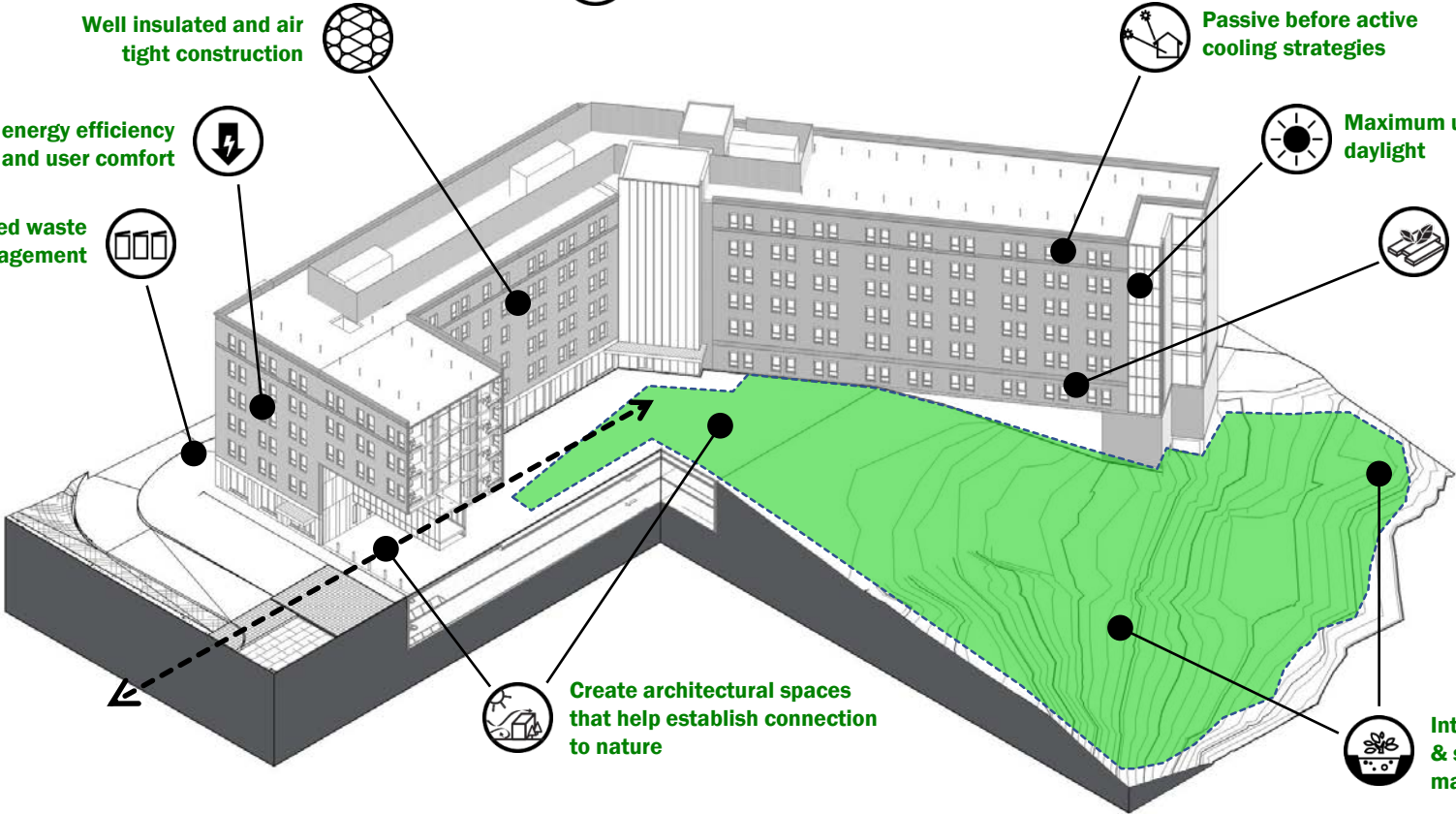
Healthy "Red List" free building materials



Create architectural spaces that help establish connection to nature



Integrated landscape & storm water management



Building Materials and Precedents

Contrasting Base

- Cast Stone



MINOR HALL

Exterior Walls

- Brick



ALDERMAN ROAD DORMS

Windows and Glazing

- Vertical Windows



NEW CABELL HALL



ALDERMAN LIBRARY



ONEIL HALL



BROWN COLLEGE



SOUTH LAWN



RESERVED PARKING
K2
PERMITS
←
MON-FRI
7:30AM-5:00PM
NO PARKING AFTER 10:00AM
DAYS OF HOME FOOTBALL GAMES
TOWING ENFORCED



800 RANDOLPH AVENUE











Schematic Design Review: Memorial to Enslaved Laborers





MEEJIN YOON



ERIC HÖWELER

Höweler + Yoon Architecture



FRANK DUKES

Community Engagement



MABEL WILSON

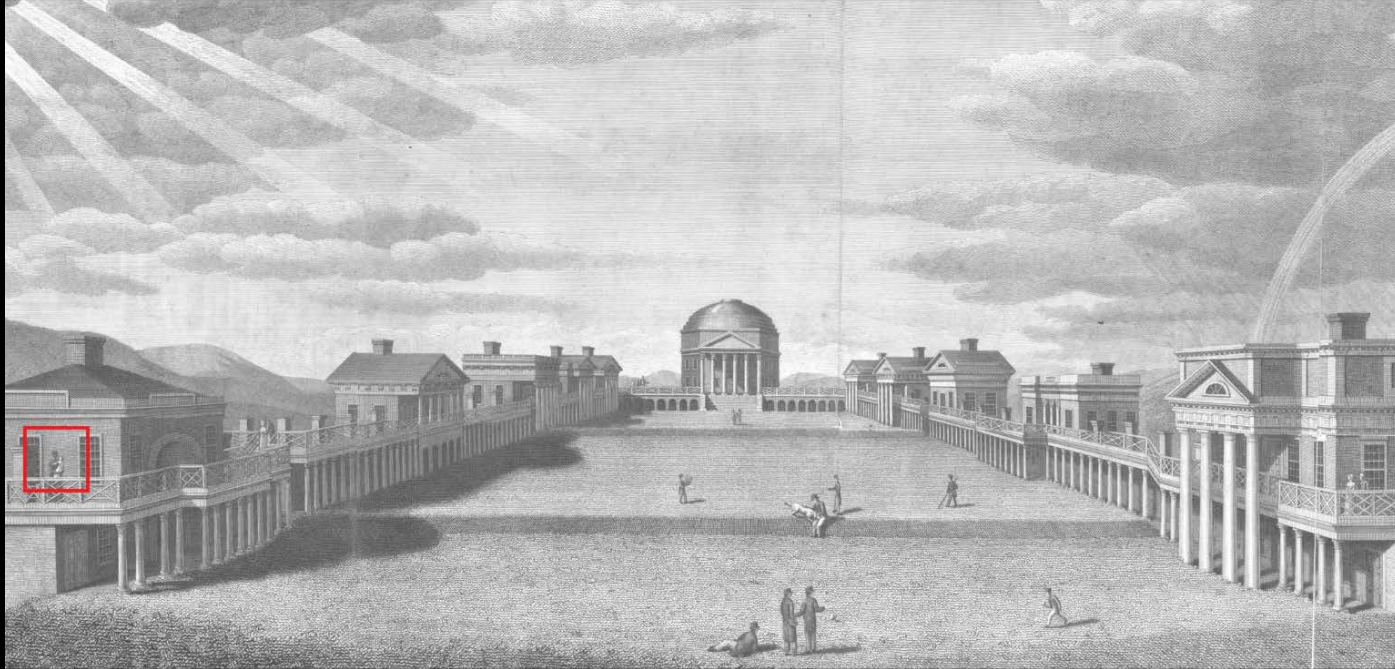
Historian/Critic + Designer



GREGG BLEAM

Landscape Architect

DESIGN TEAM



FOR HERE WE ARE NOT AFRAID TO FOLLOW TRUTH WHEREVER IT MAY LEAD, NOR TO TOLERATE ANY ERROR SO LONG AS REASON IS LEFT FREE TO COMBAT IT .

-THOMAS JEFFERSON, 1820

From the ground to the pavilions to the top of the Rotunda, slaves owned and rented by the university helped build Mr. Jefferson's Academical Village.⁰¹

The spectacular pavilion gardens we now enjoy supplanted – and for a long time silenced – the daily labor of chopping wood and cleaning fowl that once animated these zones.⁰²

~5,000 *enslaved persons worked on grounds between 1817-1865⁰³*

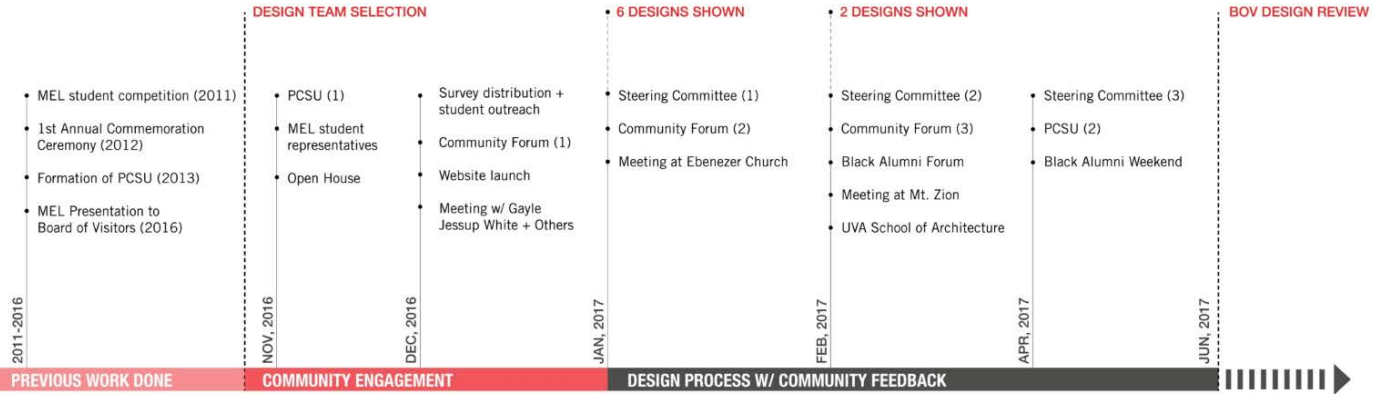
01 - Neale, Catherine. "Slaves, Freedpeople, and the University of Virginia." Undergraduate Thesis, University of Virginia Corcoran Department of History, April 2006.

02 - Louis Nelson, <https://news.virginia.edu/content/course-examines-slave-life-academical-village>

03 - Prof. Ervin Jordan, [Backs and the University of Virginia: an Overview 1819-2015](#), Forthcoming



PROJECT TIMELINE

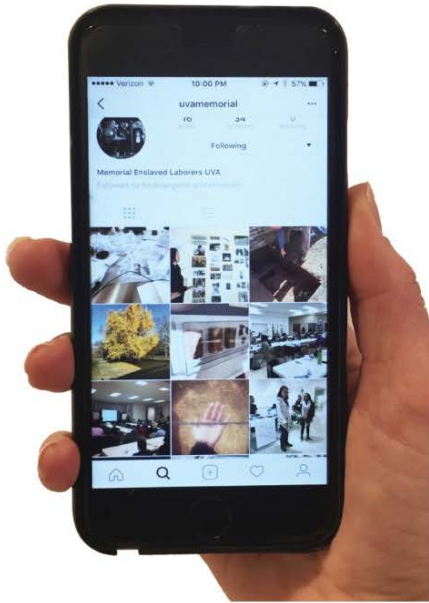


PROJECT TIMELINE

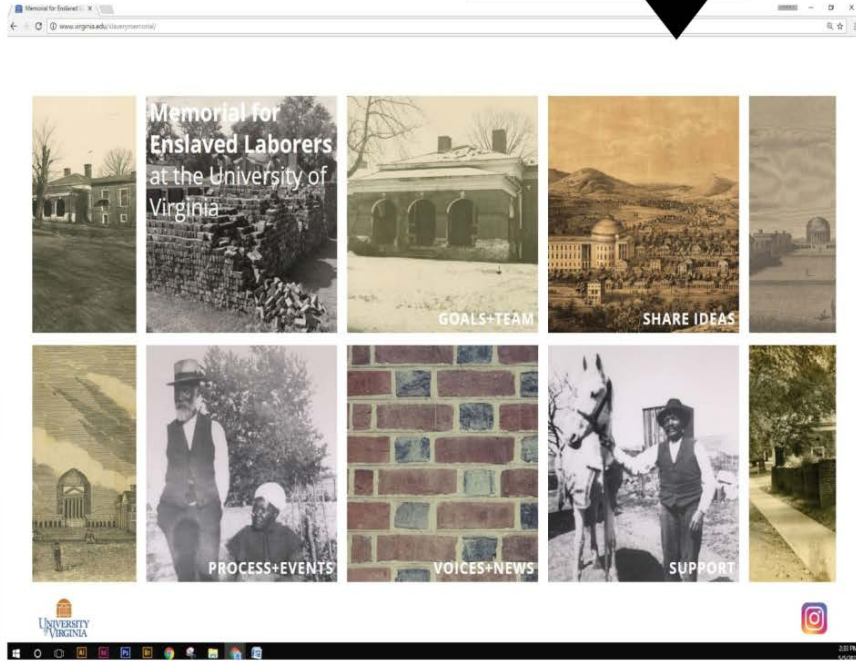


PROJECT TIMELINE

352 ONLINE SURVEY RESPONSES



uvamemorial



www.virginia.edu/slaverymemorial



*AS A BLACK AMERICAN, I FEEL AN INTERNAL PRIDE OF GAZING UPON
EVERY BRICK, EVERY PILLAR, AND EVERY GARDEN AT THE UNIVERSITY AND
KNOWING THAT THIS FRAUGHT PAST HAS BIRTHED AN UNDENIABLY
BEAUTIFUL PRESENT. SO WE MUST FEEL BEAUTY, PRIDE AND GRATITUDE*

- survey response

PROMINENT AND HIGHLY VISIBLE

POWERFUL + EDUCATIONAL EXPERIENCE

EMOTIONAL **EXPERIENCE** THROUGH REPRESENTATION

LIST KNOWN NAMES OF ENSLAVED

FORGE CONNECTION WITH COMMUNITY

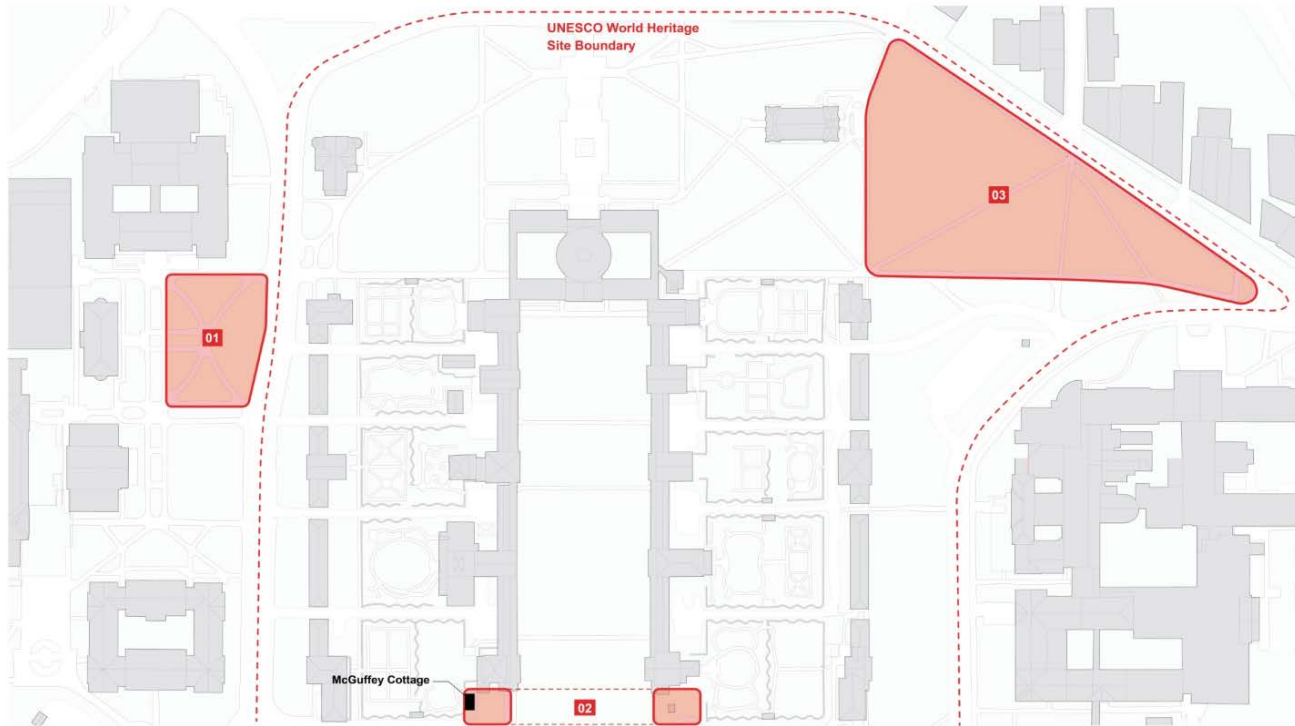
ONGOING MEMORIALIZATION PROCESS

DISTRIBUTED OR MULTIPLE LINKED LOCATIONS

INCORPORATE SOUNDS AND SONGS OF ENSLAVEMENT

SHOW PAIN OF BONDAGE + HOPE FOR FUTURE

EXPRESS **DUALITIES** OF ENSLAVEMENT



01 - ANATOMICAL THEATER

02 - LAWN

03 - TRIANGLE OF GRASS

PROPOSED SITES

A GATHERING SPACE



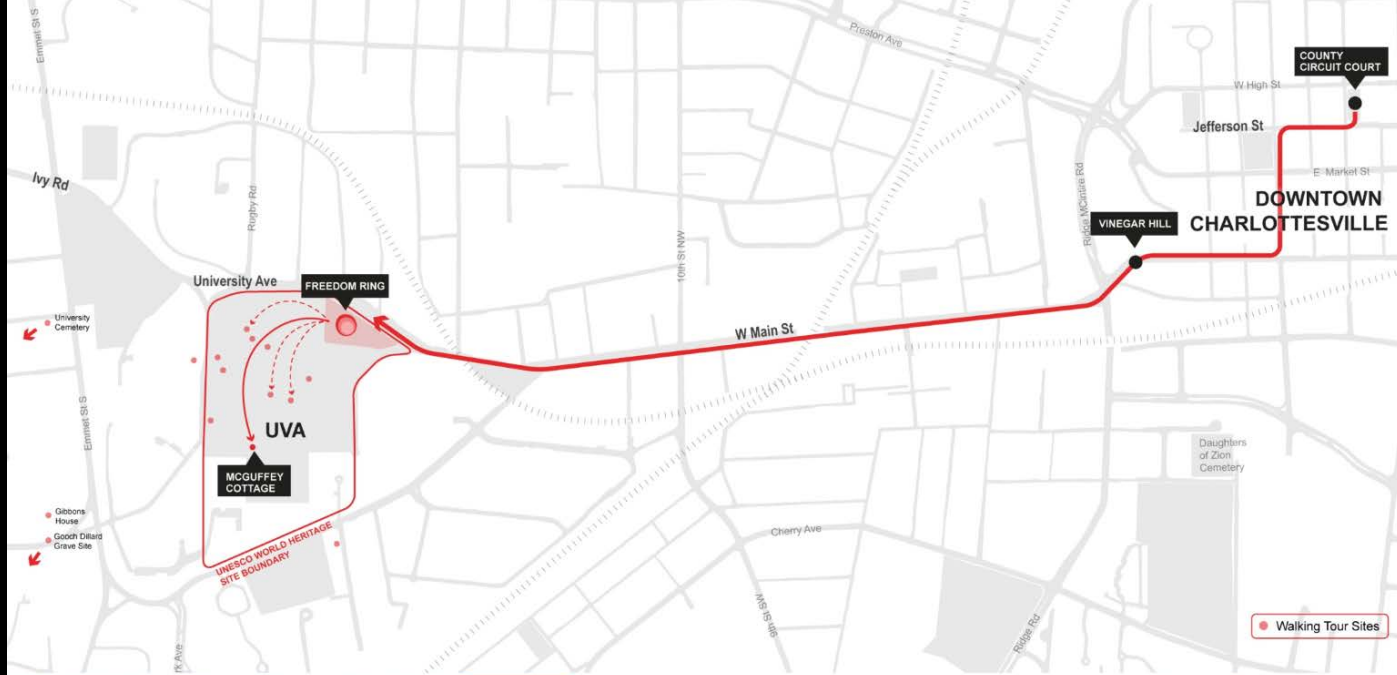
Hush Harbor Drawing



River Baptism, New Bern

A contemplative space honoring the life, labor, and sacrifice of those who suffered in slavery; something that breaks down the metaphoric barriers between the University and community.

-survey response



McGuffey Cottage



UVA Walking Tour Map



Freedom + Liberation Day Walk (March 3rd)

THE MEMORIAL ENGAGES IN + IS PART OF A LARGER CONTEXT



SITE PLAN

EXPRESS DUALITIES



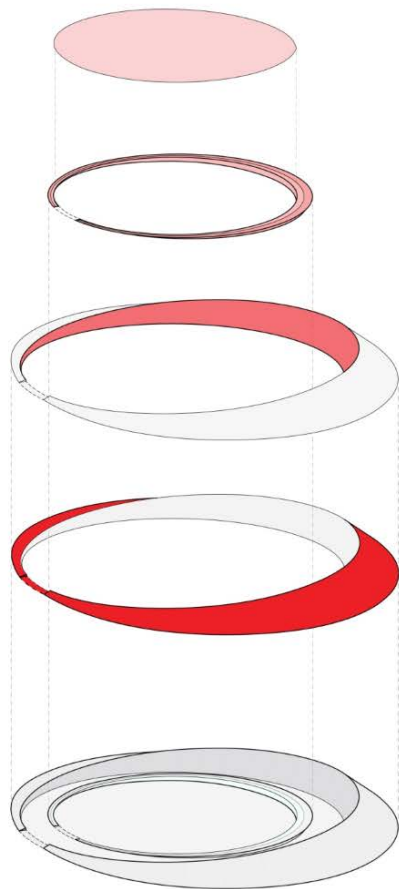
Ring Shout, Muntu, Dance Theatre of Chicago



Slave shackles, ca. 1866

The memorial must evoke the human spirit, show pain, love, life, death...

-survey response



GATHERING

PERFORMANCE + REFLECTION

LIBATION / LIBERATION

SPIRITUAL CONNECTION THROUGH WATER TABLE + TIMELINE

HONORING THE ENSLAVED

INSCRIBED NAMES AND MARKERS FOR UNKNOWN NAMES / PERSONS

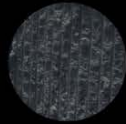
REMEMBERING THE ENSLAVED

REPRESENTATION THROUGH TRANSFORMED PORTRAITS OF THE ENSLAVED



THE TRIANGLE OF GRASS













NEXT STEPS - *Memorial to Enslaved Laborers*

- SCHEMATIC DESIGN APPROVAL

- REFINE DESIGN DETAILS

- BEGIN FUND-RAISING CAMPAIGN

- RESEARCH AND DEVELOP DRAFT TEXT FOR TIMELINE AND LIST OF NAMES

Committee Discussion



Sustainability Report/Update



UVA's Commitment to Sustainability and Responsible Financial Stewardship

The University of Virginia continually strives to be a global leader in sustainability across all aspects of the university – the curriculum, the student experience, research, practices on Grounds and engagement with the local community. Sustainability at UVA is closely connected to the University's Cornerstone Plan, particularly with its emphasis on collaborative decision-making, student leadership, high-impact student experiences, and organizational excellence. Student interest in sustainability at UVA is high with over 30 sustainability-related Contracted Independent Organizations (CIOs) on Grounds. The Sustainability Committee of Student Council actively works to engage these groups, as well as to bring to life its own projects and events.

While there are many strategies to pursue sustainability, including investment in renewable energy initiatives, installation of solar panels on University facilities, conservation initiatives, and divestment; there is also a wide range of opinions on relative efficacy of each respective strategy.

The University has devoted significant thought to developing a responsible and practical approach, which is summarized in this report.

UVA's Five-Year Sustainability Plan

Since UVA's sustainability goals were approved by the University's Board of Visitors in 2011, water usage is down more than 30 percent from an all-time high in 1999; greenhouse gas emissions are 11% below 2009 levels despite significant growth; and building energy use intensity has decreased by 10% since 2010. To date, the University has 44 Leadership in Energy and Environmental Design (LEED) certified buildings, representing over 2.2 million square feet.

Building on the Board's commitment to sustainability, in 2016 UVA unveiled a five-year [Sustainability Plan](#), developed by more than 120 students, faculty, and staff across Grounds, to further advance the University's efforts in this area. In support of the Sustainability Plan, the University has committed additional resources to a number of sustainability-related initiatives and programs. Progress in meeting the Plan's goals and objectives is reported regularly to the Buildings and Grounds Committee of the Board of Visitors. Click [here](#) to access the 2016-2020 Sustainability Plan.

Despite significant growth at the University that has occurred in recent years and is forecasted to continue, the plan includes the following goals:

- Attaining a 25 percent reduction in UVA's carbon footprint by 2025 and reducing building energy use intensity by 20 percent below 2010 levels by 2020.

JUNE • 2017

SUSTAINABILITY UPDATE

ENGAGING OUR COMMUNITIES, STEWARDING RESOURCES, AND DISCOVERING SOLUTIONS FOR A BETTER TOMORROW

Progress on the UVA Sustainability Plan:

ENGAGE



Governor Terry McAuliffe

celebrated UVA's leadership in solar energy with over 200 people at the Earth Week Expo & Clemons Solar Ribbon Cutting.



The 9th annual Earth Week

consisted of 20 events with an estimated 3,000 participants, including UVA Dining's first-ever farmers market.



UVA achieved the first-ever zero waste

men's basketball game in the ACC, diverting 93.4% of waste from landfills at the sold-out UNC game.



\$27,000 of Equity and Environment Funds

provided to eight student projects. Projects include Black President's Council Food Justice Month, Greens to Grounds CIO's produce boxes for Access UVA students, and City Schoolyard Garden student projects.

DISCOVER



\$24,000 in course development grants

were awarded. The Ethics of Food, Water Sustainability, Sustainability Science, and Population, Resources, and Environmental Sustainability.



\$16,000 in research

Tool grants were awarded. Evaluating Bee Hotels as Conservation Tools and Fostering University Collaboration for Sustainable Food Procurement.



The SEAS student Solar Car Team

was awarded \$20,771 from the Jefferson Trust.

For more info: sustainability.virginia.edu



The McIntire Certificate

in Sustainable Business, a 13 week, online program has been developed.



UVA Environmental Sciences'

research and leadership in the Nitrogen Footprint Tool (NFT) Network was featured in an April special issue on institution nitrogen footprints in the academic journal Sustainability: The Journal of Record.

STEWARD



UVA's Greenhouse Gas Action Plan

published in April. UVA has reduced GHG emissions 11% below 2009 levels. Previous calculations have been updated based on revised EPA eGRID emissions factors.



UVA has reduced building energy use intensity by 10% below 2010 levels.



UVA Dining

was accepted to the VA Department of Environmental Quality Environmental Excellence Program at the Exemplary Environmental Enterprise Level and became the first university in Virginia to achieve Green Restaurant certification.



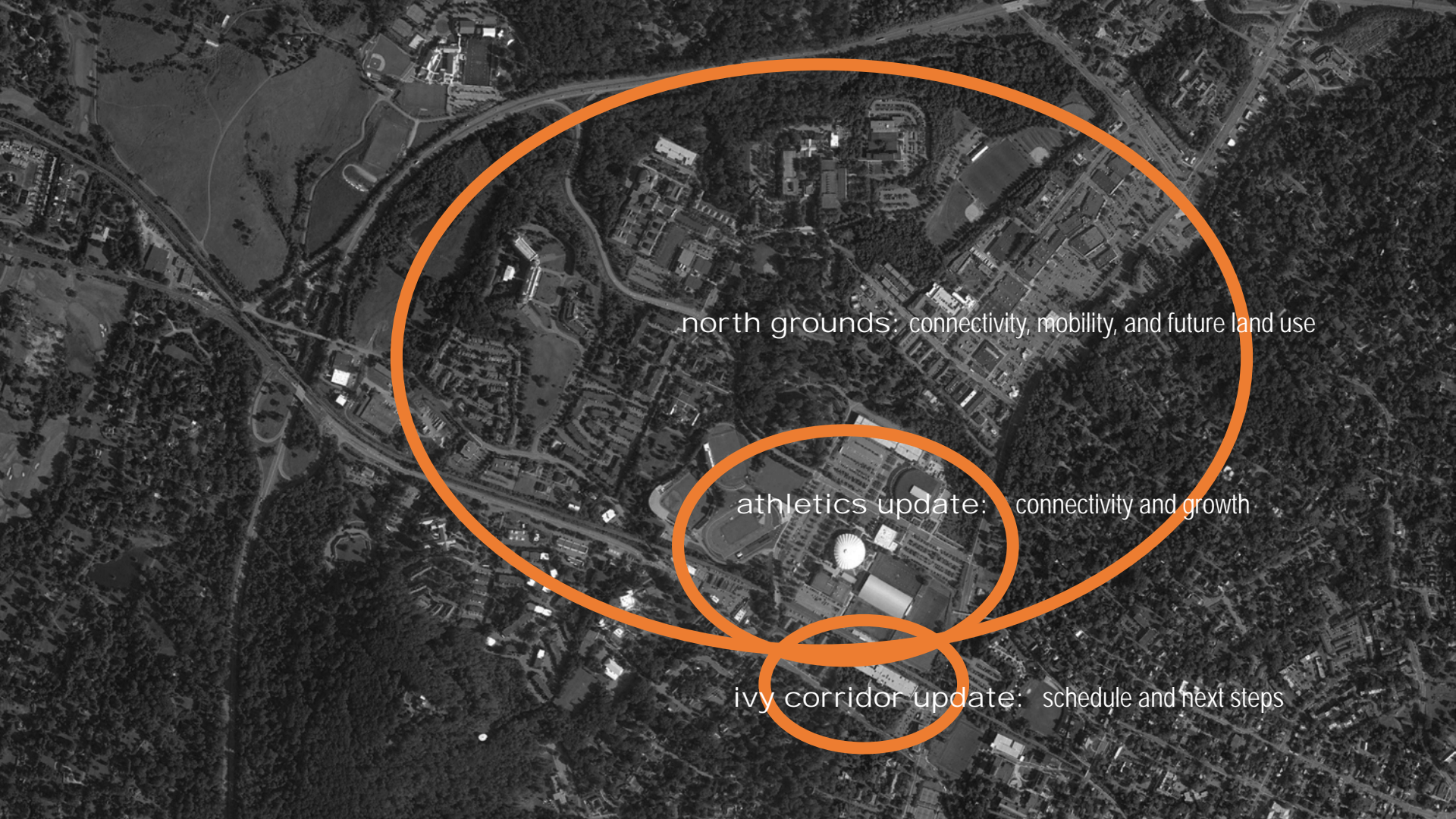
The Dell & Hospital Green Roof

awarded first place *Best Maintained Best Management Practice* and third place *Best Ultra-Urban Best Management Practice* respectively, by The Chesapeake Stormwater Network.

Ivy Corridor Landscape Framework Plan, Phase I North Grounds / Athletics Area Strategic Planning



2017 Aerial Photo



north grounds: connectivity, mobility, and future land use

athletics update: connectivity and growth

ivy corridor update: schedule and next steps

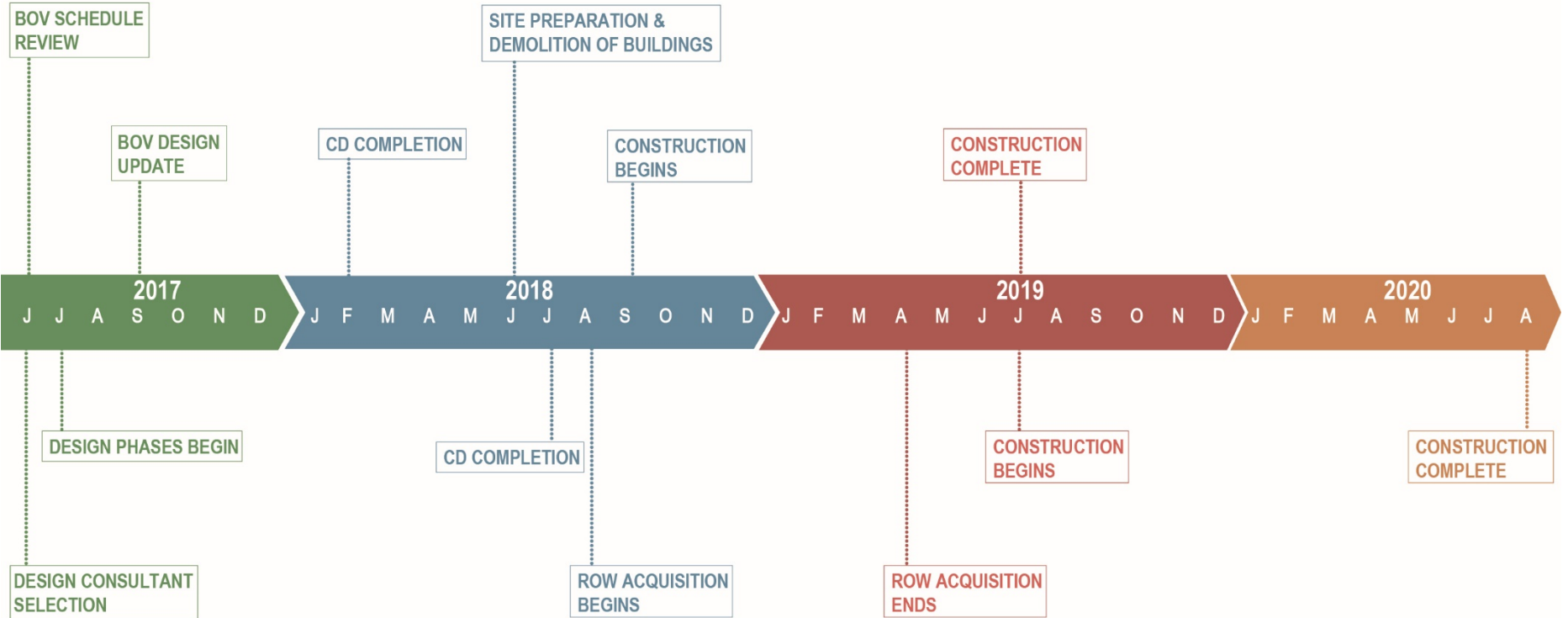


ivy corridor update: schedule and next steps

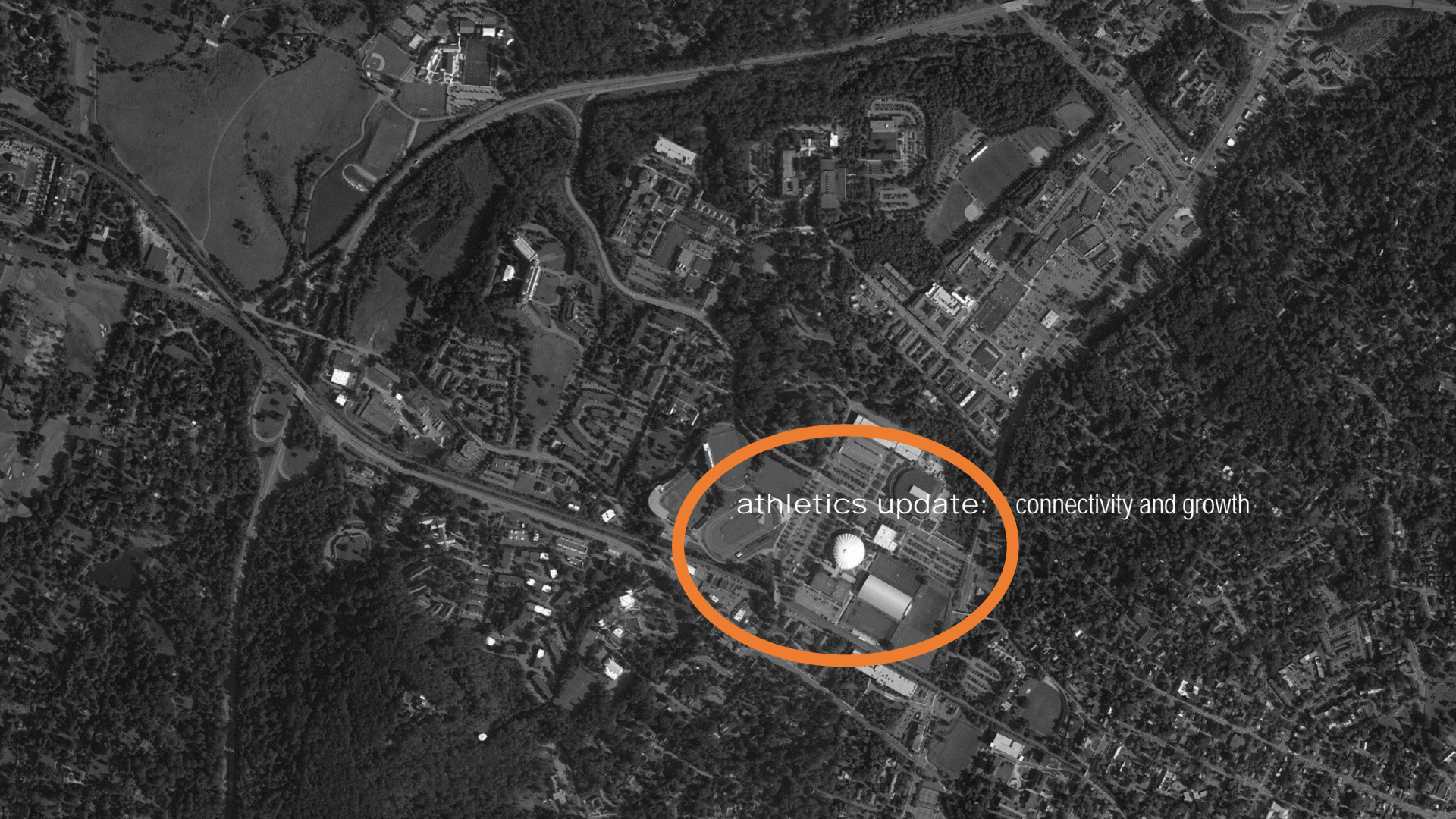
Updates since September meeting:

- Development of streetscape improvements along Ivy and Emmet
 - Widening sidewalks, tree lawns, street lamps, stair access to IRC
 - Dedicated bicycle lanes
 - Shared use path through railroad trestle and north along Emmet Street
- Design of central green space/storm water management
- Design of undergrounding of utilities and extension of UVA service to the site
- Coordination of work with the City for SmartScale improvements

UVA IVY CORRIDOR PHASE 1 TIMELINE



CHARLOTTESVILLE SMART SCALE / EMMET STREET TIMELINE



athletics update: connectivity and growth



COPELEY III & IV

CHILD DEV. CENTER

FAULKNER COMPLEX

COPELEY I & II

JOHN PAUL JONES ARENA

UNIVERSITY GARDENS

MILLER CENTER

KLOCKNER STADIUM

MCCUE CENTER

UNIVERSITY HALL

GOODWIN BRIDGE

DAVENPORT FIELD

LANNIGAN FIELD

ONESTY HALL

THE CAGE

WELSH INDOOR PRACTICE

LAMBETH FIELD RESIDENCES

IVY CORRIDOR

ATHLETICS AREA EXISTING CONDITIONS



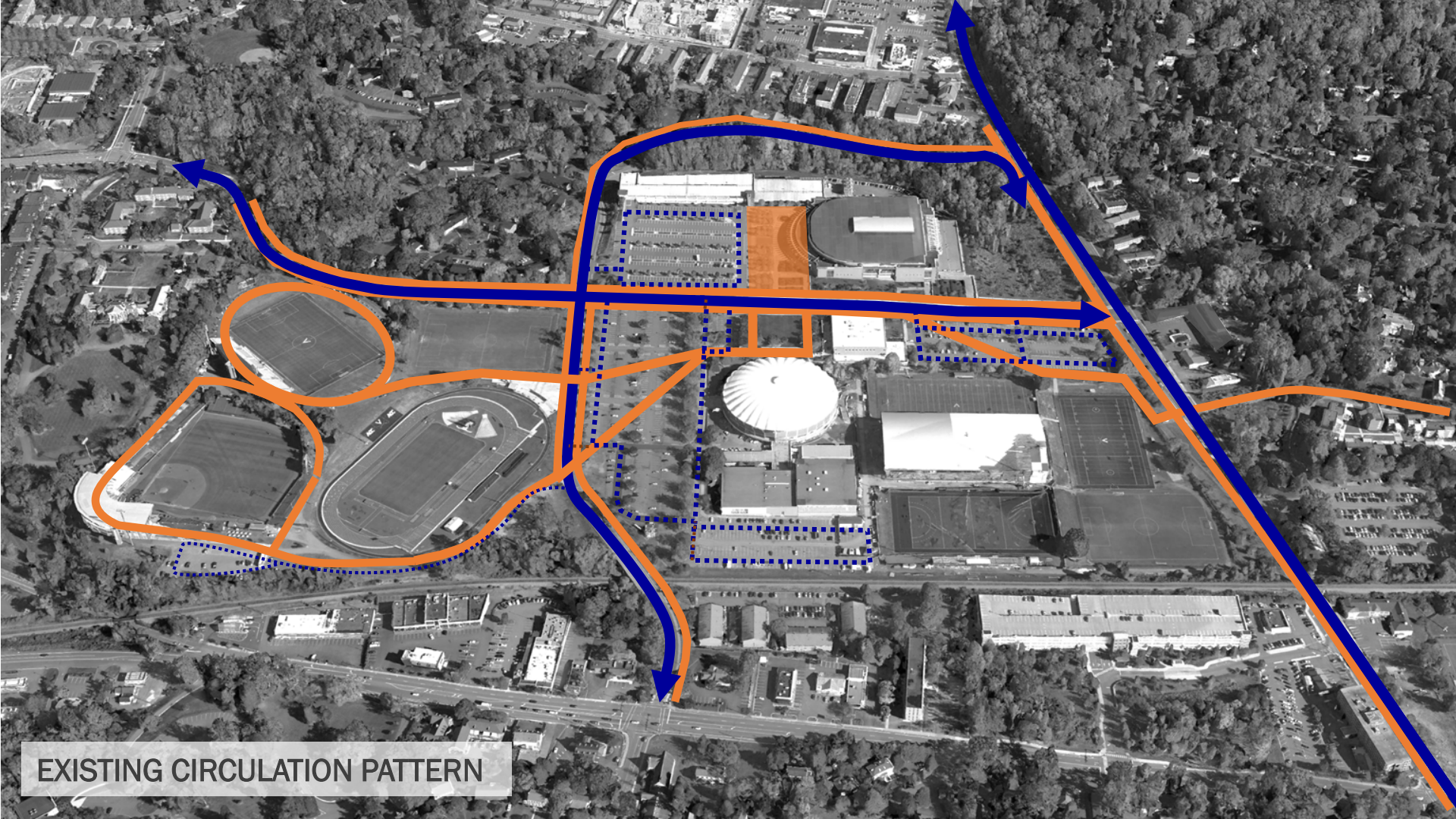
MASSIE ROAD

COPELEY ROAD

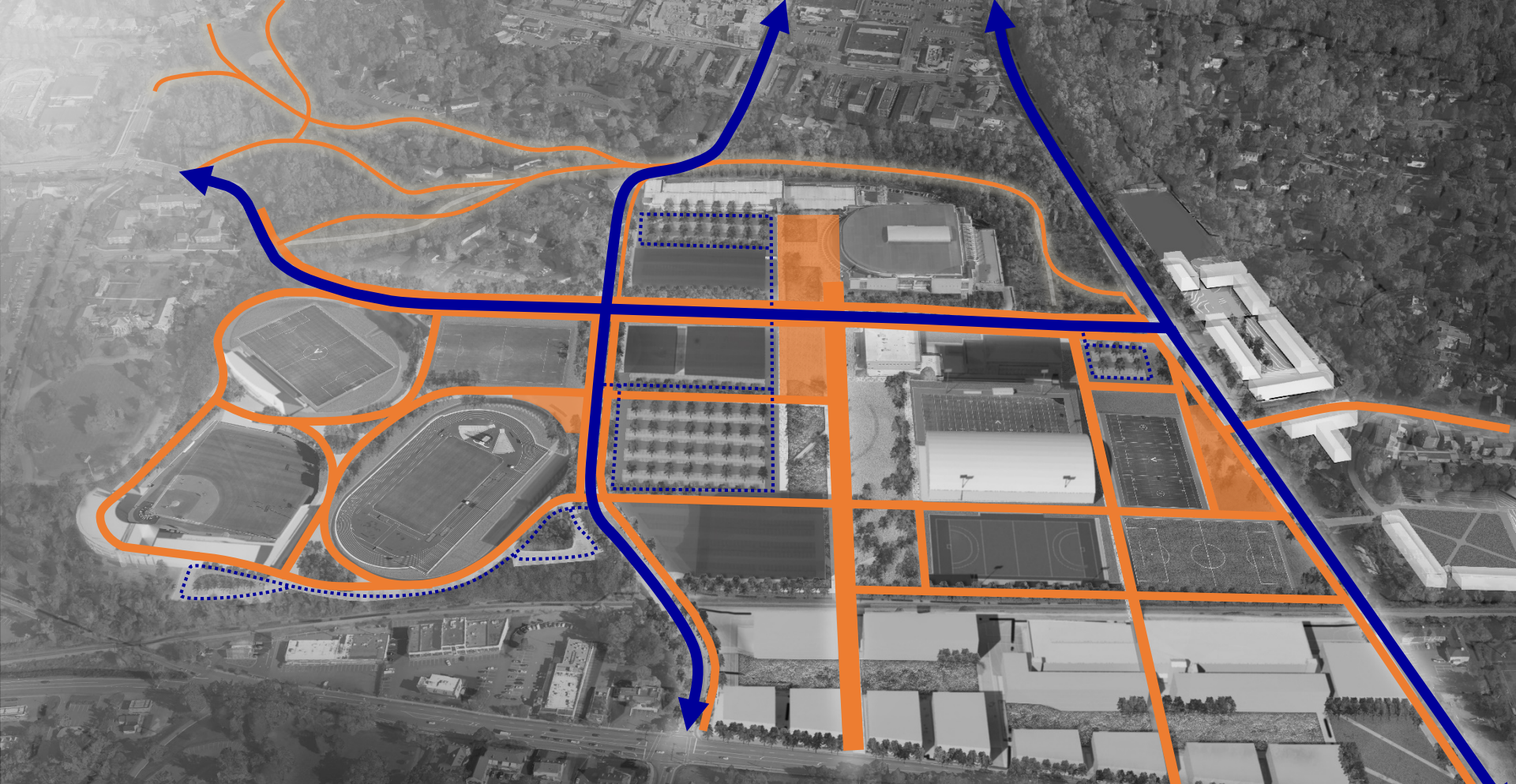
EMMET STREET

IVY ROAD

ATHLETICS STUDY AREA



EXISTING CIRCULATION PATTERN



ATHLETICS DISTRICT PROPOSED CIRCULATION SYSTEM



EXISTING VIEW ALONG MASSIE ROAD
- LOOKING WEST



PROPOSED VIEW ALONG MASSIE ROAD
- LOOKING WEST



EXISTING VIEW AT UNIVERSITY HALL AND McCUE CENTER
- LOOKING NORTH



PROPOSED VIEW AT UNIVERSITY HALL AND McCUE CENTER
- LOOKING NORTH



EXISTING VIEW ON GOODWIN BRIDGE
- APPROACH TO NORTH GROUNDS



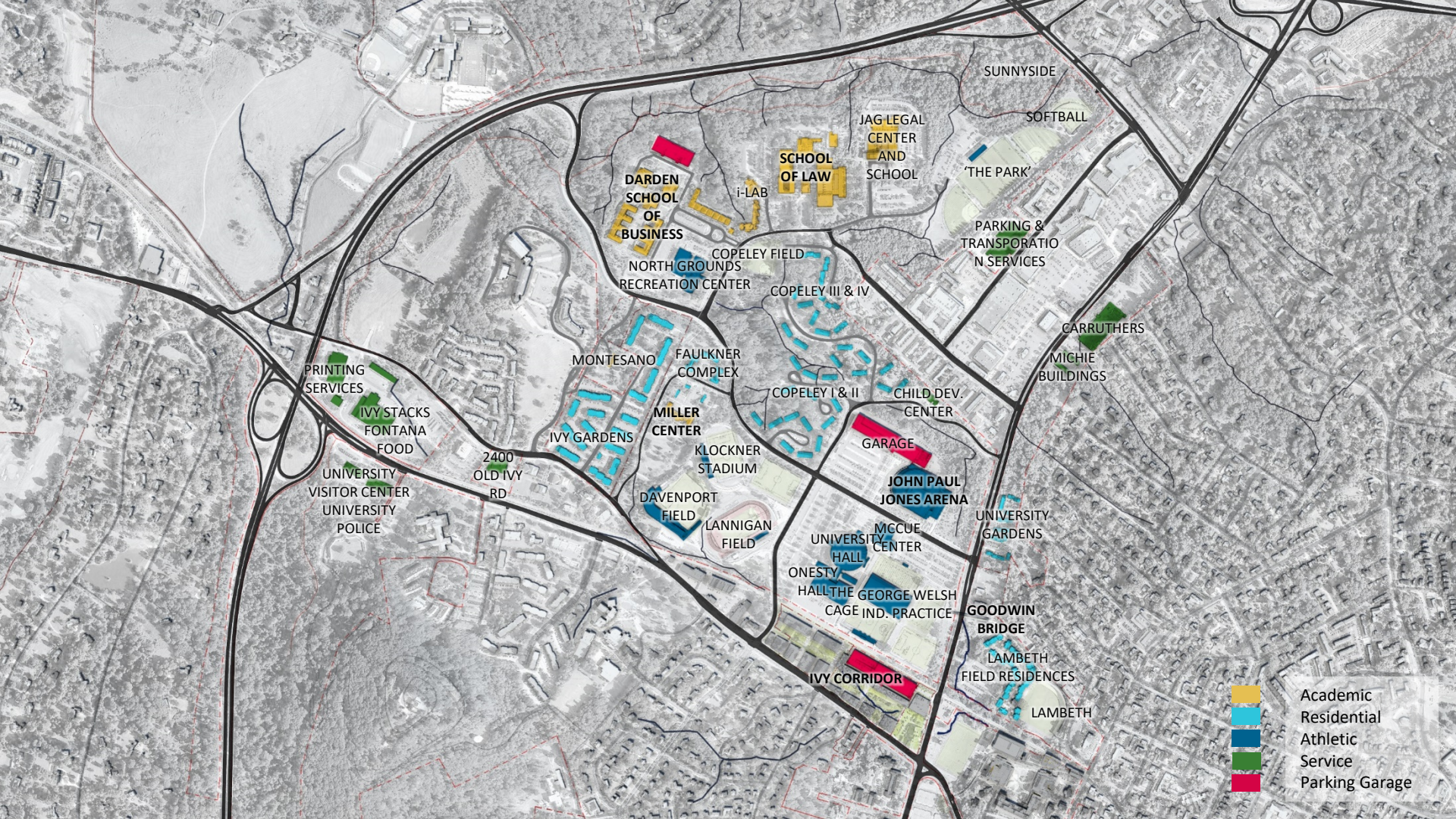
EXISTING VIEW AT GOODWIN BRIDGE
- AT NORTH GROUNDS



PROPOSED VIEW OF PLAZA AT GOODWIN BRIDGE
- AT NORTH GROUNDS



north grounds: connectivity, mobility, and future land use



PRINTING SERVICES

IVY STACKS
FONTANA
FOOD

UNIVERSITY
VISITOR CENTER
UNIVERSITY
POLICE

2400
OLD IVY
RD

IVY GARDENS

MONTESANO

FAULKNER
COMPLEX

MILLER
CENTER

DAVENPORT
FIELD

LANNIGAN
FIELD

DARDEN
SCHOOL
OF
BUSINESS

COPELEY FIELD
NORTH GROUNDS
RECREATION CENTER

i-LAB

COPELEY III & IV

COPELEY I & II

KLOCKNER
STADIUM

UNIVERSITY
HALL

ONESTY
HALL

THE GEORGE WELSH
CAGE IND. PRACTICE

IVY CORRIDOR

SCHOOL
OF LAW

JAG LEGAL
CENTER
AND
SCHOOL

COPELEY III & IV

CHILD DEV.
CENTER

GARAGE

JOHN PAUL
JONES ARENA

MCCUE
CENTER

ONESTY
HALL

THE GEORGE WELSH
CAGE IND. PRACTICE

GOODWIN
BRIDGE

LAMBETH
FIELD RESIDENCES

SOFTBALL

'THE PARK'

PARKING &
TRANSPORATIO
N SERVICES

CARRUTHERS

MICHIE
BUILDINGS

UNIVERSITY
GARDENS

LAMBETH
FIELD RESIDENCES

LAMBETH

SUNNYSIDE

- Academic
- Residential
- Athletic
- Service
- Parking Garage

DECEMBER 1959



Rt 29
clearing

MONTESANO
FAULKNER
HOUSE
+600

COPELEY HILL
+510

+620

+510

+470

+500

+605

+575

+605

+600

+560

+580

+570

+580

+562

+554

+480

+495

+470

+490

+510

+560

+525

MARCH 1964

Copeley Residential
clearing

Beginning
U-Hall



MARCH 1968

**Copeley
complete**

**U-Hall and
parking
surround**

Cavalier inn



MARCH 1977



Darden,
Law
School,
and JAG

Copeley
complete

Ivy Gardens
expansion

parking
expansion

MAY 1994

Darden
beginning

The Park
beginning

Faulkner
residential



OCTOBER 2016



Darden

Law

JAG

Varsity
Softball

The Park

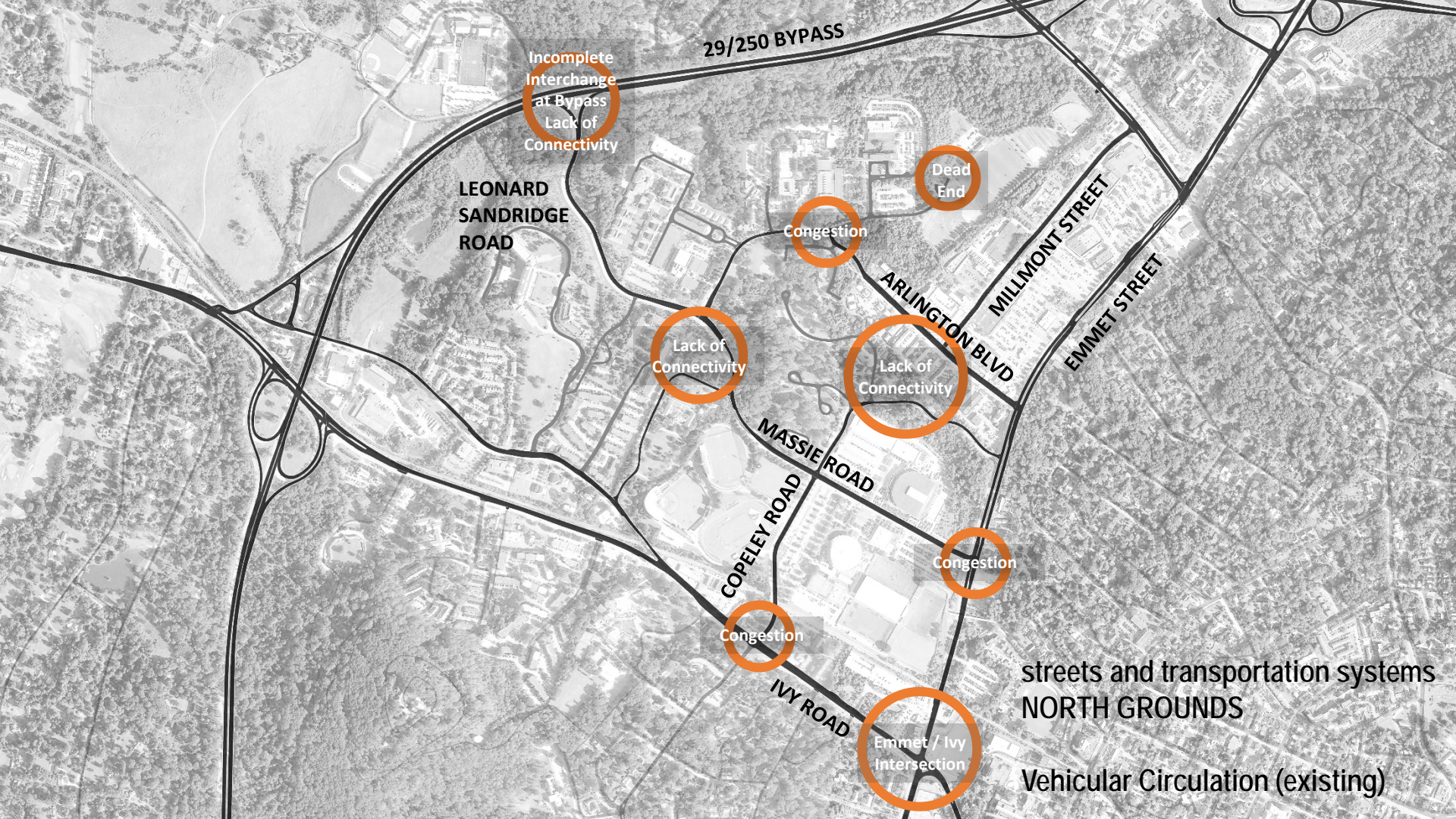
IM Rec.

Center
for
Politics

Miller
Center

Copeley
Hill

Ivy
Gardens



29/250 BYPASS

Incomplete Interchange at Bypass
Lack of Connectivity

LEONARD SANDRIDGE ROAD

Dead End

Congestion

Lack of Connectivity

Lack of Connectivity

ARRLINGTON BLVD

MILLMONT STREET

EMMET STREET

MASSIE ROAD

COPELEY ROAD

Congestion

Congestion

IVY ROAD

Emmet / Ivy Intersection

streets and transportation systems
NORTH GROUNDS

Vehicular Circulation (existing)

Cars per hour based on PM peak

29/250 BYPASS

+70
LEONARD SANDRIDGE ROAD
+295

+139
-172

ARLINGTON BLVD
+48

MILLMONT STREET
EMMET STREET

+136
-122
MASSIE ROAD

+156
-249
-31
COPELEY ROAD
IVY ROAD

-24
-134

Observations:

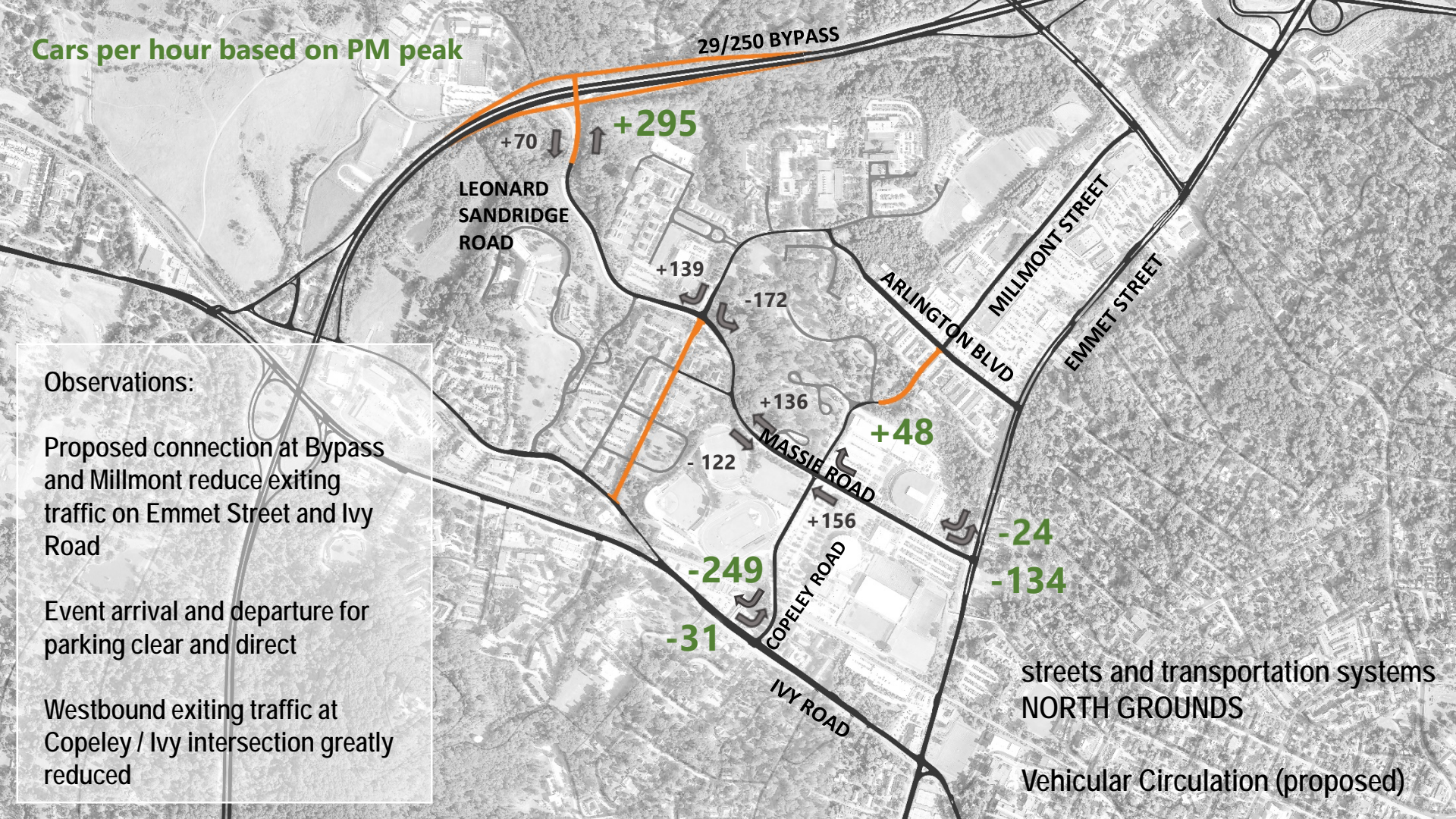
Proposed connection at Bypass and Millmont reduce exiting traffic on Emmet Street and Ivy Road

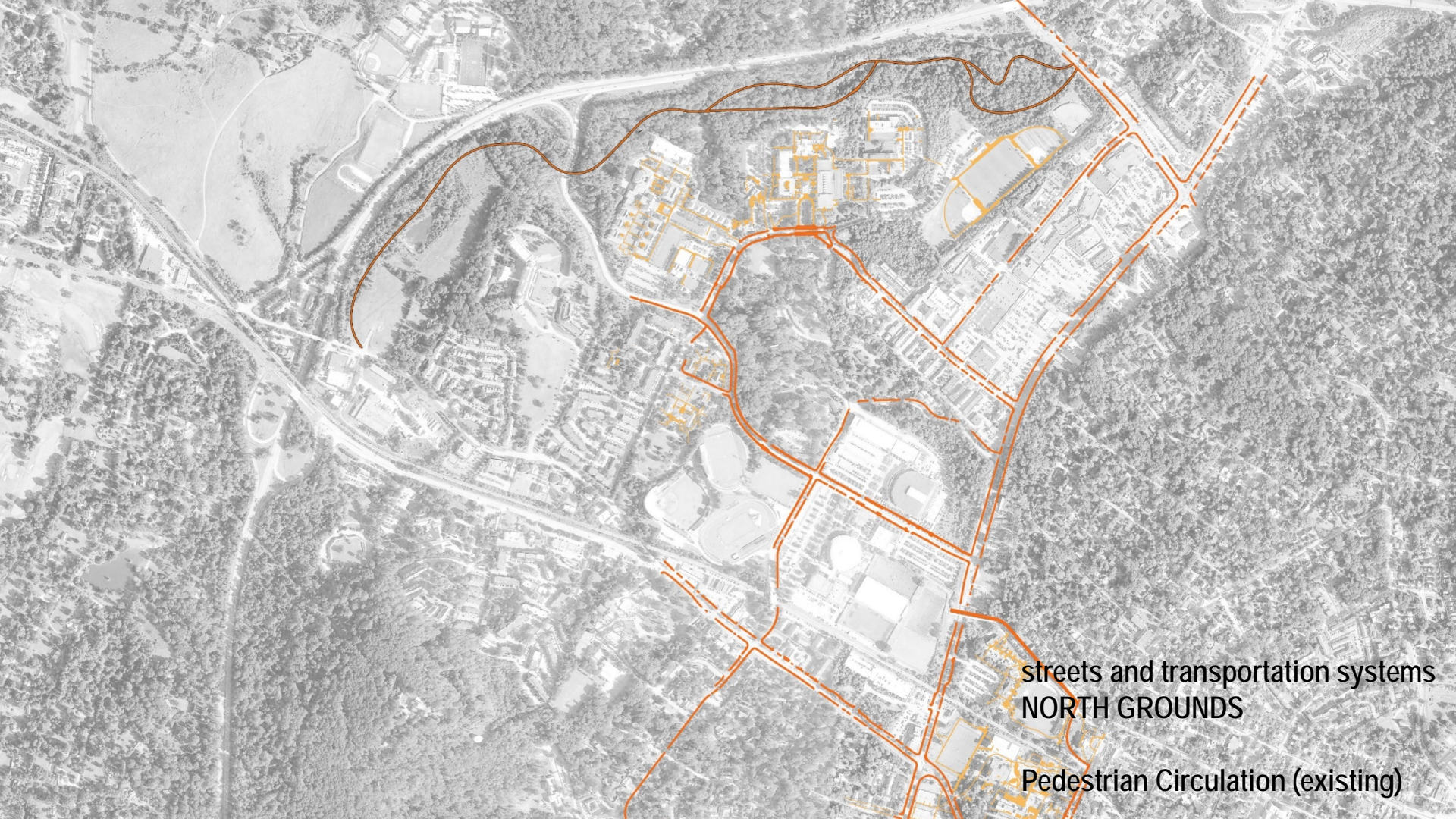
Event arrival and departure for parking clear and direct

Westbound exiting traffic at Copeley / Ivy intersection greatly reduced

streets and transportation systems
NORTH GROUNDS

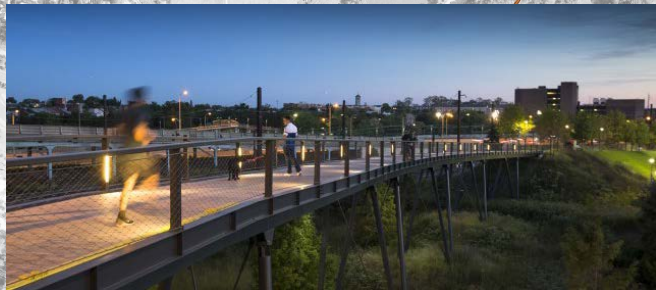
Vehicular Circulation (proposed)





streets and transportation systems
NORTH GROUNDS

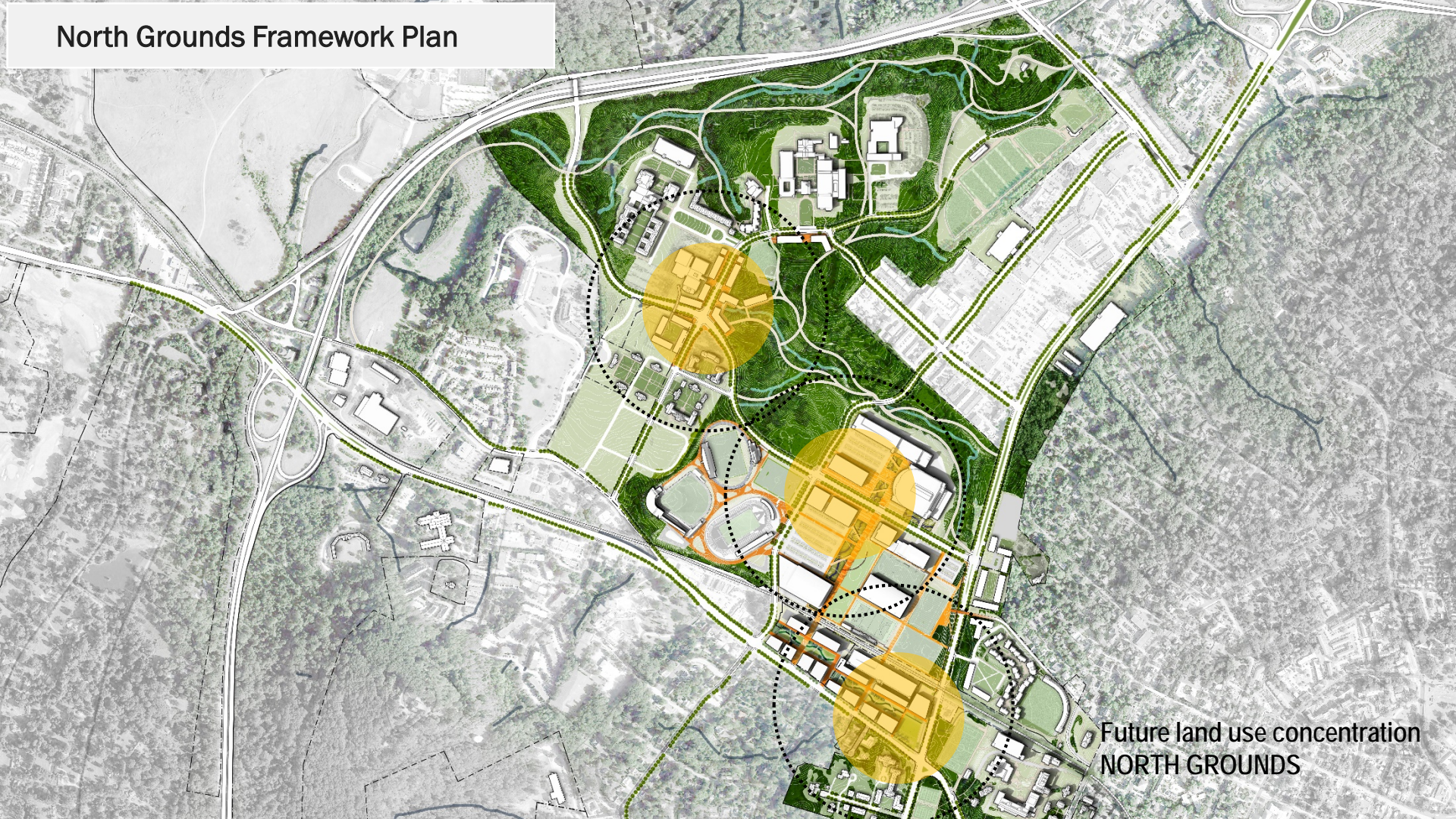
Pedestrian Circulation (existing)



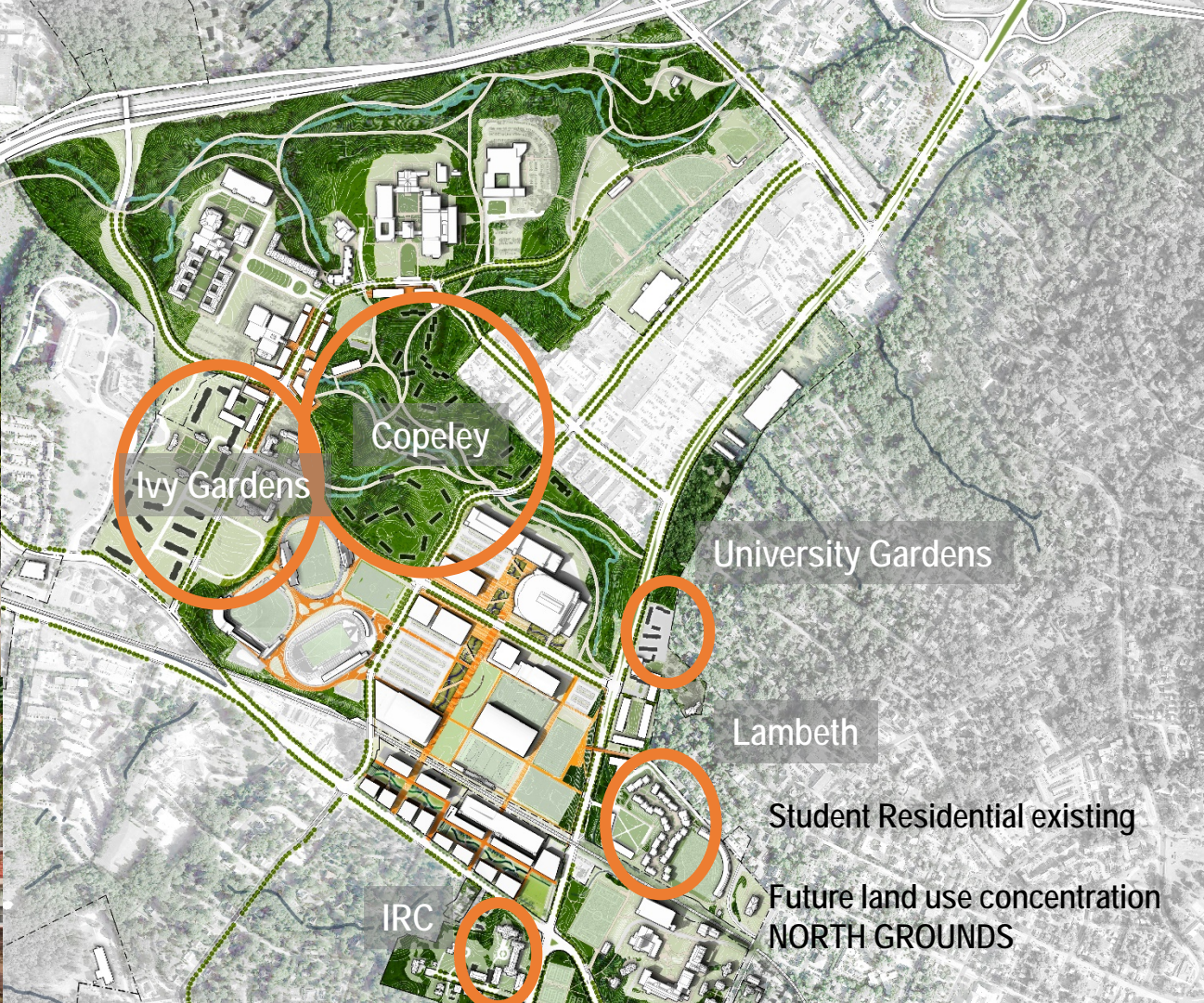
streets and transportation systems
NORTH GROUNDS

Pedestrian Circulation (proposed)

North Grounds Framework Plan



Future land use concentration
NORTH GROUNDS





Massie Rd / Leonard Sandridge Rd
Graduate residential, centers, mixed use

Goodwin Bridge / Lambeth
Undergraduate residential and
mixed use

IRC / Ivy Corridor
Undergraduate residential
and mixed use

Student Residential potential
Future land use concentration
NORTH GROUNDS



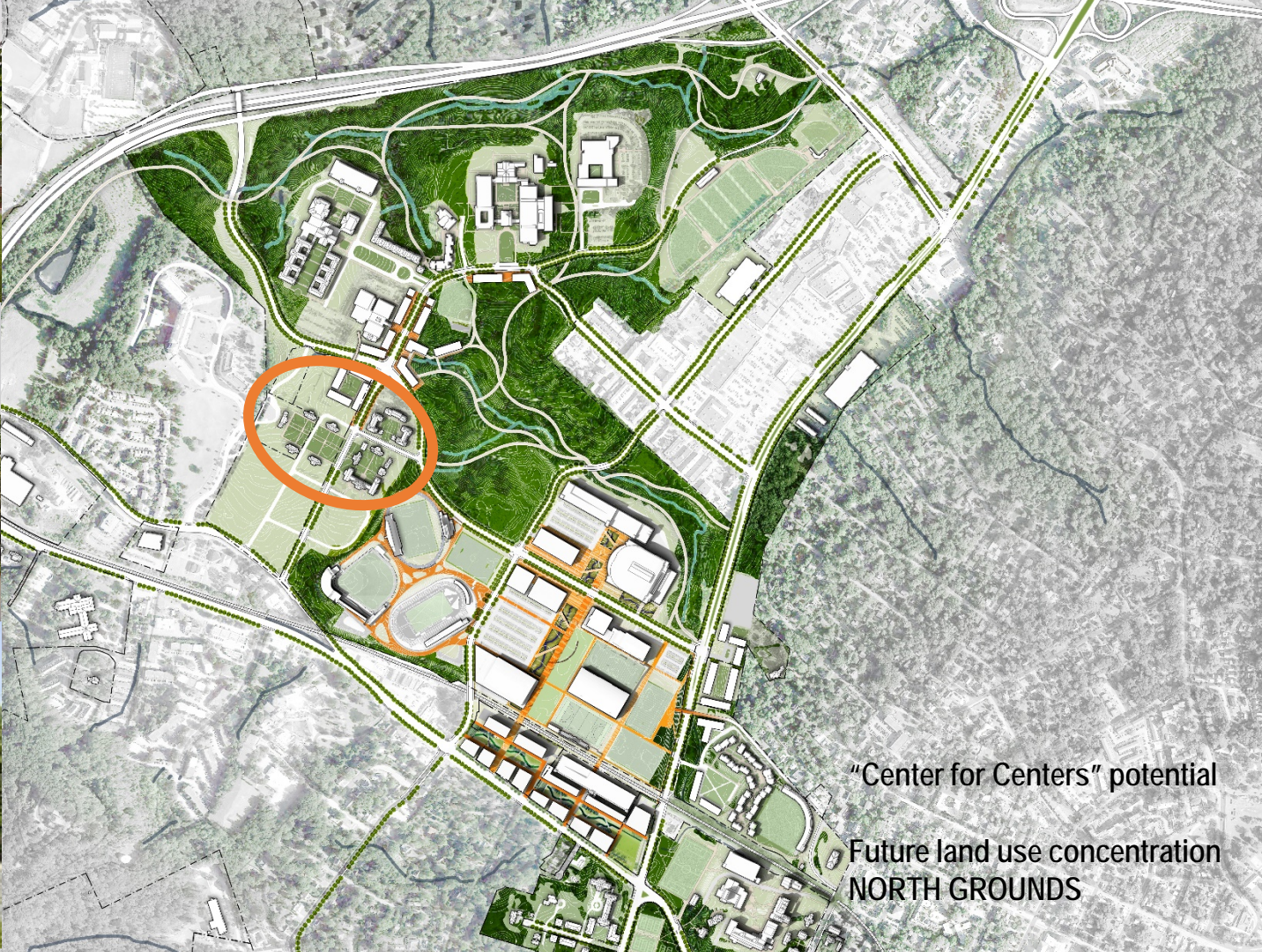
Center for Politics
Montesano



Miller Center



Sorensen Institute
Weldon Cooper Center



"Center for Centers" potential
Future land use concentration
NORTH GROUNDS



NORTH GROUNDS Framework Plan

Next Steps:

Complete master plan for Athletics area

Detailed study of pedestrian connectivity enhancements from Central Grounds through North Grounds

Feasibility study of improved vehicular connectivity:

- complete the interchange at Leonard Sandridge Road and the 29/250 Bypass
- extend Copeley Road to Millmont Street
- establish a four-way intersection at Massie Road and Leonard Sandridge Road

Residential Life feasibility study to:

- replace aging Copeley and University Gardens with undergraduate housing closer to Central Grounds
- replace aging Ivy Gardens with graduate housing closer to Darden and Law

“Center for Centers” feasibility study

