

Provost's ACADEMIC DASHBOARD

PREVIEW: JUNE 2017

QUALITY
OF THE
FACULTY

PAGE 1

56%

OF STUDENTS RAISE THEIR
PERFORMANCE DUE TO
FACULTY HIGH STANDARDS

QUALITY
OF THE
STUDENTS

PAGE 4

1346

AVERAGE SAT SCORE

QUALITY
OF THE
STUDENT
EXPERIENCE

PAGE 5

95%

6 YEAR
GRADUATION
RATE

\$338M

IN NEW RESEARCH AWARDS

FACULTY
DIVERSITY

15%

TOTAL MINORITY



YIELD

38%

FALL 2016

GLOBAL EXPERIENCES



37%

UNDERGRADUATE PARTICIPATION
IN STUDY ABROAD



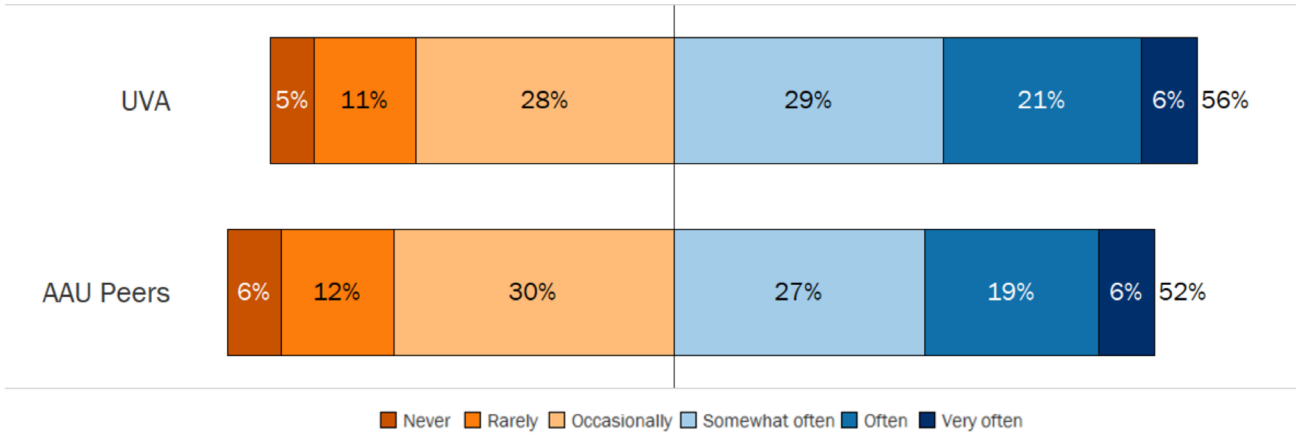
26,081

STUDENTS PARTICIPATED
IN THE ARTS IN 2016



Teaching Excellence

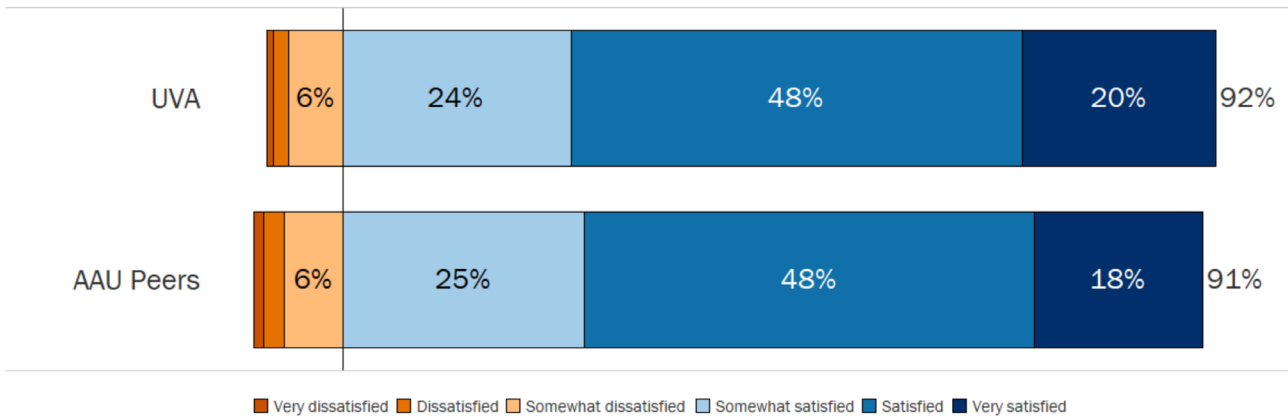
How frequently during this academic year have you raised your standard for acceptable effort due to the high standards of a faculty member?



Source: Student Experience in the Research University (SERU) Survey: 2015
AAU Peers: University of Florida, University of Pittsburgh, University of Minnesota, University of North Carolina, Texas A&M, University of Southern California

Teaching Excellence

How satisfied are you with the quality of faculty instruction?

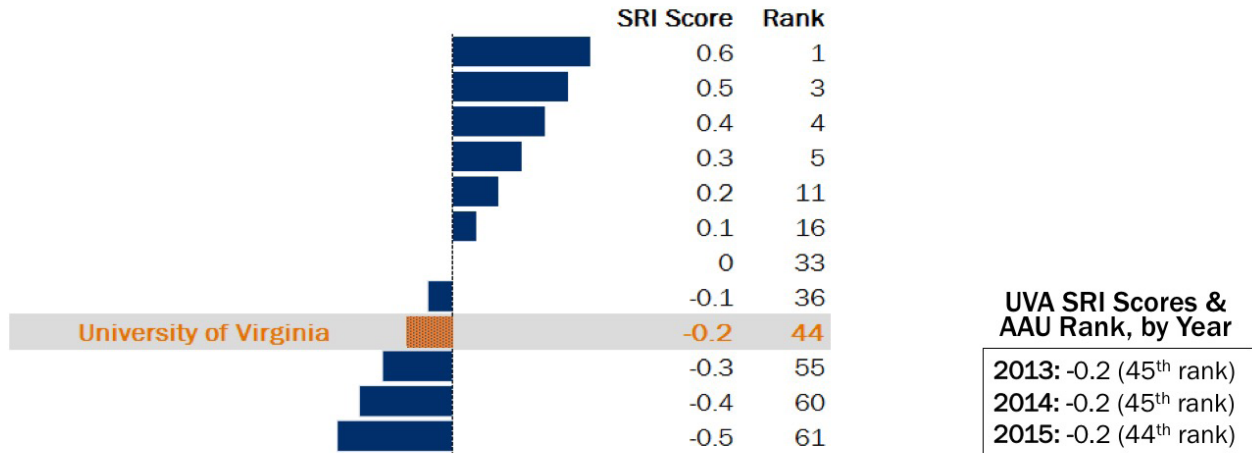


Source: Student Experience in the Research University (SERU) Survey: 2015
AAU Peers: University of Florida, University of Pittsburgh, University of Minnesota, University of North Carolina, Texas A&M, University of Southern California



Scholarly Productivity

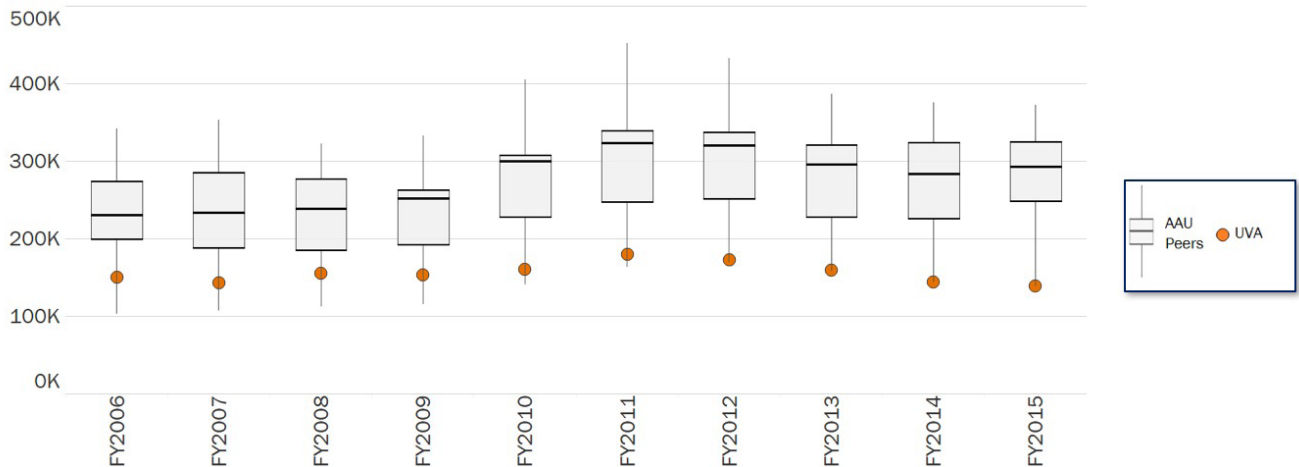
2015 AAU Scholarly Research Index (SRI) Scores



Source: Academic Analytics

Research Funding

Federal Research Expenditures per Faculty Member, by Fiscal Year



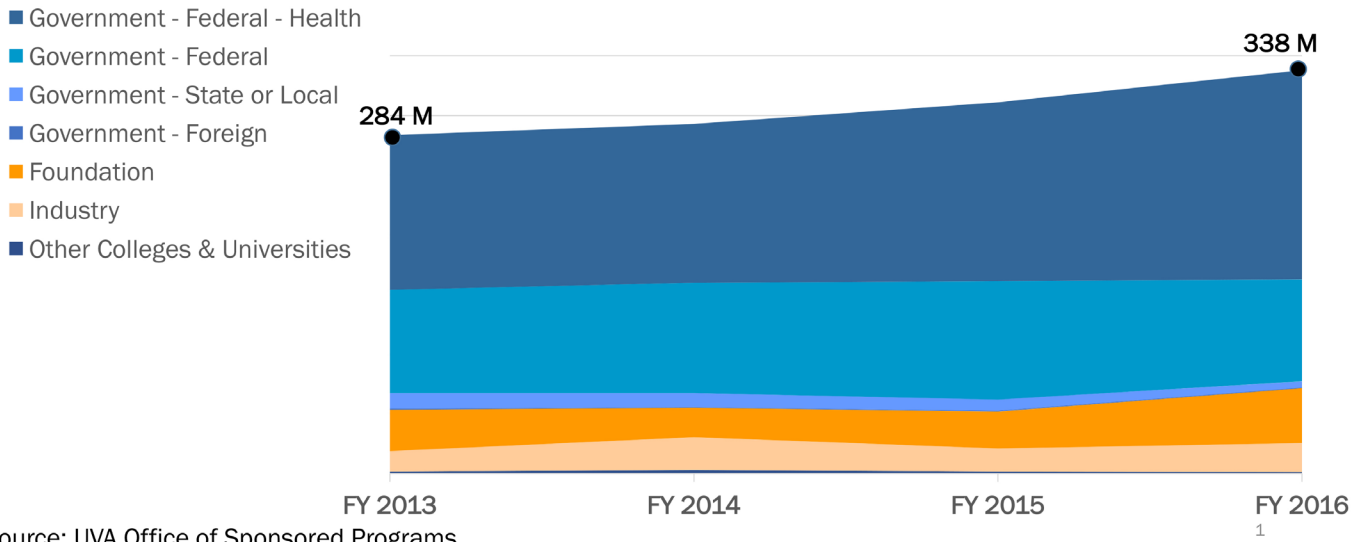
Source: NSF HERD Survey

Select AAU Peers: University of Michigan, Penn, UCLA, Duke, University of North Carolina, Cornell, Vanderbilt, Berkeley, Washington University in St. Louis, Northwestern, Emory, University of Maryland, New York University



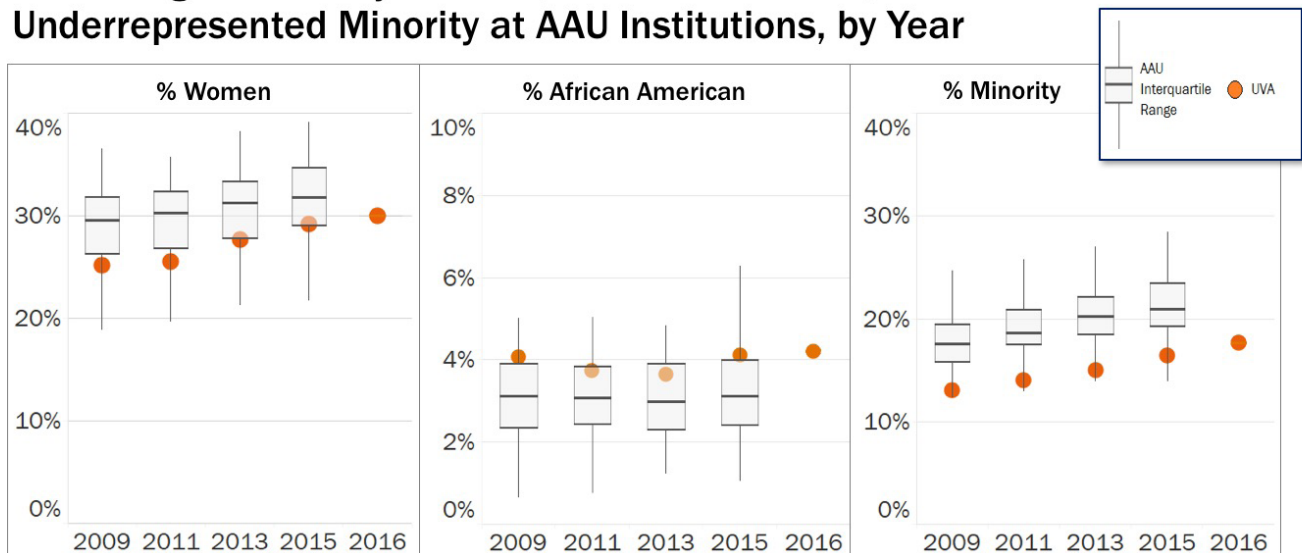
Research Funding

Award Dollars by Broad Fund Source Category, FY 2013- FY 2016



Faculty Diversity

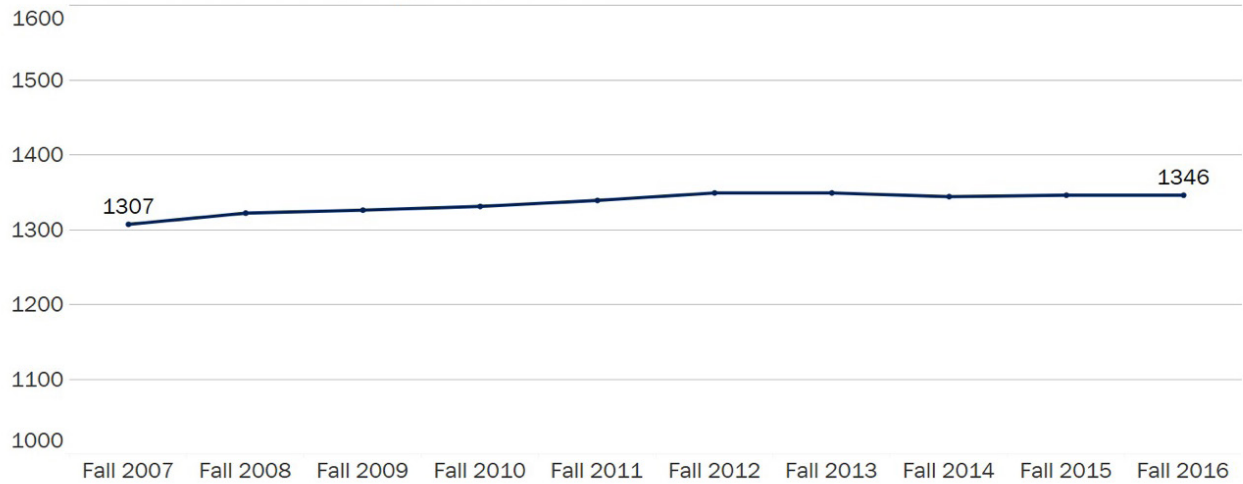
Percentage of Faculty Women, African American, and Underrepresented Minority at AAU Institutions, by Year





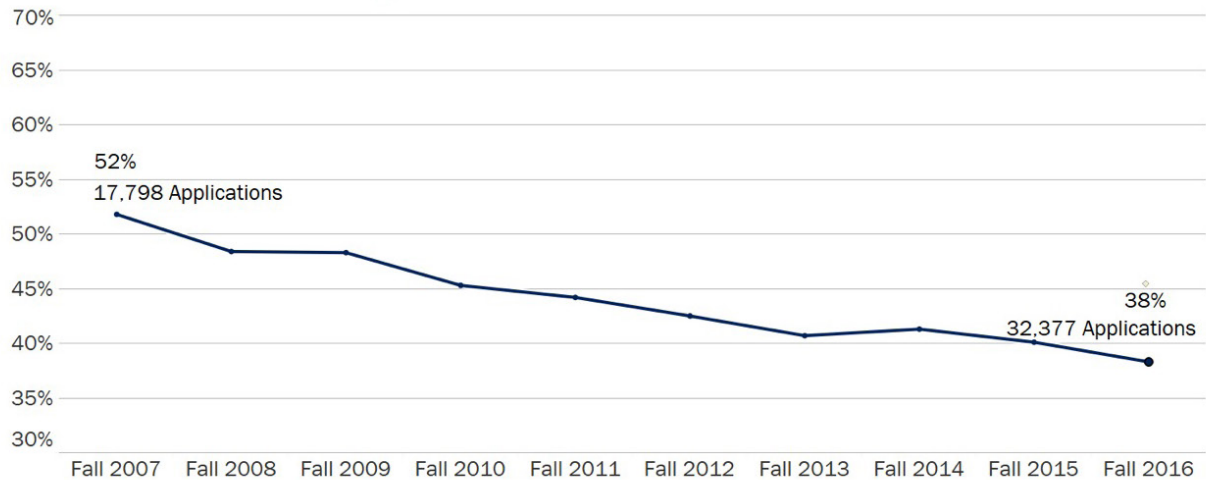
Average SAT Score

Math + Verbal, Maximum Score = 1600
First-Time First-Year Students Entering Fall 2007-Fall 2016



Matriculation Rate

Accepted Offers Divided by Offers Made
First-Time First-Year Students Entering Fall 2007-Fall 2016

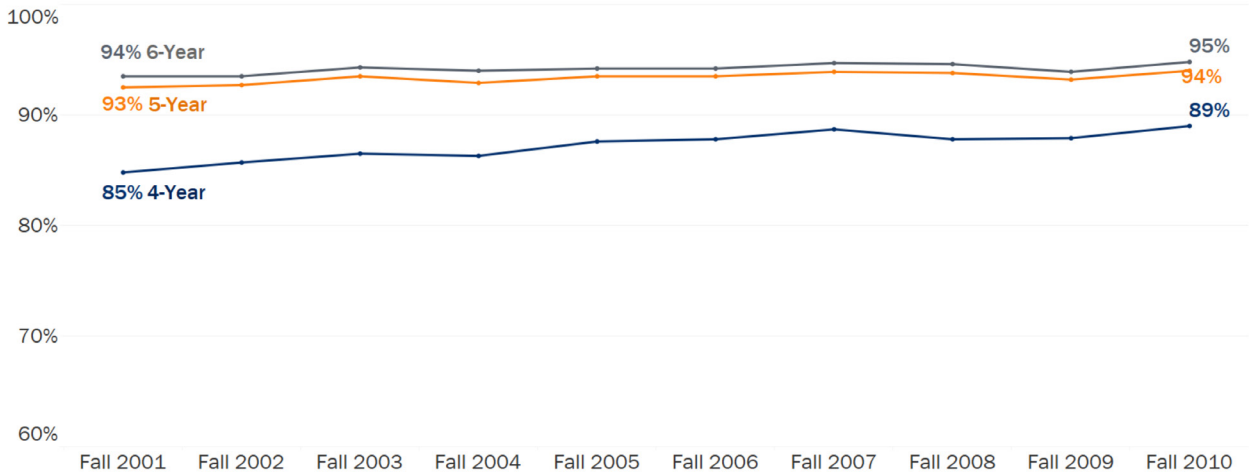




Graduation Rate

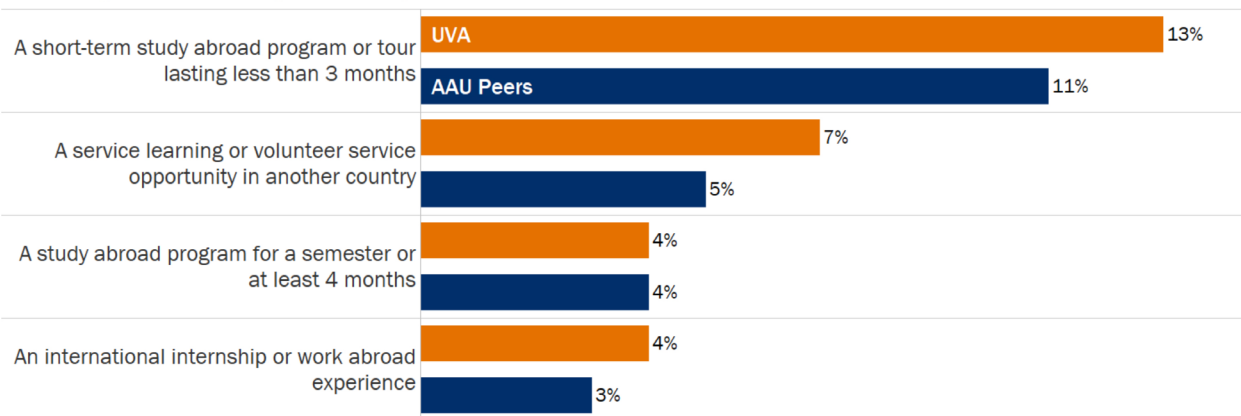
4-, 5-, and 6-Year Graduation Rates

First-Time First-Year Students Entering Fall 2001-Fall 2010



Students: Global Experiences

While a student at this university, have you completed or are you now participating in any of the following internationally-based experiences?



Source: Student Experience in the Research University (SERU) Survey: 2015

AAU Peers: University of Florida, University of Pittsburgh, University of Minnesota, University of North Carolina, Texas A&M, University of Southern California

Students: The Arts 2016 Student Involvement in the Arts

- **26,081** Students attending Arts Events
- **10,022** Students actively participating in the Arts