

Meeting of the

*Academic &  
Student Life  
Committee*

September 13, 2023





# Agenda

## **I. Committee Chair's Remarks**

## **II. Action Items**

- A.** James W. Todd Bicentennial Professorship
- B.** Cohen Family Business Minor Bicentennial Professorship
- C.** Sydney Blair Memorial Professorship in Creative Writing
- D.** George F. Rich Professorship in Anesthesiology
- E.** Stacey E. Mills, M.D. Professorship in Pathology
- F.** Rebecca W. Rimel Dean's Chair in the School of Nursing
- G.** White Ruffin Byron Center for Real Estate
- H.** New Degree Program: Doctor of Philosophy in Computational Biology in the School of Medicine

## **III. Executive Vice President & Provost's Remarks**

## **IV. Discussion Items**

- A.** The 2030 Plan: Report on Strategic Goals
- B.** Undergraduate Advising Report

# Action Items





A GREAT AND  
GOOD UNIVERSITY

THE 2030 PLAN

AUGUST 2019

 UNIVERSITY of VIRGINIA

**I.**

**STRENGTHEN  
OUR  
FOUNDATION**

**II.**

**CULTIVATE THE  
MOST VIBRANT  
COMMUNITY IN  
HIGHER  
EDUCATION**

**III.**

**ENABLE  
DISCOVERIES  
THAT ENRICH  
AND IMPROVE  
LIVES**

**IV.**

**MAKE UVA  
SYNONYMOUS  
WITH SERVICE**

# I. STRENGTHEN OUR FOUNDATION

Recruit and support exceptionally talented, diverse, and service-oriented students, regardless of their economic circumstances.

Recruit and retain excellent and diverse faculty.

Attract and support talented and committed staff.

Ensure that our systems enable our students, faculty and staff to do their best work.

Promote a culture of integrity, mutual respect, excellence, collaboration, and innovation.

# Third-Century Faculty Initiative

1. Provide latest pedagogical tools and support to faculty
2. Increase recruitment of talented and diverse doctoral and post-doctoral students
3. Expand Ph-D Plus to include post-doctoral students
4. Create new cluster and TOPs hires
5. Expand Bicentennial Professorships

# Provide Latest Pedagogical Tools & Support to Faculty





# Increase Recruitment of Talented and Diverse Doctoral and Post-doctoral Students



- Important to our educational and research missions
- President's and Provost's Fellowships
- Resources:
  - PhD Plus Program
  - Graduate Student Writing Support



# Expand PhD Plus to Include Post-Doctoral Students

- Access to resources including on topics such as:
  - Grant Writing
  - Consulting
  - Data Literacy
  - Career Design/ Future Faculty Series

# Create New Cluster and TOPs Hires; Expand Bicentennial Professorships



- Cluster hires align with five Grand Challenges areas:
  - Democracy
  - Environmental Resilience and Sustainability
  - Precision Medicine/ Precision Health
  - Brain and Neuroscience
  - Digital Technology and Democracy
- Faculty Excellence – Targets of Opportunity
- Bicentennial Professorships

# III. ENABLE DISCOVERIES THAT ENRICH AND IMPROVE LIVES

Enable faculty and students to work across traditional boundaries.

Become an international leader in several distinct and critical areas of research.

Shed new light on enduring and profound questions.

Approach all learning as an opportunity for discovery.

# The Path to Research Preeminence

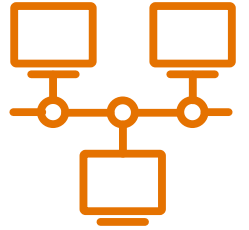
1. Launch the Precision Medicine Challenge
2. Launch the Digital Technology & Society Challenge
3. Launch the Environmental Resilience Challenge
4. Launch the Brain/Neuroscience Challenge
5. Launch the Biotechnology Institute
6. Create Seed Funding for Interdisciplinary Research
7. Launch the Democracy Institute
8. Substantially Upgrade Alderman Library
9. Make strategic investments in research infrastructure

# Research Administration/ VP for Research Organization



- Support for the Office of Sponsored Programs and other areas of research administration and development

# Research Cores



## Committed:

- Research Computing Equipment and Personnel
- Data Analytics Center
- Clinical Trials Unit
- Digital Technology Center
- Clinical Data Warehouse/ Data Health Enclave

## Considering:

- Quantitative Social Science Core
- Humanities Core
- Policy Core
- Vivarium – Beyond Biotech

# Faculty & Student Support



## Committed:

- Faculty PIs Bridge Funding
- Faculty Start-ups Cost-share
- Postdocs
- Seed Funding
- Shannon Center Mid-Career Fellows
- Pre-Tenure Faculty Mentoring Support

## Considering:

- Competitive Sabbatical/ Entrepreneurial Fellows
- Undergraduate Research Awards



# Research Space – Planned or In-Process



- Renovation of Alderman Library
- School of Data Science Building
- Paul and Diane Manning Institute of Biotechnology Building
- Research Computing Data Center
- Karsh/ Batten Building

# Research Space – Future Priorities



- Center for the Arts
- School of Engineering and Applied Science Building
- Research Space Renovation

**Questions?**



# I. STRENGTHEN OUR FOUNDATION

Recruit and support exceptionally talented, diverse, and service-oriented students, regardless of their economic circumstances.

Recruit and retain excellent and diverse faculty.

Attract and support talented and committed staff.

Ensure that our systems enable our students, faculty and staff to do their best work.

Promote a culture of integrity, mutual respect, excellence, collaboration, and innovation.

## SuccessUVA

1. Improve academic and career advising
2. Increase access through financial aid
3. Attract and support first generation students
4. Attract and support UR students
5. Build a new Student Health and Wellness Center
6. Build a new Contemplative Commons
7. Build a new Athletics Complex (football & Olympic sports buildings)
8. Create an expanded Multicultural Center

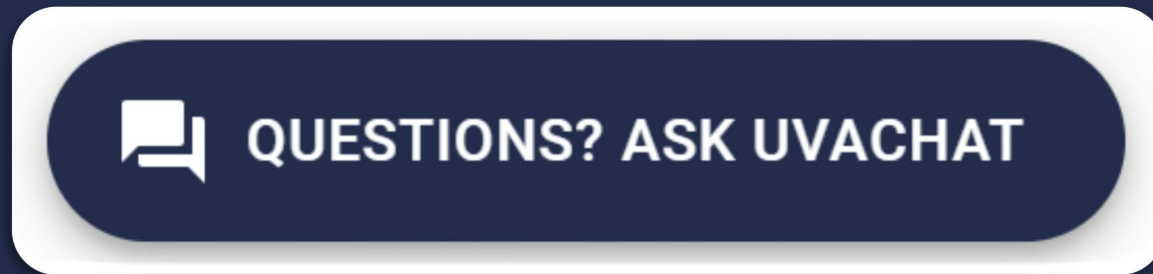
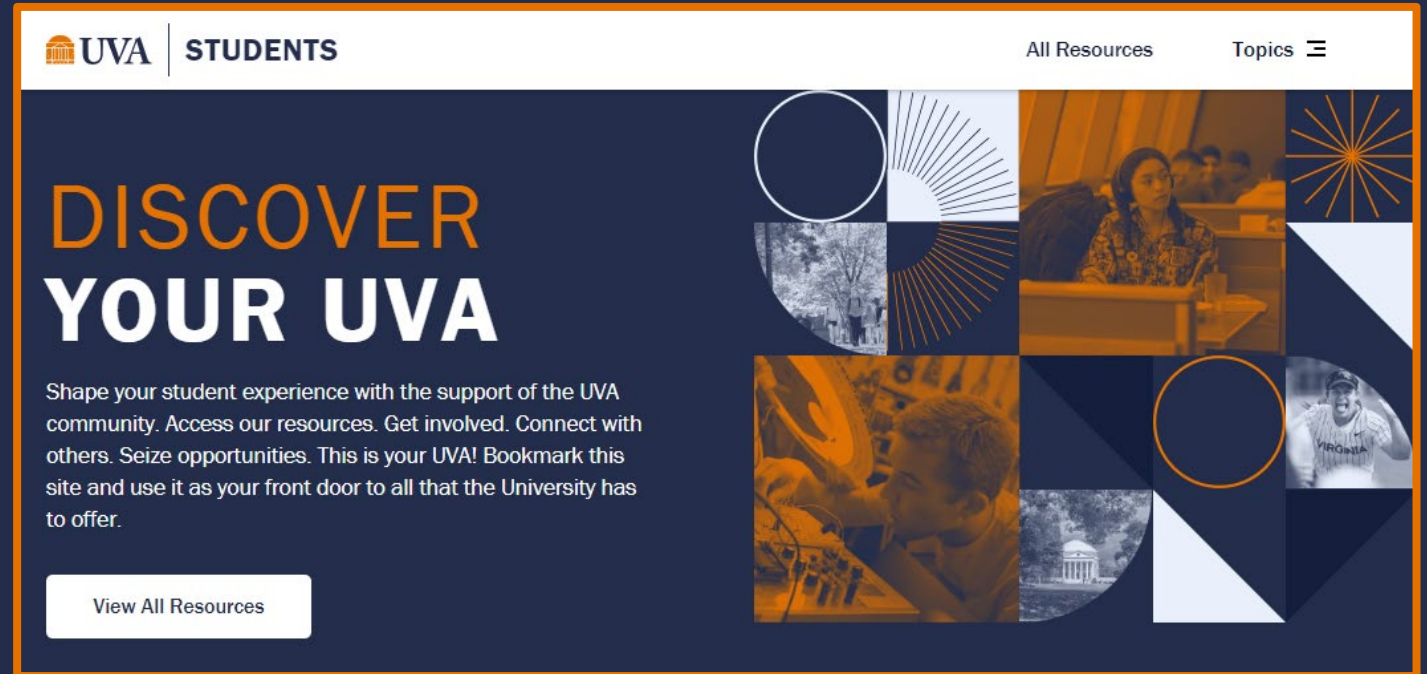
# *Undergraduate Advising*

*Brie Gertler  
Katie Densberger  
Jennifer West  
Christa Acampora*



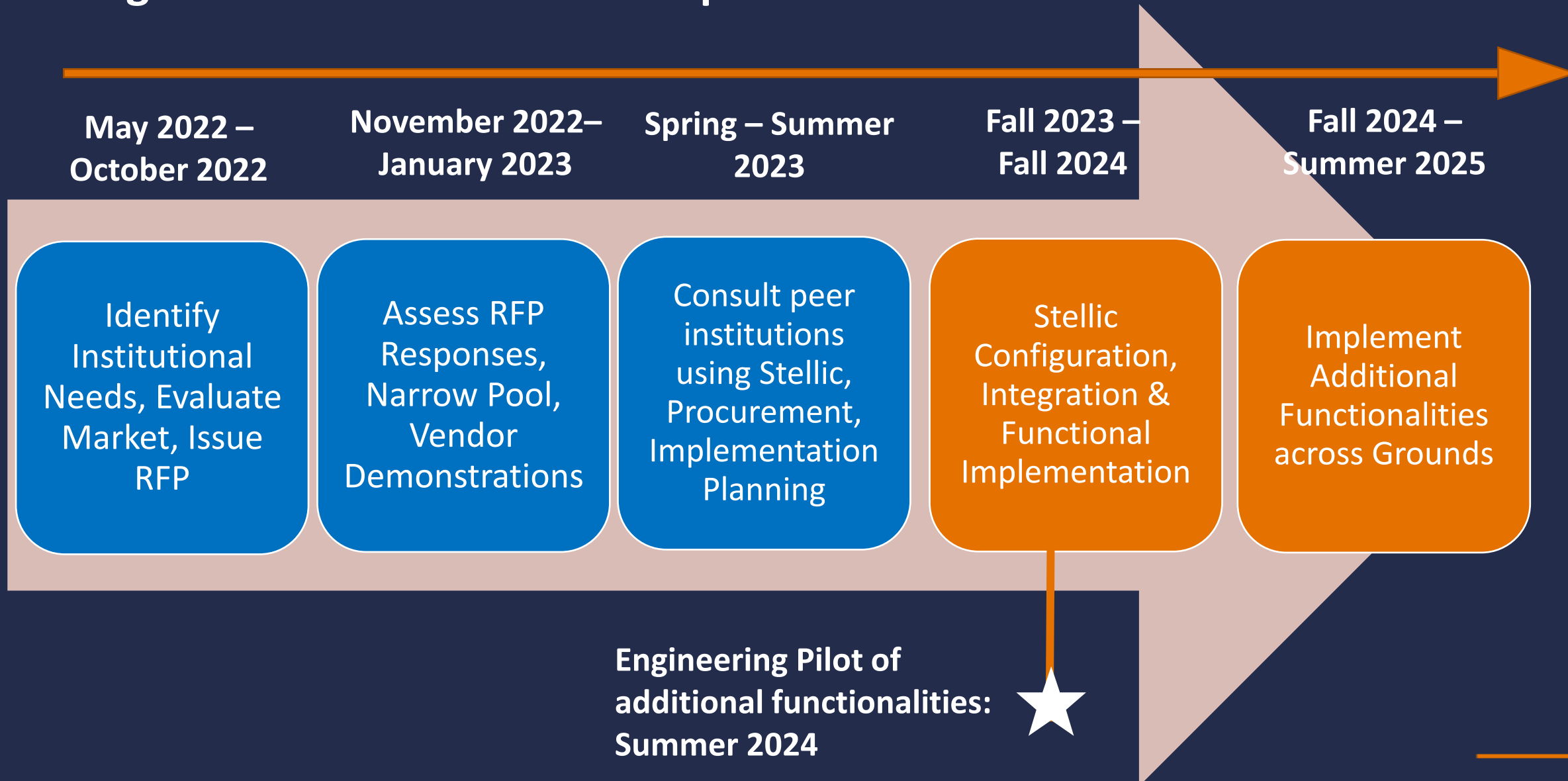
# Advising Communications Technology

New homepage for  
student resources:  
[students.virginia.edu](https://students.virginia.edu)



Chatbot for  
academic advising

# Advising Software Selection and Implementation





# New Advising Software Partnership

- An introduction from Stellic ([video link](#))

The screenshot displays the Stellic advising software interface. At the top left, there is a circular profile picture of a woman. Below it, the text reads "Primary Plan" and "Fall Term". The main area is a grid showing a weekly schedule from Monday to Friday. The time slots are 9AM, 10AM, 11AM, and 12PM. A green bar is at the top of the grid. The grid contains several colored blocks representing courses: a green block on Monday at 9AM, a green block on Tuesday at 11AM, a green block on Wednesday at 11AM, a yellow block on Thursday at 10AM, and a yellow block on Wednesday at 12PM. A grey block is on Friday at 10AM. A search overlay is on the right side, titled "Course Search". It has a search icon and two search boxes, each with an "x" icon. Below the search boxes are two dashed boxes with "+" signs. There are two green buttons with checkmarks: "PHY-05 Physics" and "MATH-01 Calculus". At the bottom right of the overlay is a white button with a "+" sign and the text "Internship". The Stellic logo is at the bottom center, with three colored dots (red, yellow, green) to its right.

**Primary Plan**  
Fall Term

	MON	TUE	WED	THU	FRI
9AM	Green Block				
10AM				Yellow Block	
11AM		Green Block	Green Block		
12PM			Yellow Block		

**Course Search**

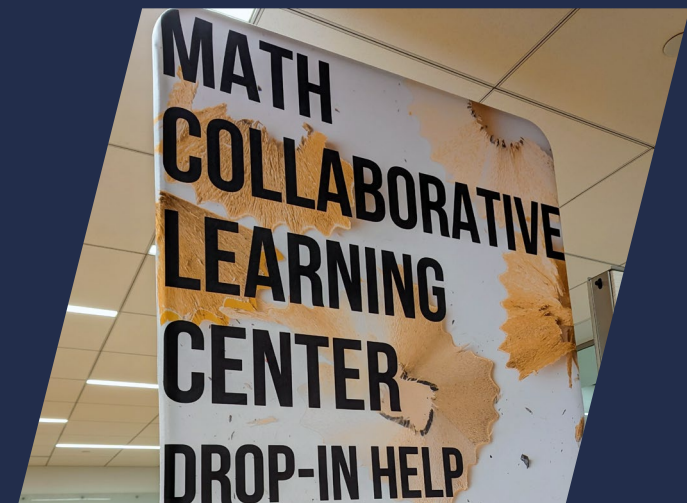
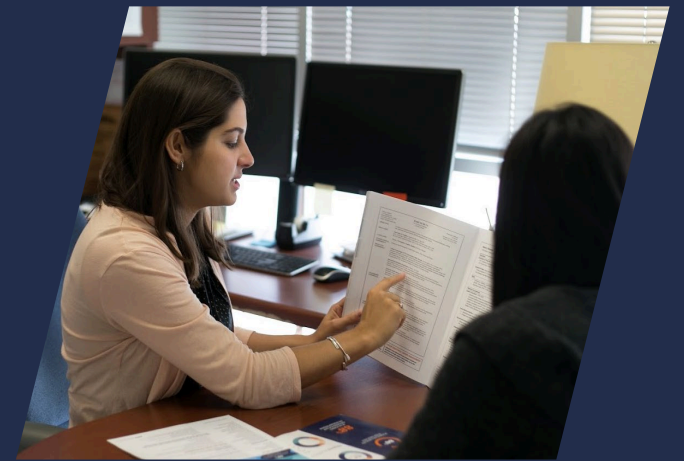
- PHY-05 Physics
- MATH-01 Calculus

+ Internship

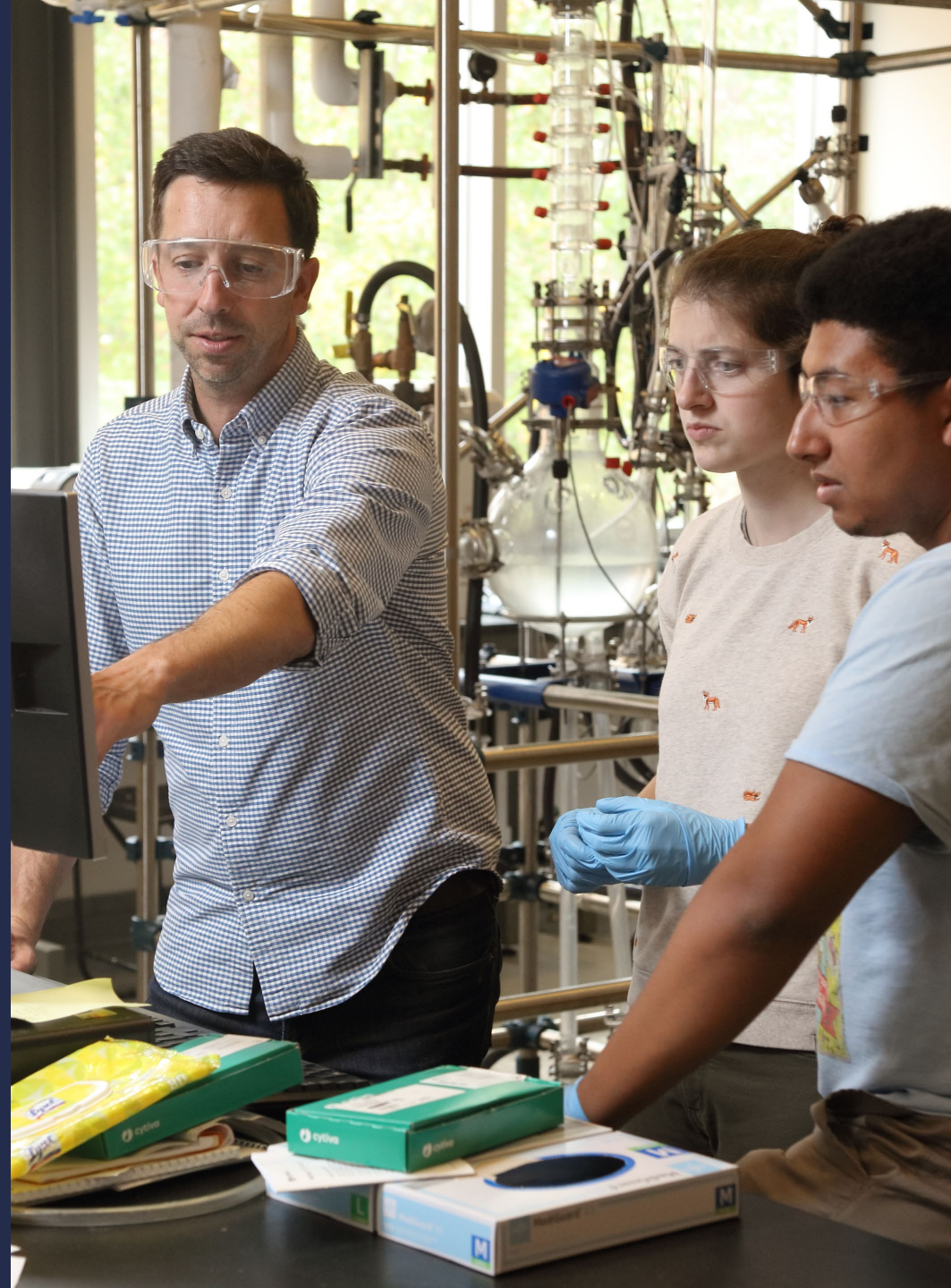
**Stellic**

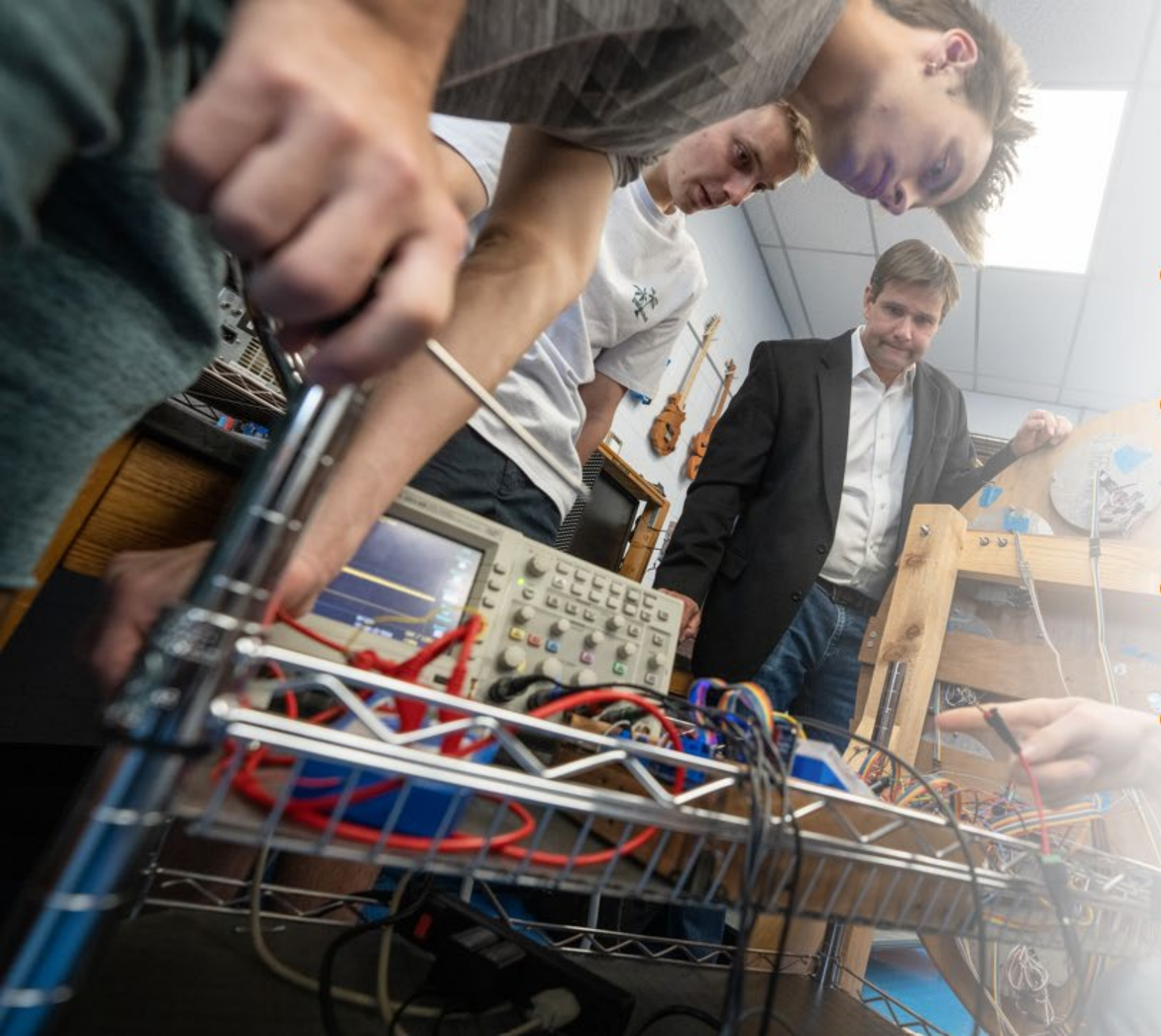
# Advising Initiatives

- Hoos at Home
- Georges Student Center
- Pre-Health Advising
- Undergraduate Learning Assistants



# *First-Year Advising in Engineering*





## Before 2013

- Faculty performed first-year advising
- Student support services were central to the University
- Four-year graduation rate was 89%
- Most students felt that their advisor wasn't invested in their success

# Two major changes after 2013 Advising Study

## Embedded Advising

- Tie advising to courses in the core curriculum to enhance student/advisor contacts and relationships

## Embedded Support

- Localize support services within school for easier access and increased awareness



# Embedded Advising

**Before** – first-year advising was performed by faculty across the school

- Typically, a first-year student met their advisor *twice in the first year*

**After** – a student's first year advisor is their instructor in an introductory engineering course

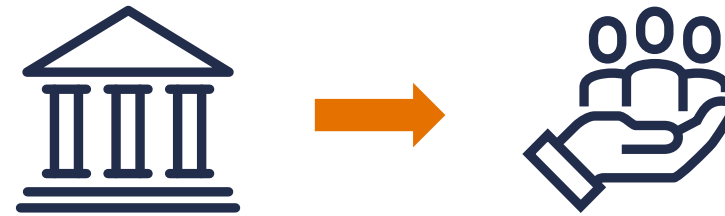
- Students see their advisor at least *twice a week* for the first semester
- Two Student Success Counselors provide additional advising resources



# Embedded support

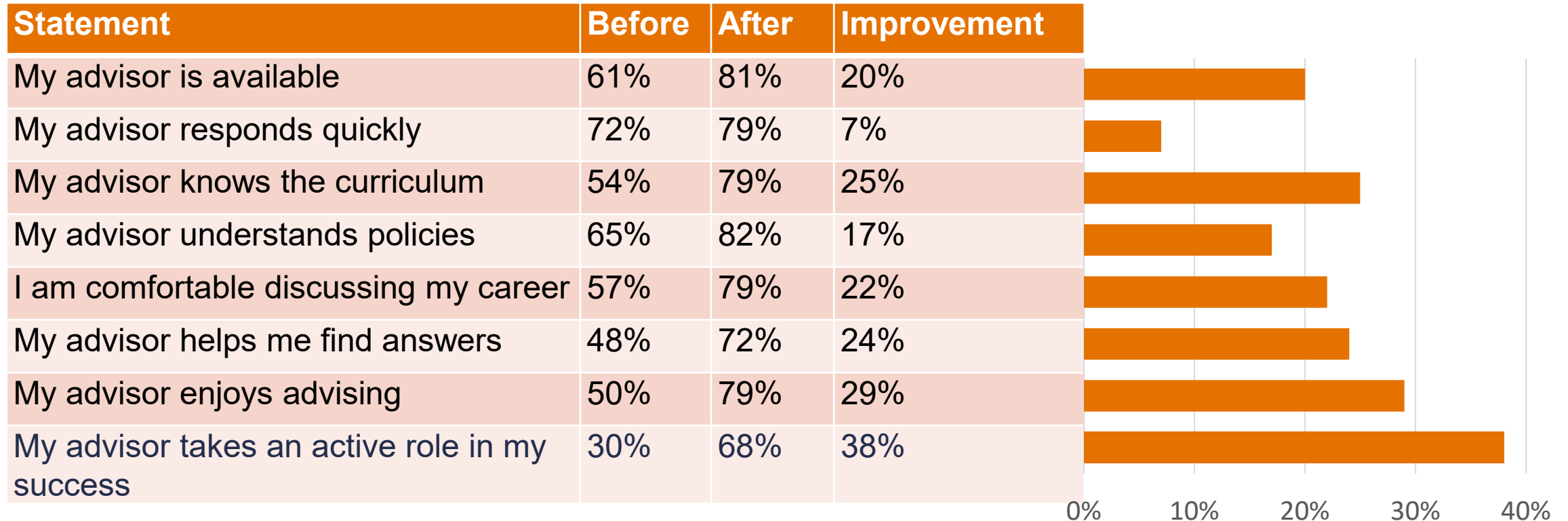
**Before** – support is centralized

**After** – support is embedded in SEAS



- Assistant Dean of Students *in Engineering*
- Two CAPS counselors *in Engineering*
- Accessibility Advisor *in Engineering*

# Across the board gains with embedded advising





# 92%

## Four-year Graduation Rate

Six-year graduation rate is 97%

National average four-year graduation rate for engineering schools is 32%



# Enhancing our approach

## Engineering Foundations 1 & 2

A **two-semester** course sequence that integrates

- Engineering design skills
- Career development programming
- **Academic advising**

Based on a successful, twice-piloted model

Taught by a dedicated faculty cohort who are trained in advising

Students see their advisor at least twice per week the entire first year

Two Student Success Counselors still available for additional advising resources



# Enhancing our approach

## Advisor training piloted this year

### Introductory training during summer

- University Structure
- Introduction to the Embedded Advisor Model
- Student Population and Major Distribution
- Engineering Career Development
- Accessibility and Accommodations
- International Studies
- First Year Curriculum and the Undergraduate Record

### Continued monthly training for all first-year advisors

Jennifer West

Dean, University of Virginia School of Engineering and Applied Science

[jwest@virginia.edu](mailto:jwest@virginia.edu)



---

*Getting It Done:  
College Advising  
in a Great & Good  
University*



UNIVERSITY  
*of* VIRGINIA





***The pathway for UVA to become the best public in the nation and one of the best universities anywhere in the world runs directly through the College and Graduate School of Arts & Sciences.***

- **A&S Vision for Excellence**
- **Advising Strategic Implementation**
- **Shared Future for Success**



## **A&S Vision for Excellence**

*A&S will be recognized for delivering a second-to-none undergraduate experience that is also an unprecedented achievement in public higher education.*



## A&S Vision for Excellence

*A&S will be recognized for delivering a second-to-none undergraduate experience that is also an unprecedented achievement in public higher education.*

**Honors experience for all students**

**High quality advising is essential for success.**

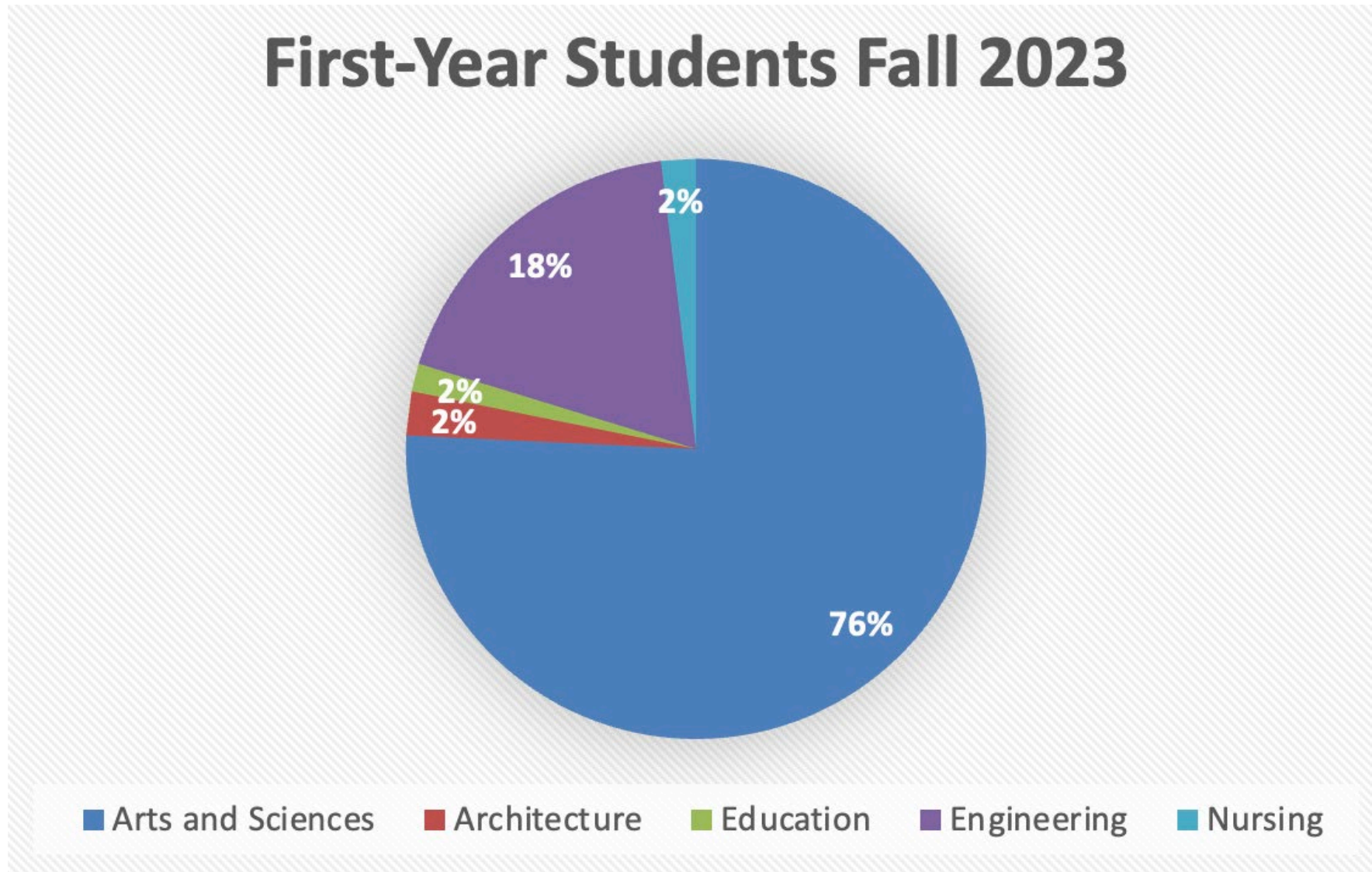




# Strategic Execution

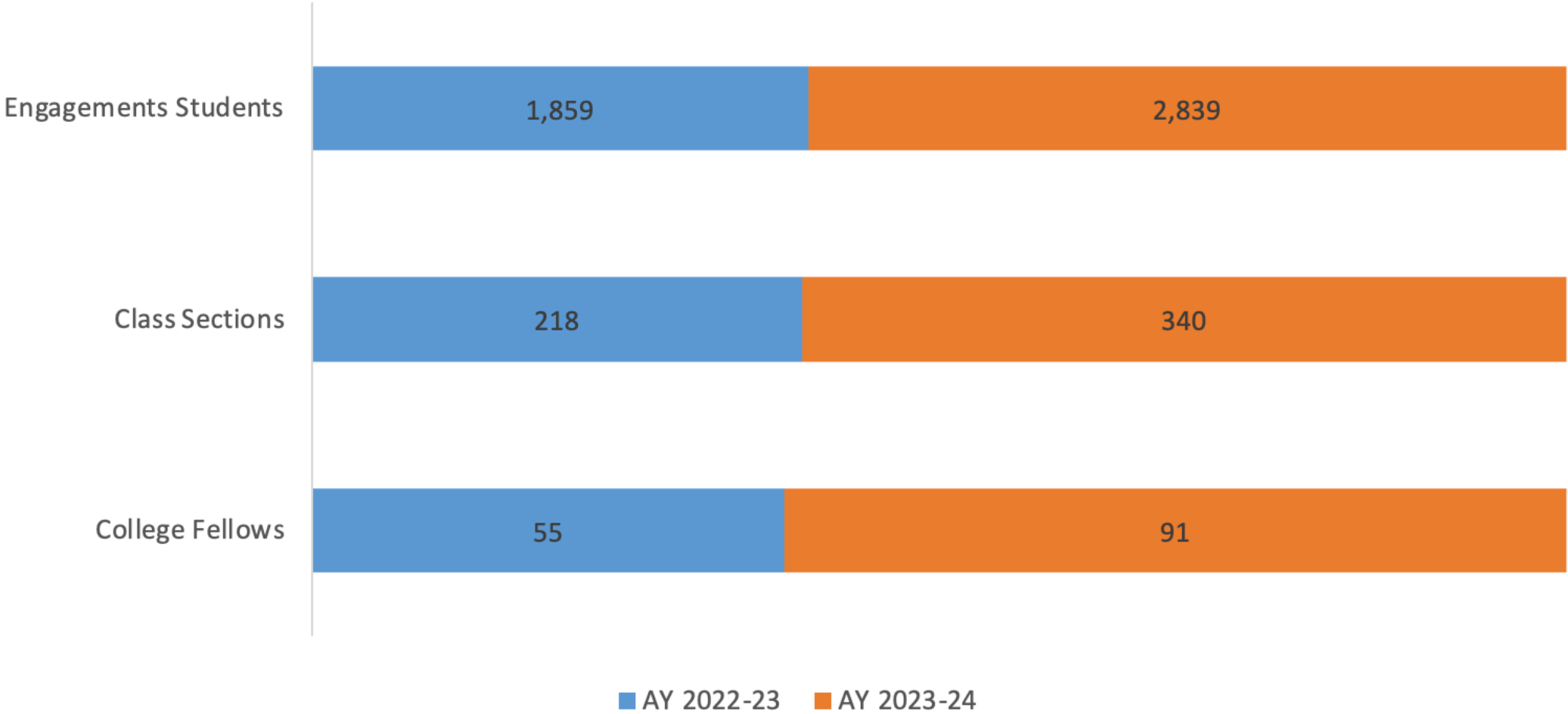
- ✓ Milestone Achievement: Delivering a First-Year Experience
- Integrating advising in a holistic, systematic way **In progress 2023**
- Understanding changing student demographics and post-pandemic needs **In progress 2023**
- Refining the vision and integrating across the full four years **Ongoing**

# Impact & Milestone Achievements



# Impact & Milestone Achievements

## Engagements Students, Class Sections, and College Fellows AY 2022-23 to AY 2023-24



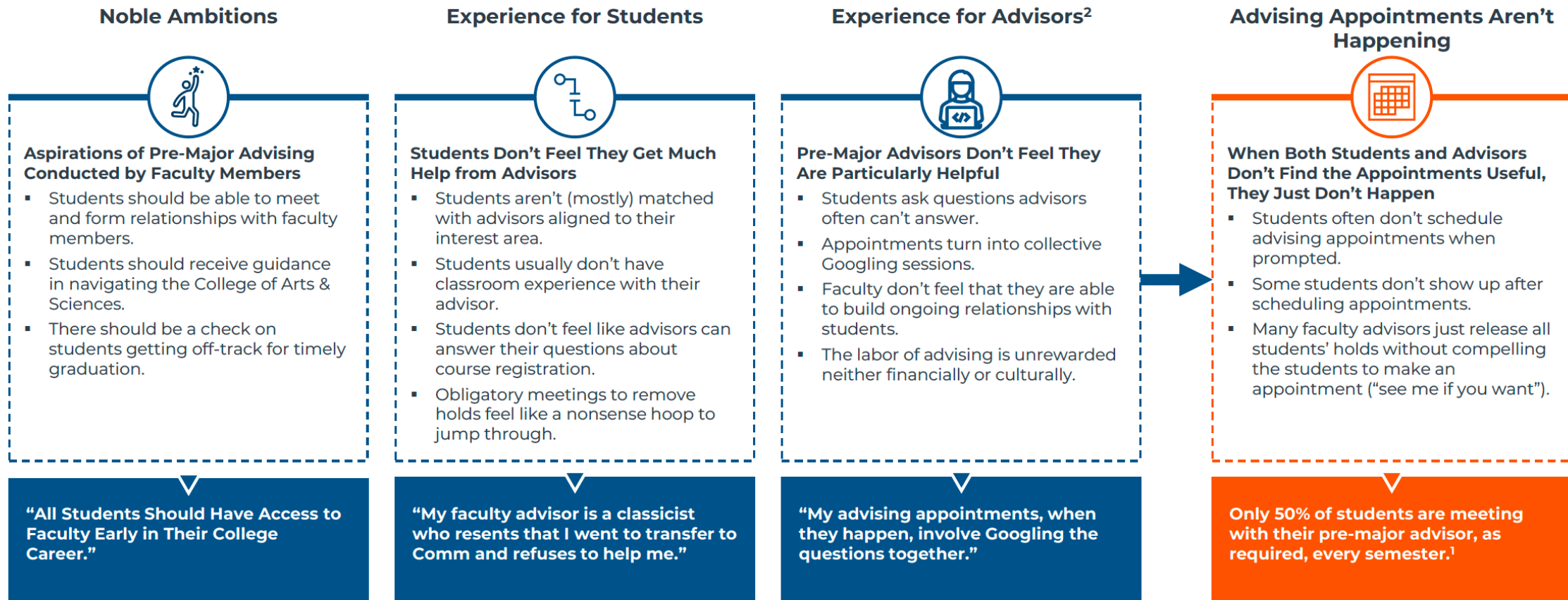


# Strategic Execution

- ✓ Milestone Achievement: Delivering a First-Year Experience
- Integrating advising in a holistic, systematic way **In progress 2023**
- Understanding changing student demographics and post-pandemic needs **In progress 2023**
- Refining the vision and integrating across the full four years **Ongoing**

# Pre-Major Advising is Not Working

Noble ambitions have been overcome by the realities of an ill-suited experience for everyone involved. The result is pre-major advising often simply isn't happening at all.



# “Outcomes” Not Bad, But Experience Can Be

UVA retains high top-level measures of student success. Retention and graduation rates remain exemplary. But are students having a positive advising experience?

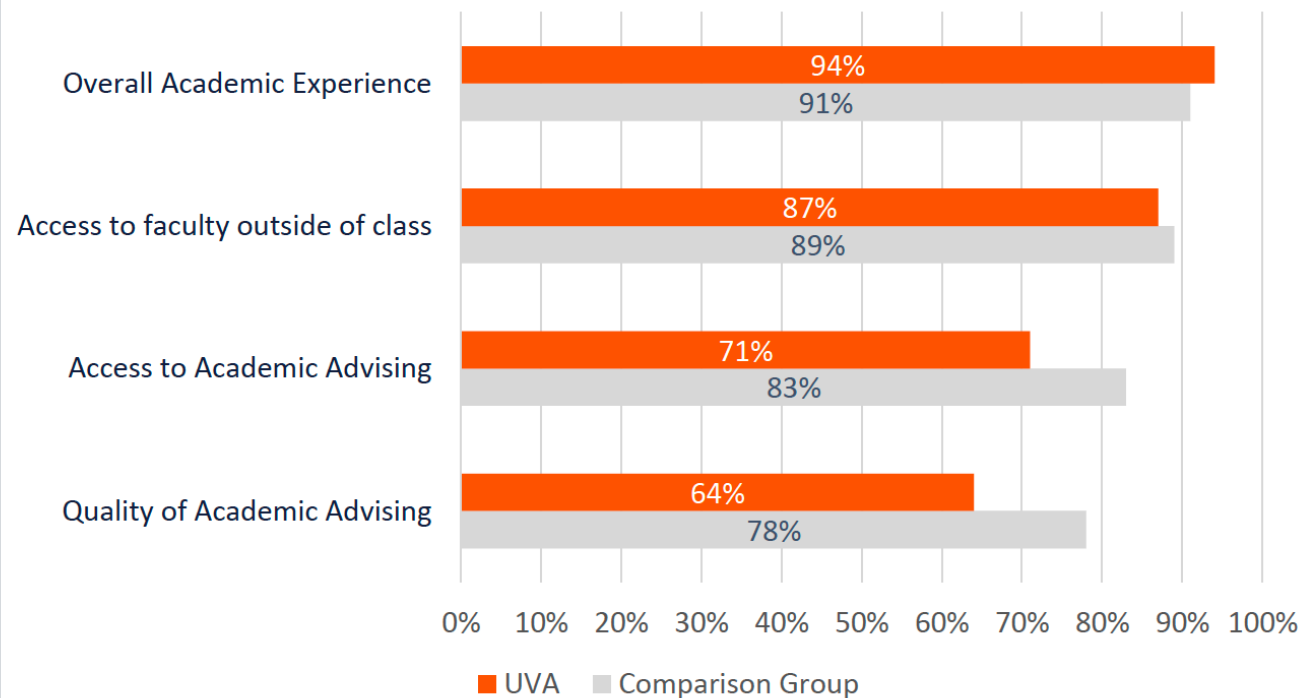
95%

Overall 6-yr  
Graduation  
Rate

97%

Overall  
Retention  
Rate

## UVA Students Academic Experience (SERU 2022<sup>1</sup>)

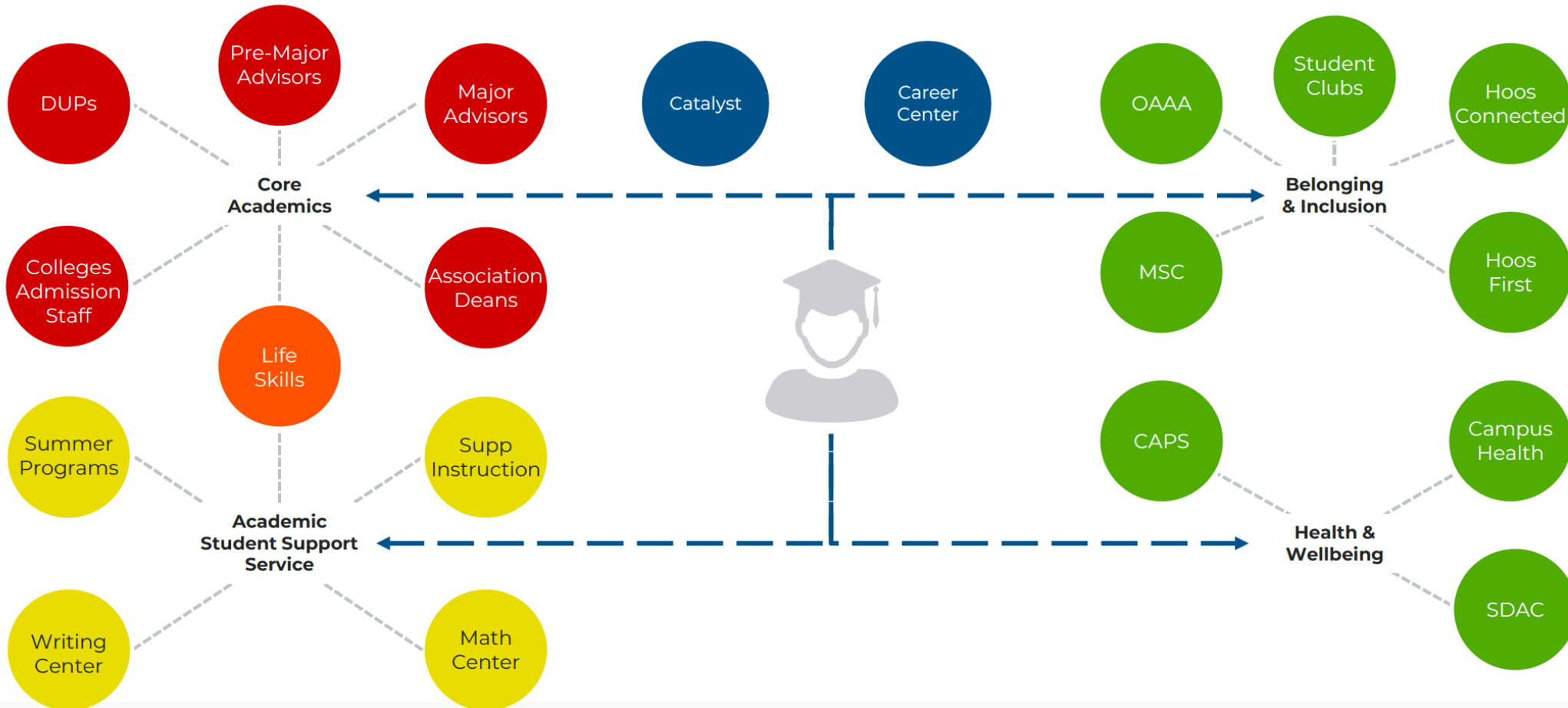


## Key Takeaways

- Students are generally having a **positive academic experience** across Grounds, including interactions with faculty
- Access to and the quality of academic advising is **significantly less favorable** for UVA students than for their peers.
- Academic Advising **may be disconnected** in the minds of students from their overall academic experience

# Current Student Support Experience

The College's web of support is no less populated than many institutions, however, there is no "guide" to shepherd new students as they begin their journey at UVA.



## INTEGRATED SUPPORT

The Total Advising Center will be staffed by a number of integrated generalists, referred to as "Rangers" in this report. These individuals will be available to students to help them identify opportunities and connect to academic, career and personal support services within and beyond the Center.

Generalist  
"Rangers"

### CAREER SUPPORT

In addition to academic support, career services related to the academic experience will be offered on a rotating basis in the Center.

General Academic Advising

- Academic Advisors / "Cluster heads"

Pre-prof. and Grad. School Advising

- UCS Pre-Law and Pre-Health Advising

Academic Internships

- UCS Internship Center

Students

### PERSONAL SUPPORT

In addition to academic support, personal support services related to the academic experience will be offered on an episodic, infrequent basis during peak need (e.g. at the beginning or end of the semester)

Health & Mindfulness

- Counseling and Psychological Support (CAPS)
- Contemplative Sciences Center

Financial

- Student Financial Services
- Univ. Registrar
- Patient Financial Services

## ACADEMIC SUPPORT

The primary services delivered in the Center will be Academic Support services, with many of the functions and services (described in red boxes below) being offered on a frequent, consistent basis from day to day during the academic year.

Academic Advising

- School-specific advising
- ARC (online)

Scholarship

- Center for UG Excellence (CUE)
- UG Research Network (URN)

Academic Coaching

- Student Disability & Access Center (SDAC)

Study Abroad

- International Studies Office (Education Abroad, ISSP, S&SAP)

Library Instructional Programs

- First year critical thinking
- Subject-specific research skills
- Production and creation

Peer Advising

- ULink
- Honor
- Special Populations Advising

Mentoring / Tutoring

- Writing Center
- Math Tutoring
- Center for Diversity in Engineering
- Contemp. Sciences Center



## INTEGRATED SUPPORT

The Total Advising Center will be staffed by a number of integrated generalists, referred to as "Rangers" in this report. These individuals will be available to students to help them identify opportunities and connect to academic, career and personal support services within and beyond the Center.

Generalist  
"Rangers"

### CAREER SUPPORT

In addition to academic support, career services related to the academic experience will be offered on a rotating basis in the Center.

General Academic Advising

- Academic Advisors / "Cluster heads"

Pre-prof. and Grad. School Advising

- UCS Pre-Law and Pre-Health Advising

Academic Internships

- UCS Internship Center

### PERSONAL SUPPORT

In addition to academic support, personal support services related to the academic experience will be offered on an episodic, infrequent basis during peak need (e.g. at the beginning or end of the semester)

Health & Mindfulness

- Counseling and Psychological Support (CAPS)
- Contemplative Sciences Center

Financial

- Student Financial Services
- Univ. Registrar
- Patient Financial Services

Students

## ACADEMIC SUPPORT

The primary services delivered in the Center will be Academic Support services, with many of the functions and services (described in red boxes below) being offered on a frequent, consistent basis from day to day during the academic year.

Academic Advising

- School-specific advising
- ARC (online)

Scholarship

- Center for UG Excellence (CUE)
- UG Research Network (URN)

Academic Coaching

- Student Disability & Access Center (SDAC)

Study Abroad

- International Studies Office (Education Abroad, ISSP, S&SAP)

Library Instructional Programs

- First year critical thinking
- Subject-specific research skills
- Production and creation

Peer Advising

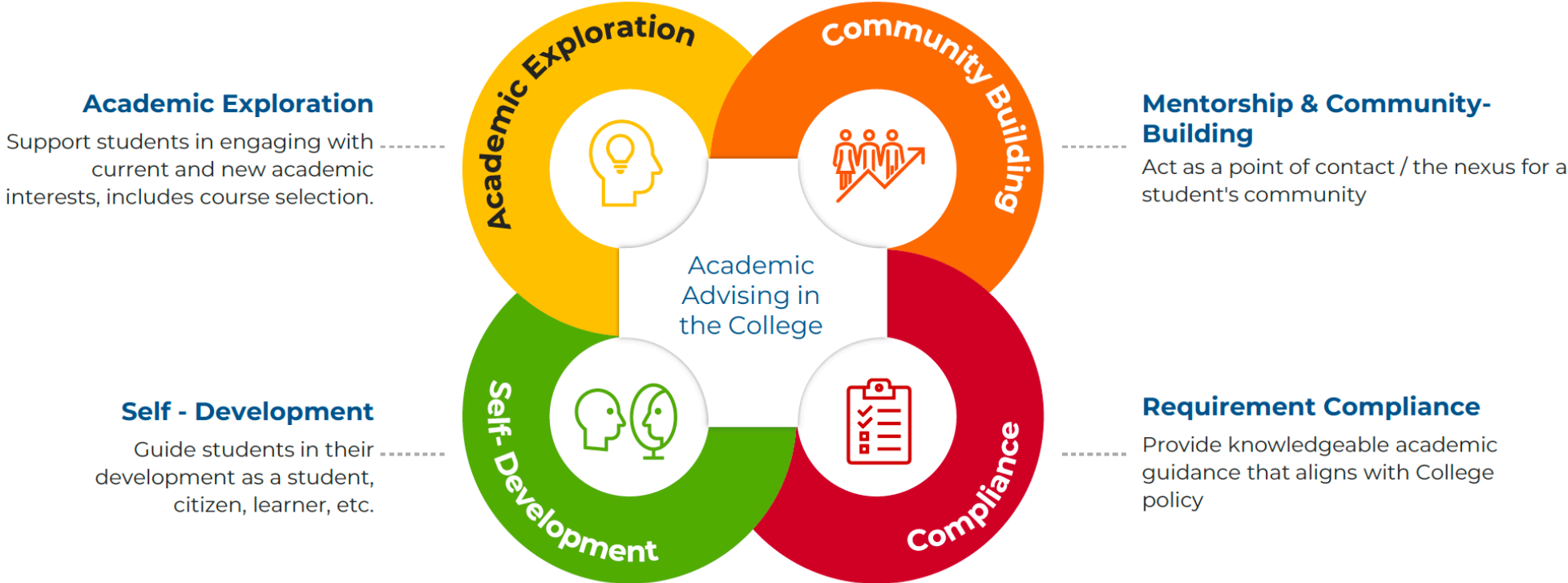
- ULink
- Honor
- Special Populations Advising

Mentoring / Tutoring

- Writing Center
- Math Tutoring
- Center for Diversity in Engineering
- Contemp. Sciences Center

# Advising in the College of Arts & Science

Based on our review of the survey responses and the feedback provided throughout our conversations with various campus stakeholders we identified the following as the key drivers for the College’s academic advising.





# Our Shared Future for Success

- An advising network that fits our needs and vision for excellence
- Leadership that puts the student experience at the center
- Continual assessment & improvement
- Testing best-in-class & highly effective practices
- A sustainable resource model worthy of investment

**Questions?**



---

*Thank You*



UNIVERSITY  
*of* VIRGINIA

