

Paul and Diane Manning Institute of Biotechnology



Update

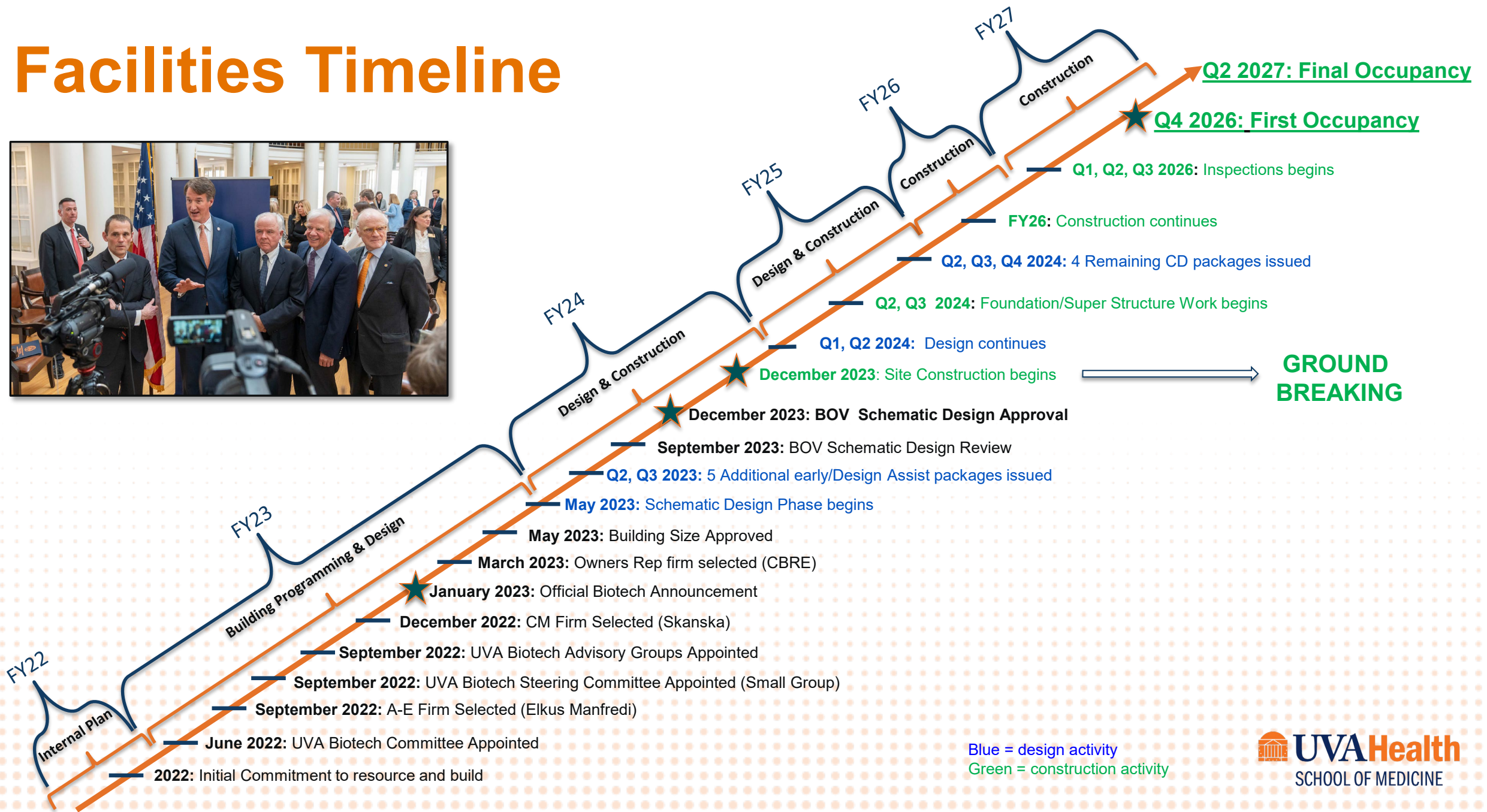
June 1, 2023

MELINA R. KIBBE, MD
Dean, UVA School of Medicine
Chief Health Affairs Officer, UVA Health

The Biotechnology Institute

- Build a modern 350,000 square foot research facility
- Recruit 100 new translational researchers as well as their teams
- Create a statewide clinical trials network to provide patients access to new therapies
- Develop biotech partnerships and a biotech/university ecosystem

Facilities Timeline



Steering Committee

- Melina Kibbe - Dean UVA School of Medicine
- Melur Ramasubramanian - Vice Provost for Research
- Harry Sontheimer - Chair, Department of Neurosciences
- Alice Raucher - University Architect
- Adam Daniel - Vice Provost for Planning
- George Southwell - Associate Director for UVA Health Construction

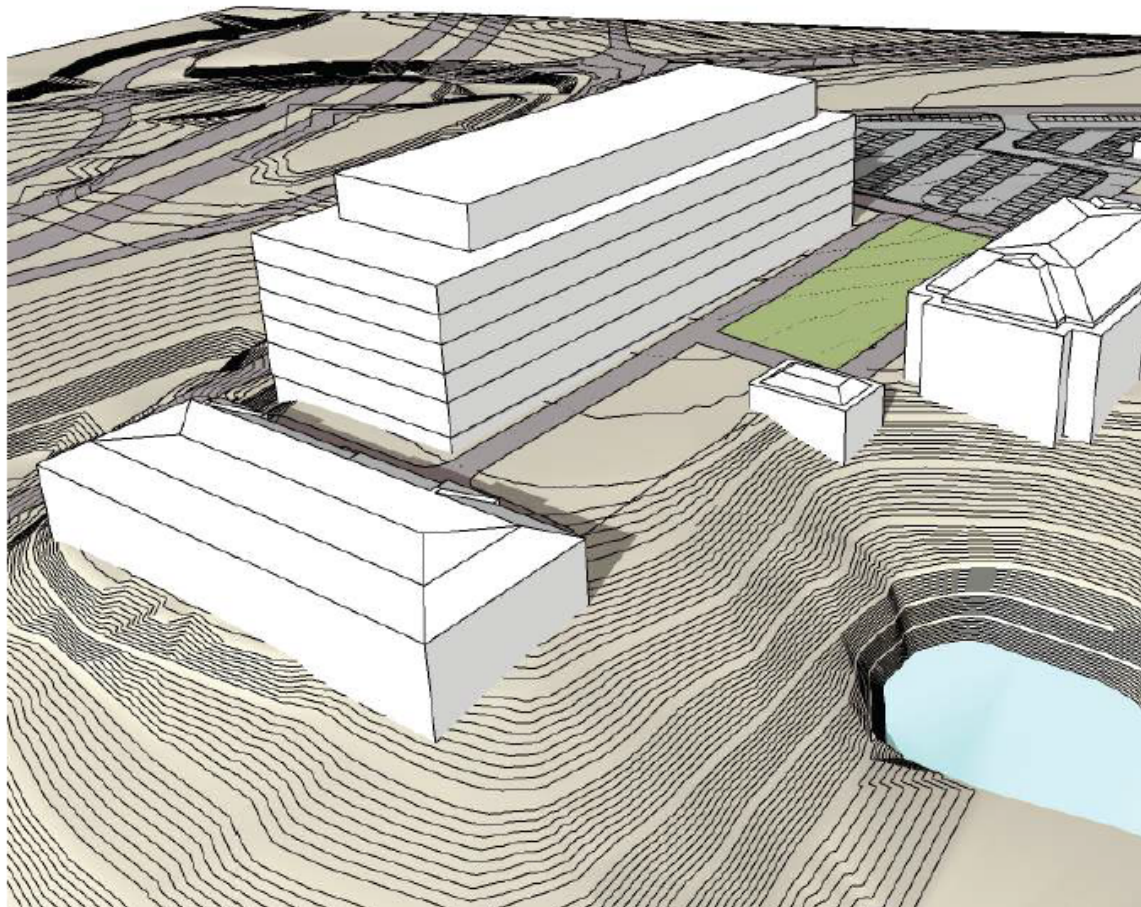
Advisory Committees

- cGMP Advisory Committee
 - Chair: Linda Duska & Larry Lum
- Vivarium Advisory Committee
 - Chair: Sandy Feldman
- Research Cores Advisory Committee
 - Chair: Jay Fox
- Lab Design Advisory Committee
 - Chair: Randy Speight & Jianjie Ma

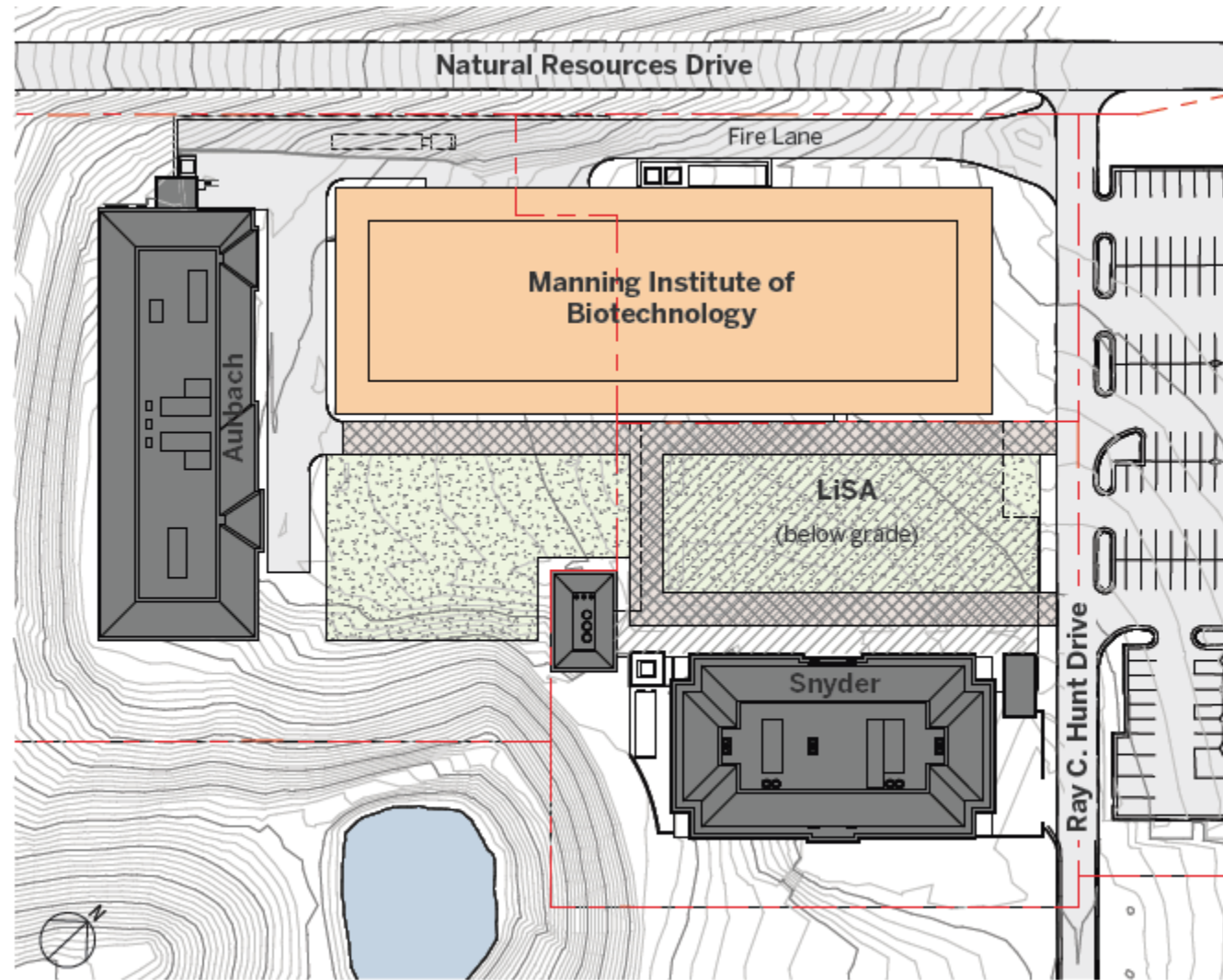


Existing Fontaine Site

3 Dimensional Image (Bar Concept)



Facility



Scale and Cost

Program	Initial Build out Phase 1 Gross SF	Second Build out Phase 2 Gross SF	Total Gross SF
Vivarium	10,000 SF	10,000 SF	20,000 SF
cGMP	10,000 SF	10,000 SF	20,000 SF
Core Labs	5,000 SF	5,000 SF	10,000 SF
Building Community (Conf Center, Lobby, F&B)	14,000 SF	13,000 SF	27,000 SF
Building Support (Loading Dock)	9,000 SF	0 SF	9,000 SF
Mechanical Penthouse (estimate)	30,000 SF	0 SF	30,000 SF
Universal Lab	130,000 SF	104,000 SF	234,000 SF
TOTAL	208,000 SF	142,000 SF	350,000 SF
Primary Investigators	70 PIs	56 PIs	126 PIs

Universal Lab:

234,000 Gross SF = 152,100 Net SF (assuming 65% efficiency on the floor)

152,100 Net SF/126 Primary Investigators = 1,207 Net SF/PI

Layout of the 6 Floors



Level 1
15 Pi's

Basement
20K Vivarium
10K Core Labs

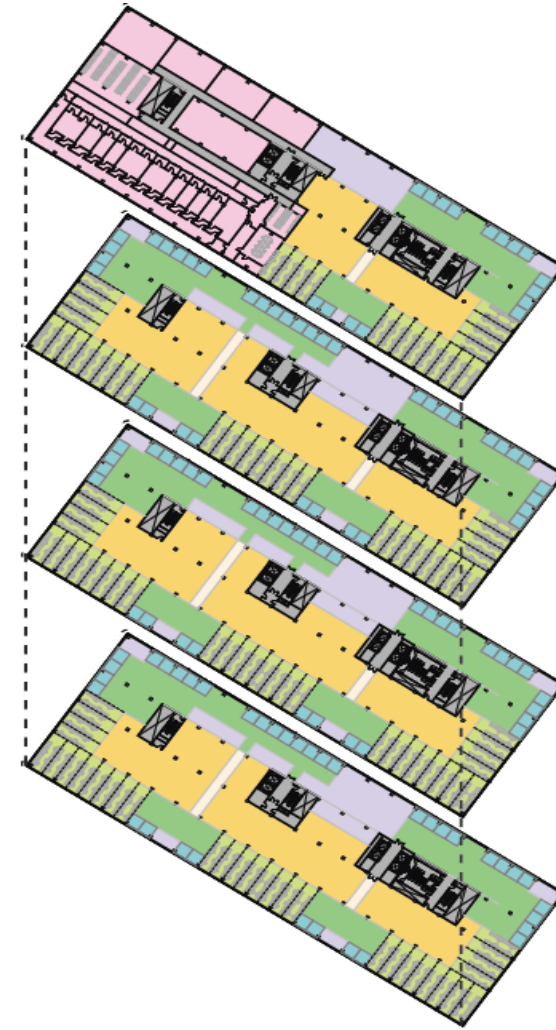


Level 5
15 Pi's
20K cGMP

Level 4
32 Pi's

Level 3
32 Pi's

Level 2
32 Pi's

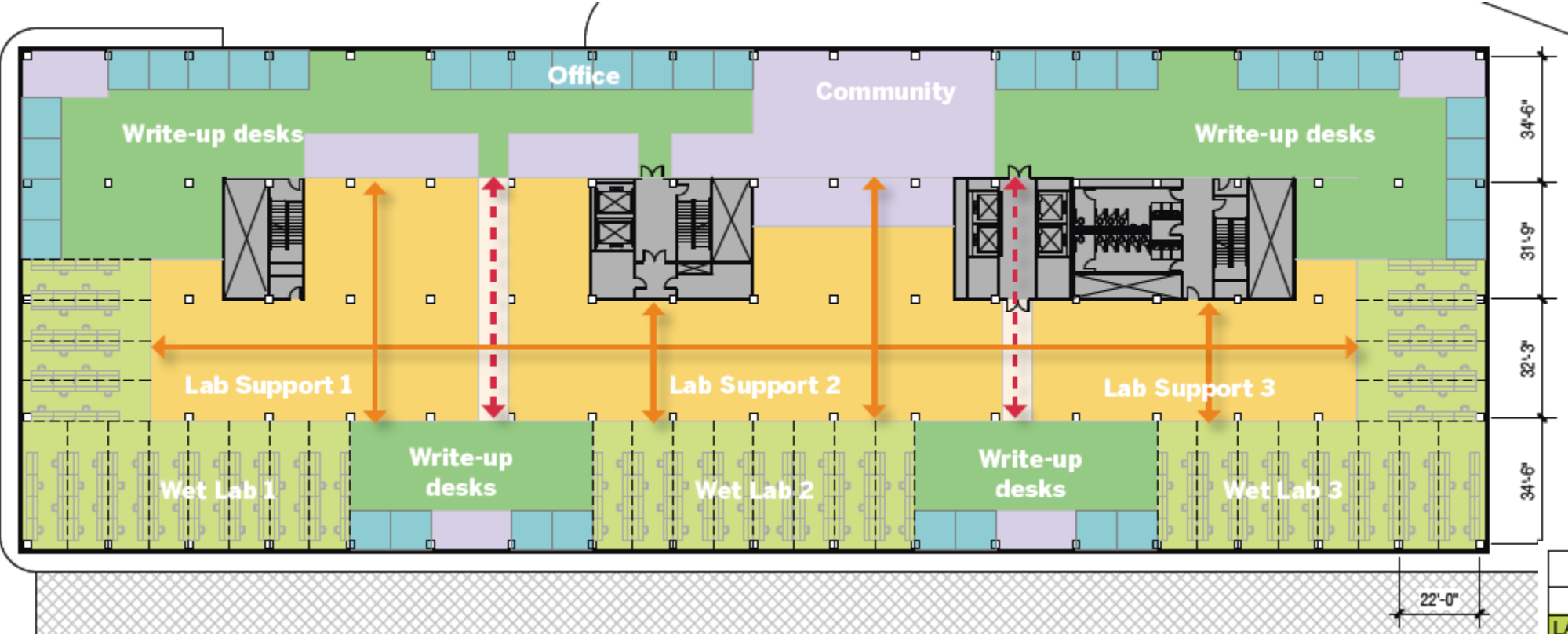


Stacking Plans

UVA MANNING INSTITUTE OF BIOTECHNOLOGY
ELKUS MANFREDI ARCHITECTS

alth
CINE

Lab Layout



RATIOS 2 - OFFSET CORE_1	
PROGRAM	% RATIO
LAB	24%
LAB SUPPORT	26%
WRITE-UP	22%
OFFICE	9%
COMMUNITY	10%
CORE	10%
	100%

Recruiting Talent

Recruitment of unique and difficult to find researchers that have demonstrated success with translational research

- Completed and signed first MOU with the state for initial recruiting support
- Proposed second MOU for additional state support which is currently under review
- Recruitment of SOM researchers already underway - **17** scientists hired during FY23 YTD with extensive biotech experience
- Recruitment contract signed with Korn Ferry for:
 - Institute Chief Scientific Officer
 - Institute Chief Operations Officer
 - An additional 10 Researchers

What Type of Research Will We Perform?

- Gene therapy
- Cellular therapy
- Nanotherapeutics
- Small molecule therapeutics
- Viral therapies
- Immunotherapies
- Vaccine development

Statewide Clinical Trials Network

- Create a ***clinical trials network*** that leverages UVA Health's existing **statewide *clinical network*** (hospitals and affiliations in Northern, Southcentral, Southwestern and Eastern Virginia)
- Goal:
 - Use UVA Health's extensive patient base to test new therapies
 - Provide all Virginians access to emerging therapies
 - Guarantee that no Virginian will ever have to leave the state for complex medical care

Industry Partnerships

- Attract pharmaceutical and biotech industry partners to:
 - Collaborate with researchers at UVA
 - Lease space in the biomanufacturing facility
 - Create hubs for biotech research and manufacturing in Virginia and around UVA
- Inspire pharmaceutical and biotech companies to permanently reside in VA

**We are incredibly grateful for the generosity,
enthusiasm and vision of Paul and Diane
Manning**

**We anticipate this being one of the most
transformative initiatives of UVA over the
coming decade**

Thank you!

melinakibbe@Virginia.edu