



UVA Board of Visitors Buildings and Grounds Committee

September 14, 2023

Agenda

- Remarks by the Chair
- Consent Agenda
 - Namings
 - Demolition of structures for Ivy Corridor Phase IIA
- Schematic Design Approvals
 - Scott Stadium Video Scoreboard
 - Fontaine Central Energy Plant and Utilities
- Schematic Design Reviews
- Report by the Senior Vice President for Operations & State Government Relations

Consent Agenda

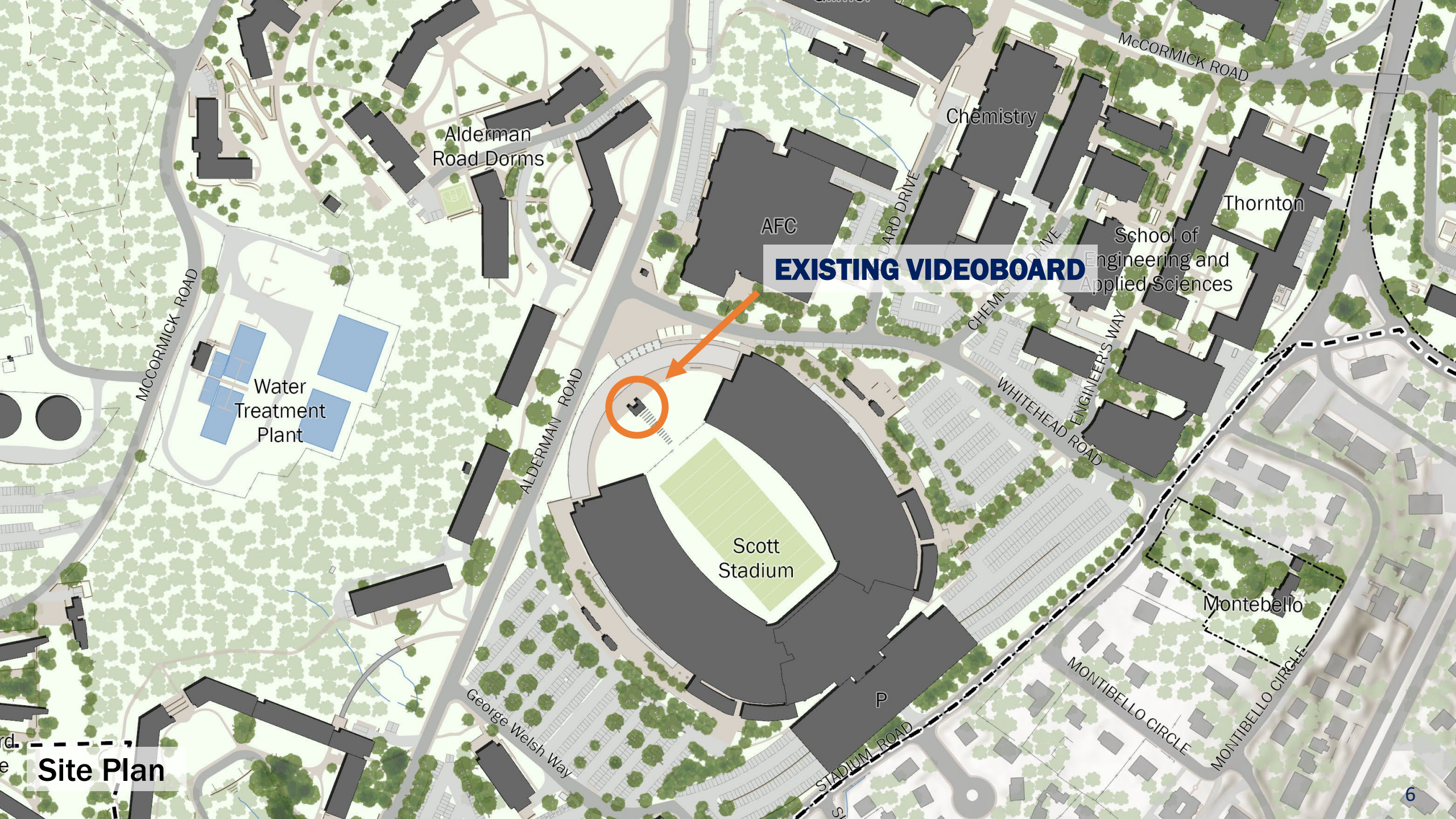


Consent Agenda

- Namings
 - Ruth Patrick Hall at Mountain Lake Biological Station
 - Dr. Thomas Braciale Memorial Garden
 - Gaston House and Ramazani House
 - Lauren Morel Stream at the Darden Arboretum
 - Food and Beverage Spaces at Virginia Guesthouse:
The Counter Café, Poplar, and The Perch
- Demolition of structures for Ivy Corridor Phase IIA

Schematic Design Approval: Scott Stadium Video Scoreboard





Alderman Road Dorms

AFC

Chemistry

Thornton

School of Engineering and Applied Sciences

EXISTING VIDEOBOARD

Water Treatment Plant

Scott Stadium

Montebello

Site Plan



Existing Scott Stadium Videoboard – Field View

SCOTT STADIUM

IN-GAME STATS

44	RUSH YDS	125
15	RUSH ATT	23
105	PASS YDS	175
27	PASS ATT	18
149	TOTAL YDS	300
3/8	3RD DOWN	6/10
0/2	4TH DOWN	1/2
2	FUMBLES	1
3	INT	2
11:55	POSS	15:25

OOT SCORES

FSU	10:34	SU	24
UNC	8:52	USC	14
GT	11:54	UM	10
UF	4:16	WF	28
BC	5:35	PITT	31

28 VT 24 10:34 4TH

DONOR

Proposed Scott Stadium Videoboard – Field View



Existing Scott Stadium Videoboard – North Gate Plaza View



Proposed Scott Stadium Videoboard – North Gate Plaza View

Schematic Design Approval: Fontaine Central Energy Plant



Map of Grounds with UVAF Land

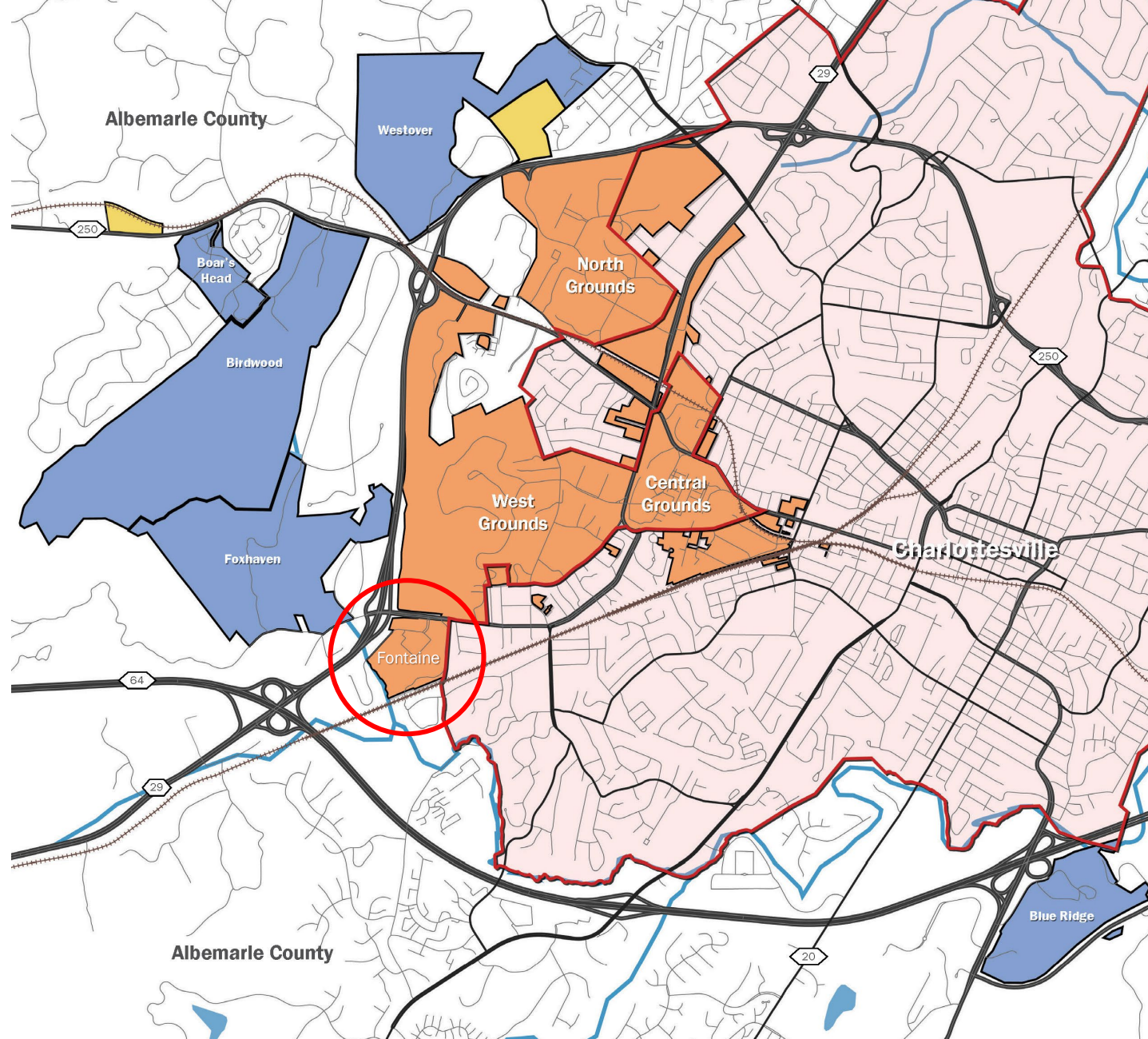


Figure 1. Map of Grounds and Nearby UVA Foundation Lands

- Extent of Grounds
- Off-Grounds UVA Property
- Off-Grounds UVA Foundation Lands
- City of Charlottesville

Location Plan

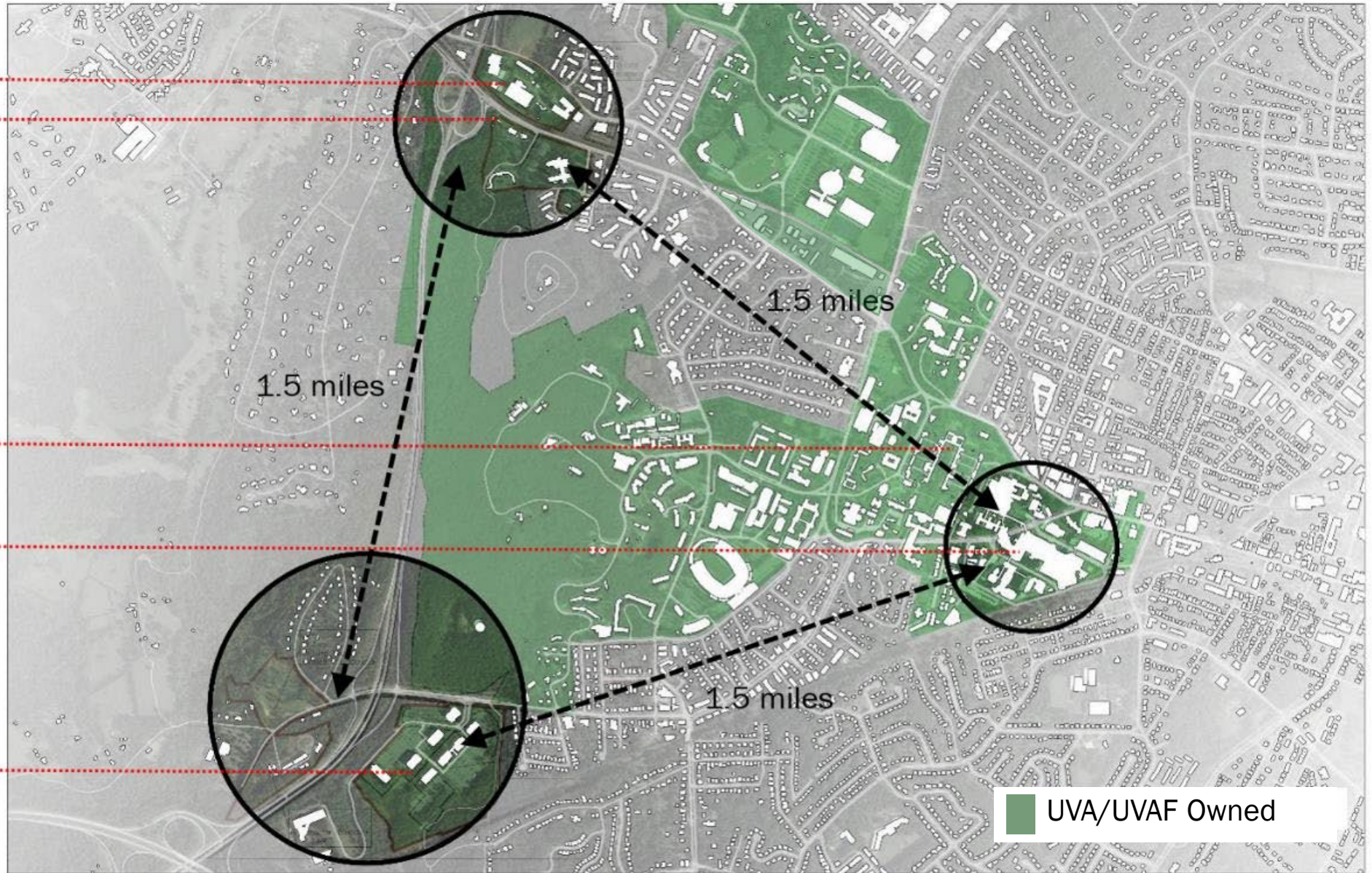
Old Ivy Road Site

Ivy Mountain Site

The Grounds

Medical Center

Fontaine



UVA/UVAF Owned

Location Plan



Science & Engineering

Fontaine Research Park

UVA Health System

US-29

Fontaine Ave

Jefferson Park Ave

University Ave

Main St

Jefferson Park Ave

Existing Program at Fontaine

450 Ray C. Hunt (Aurbach Medical Research)

Rheumatology, Endocrinology, Pathology, Surgery,
Psychiatry, Comparative Medicine

500 Ray C. Hunt (Clinical)

Cardiology, Cardiac Rehab, Ob/Gyn, Urology

480 Ray C. Hunt (Snyder Translational Research)

Neurology, Radiology, Comparative Medicine,
Biophysics

515 Ray C. Hunt (Clinical)

UVA /Encompass Health Rehab Hospital

545 Ray C. Hunt (Clinical)

560 Ray C. Hunt (Ivy Translational Research)

Neurology, Autism, Clinical Research, Public Health
Sciences, Psychiatry

415 Ray C. Hunt (Clinical)

Neurosurgery, Audiology, ENT, Rheumatology, Hand
Center, Spine Center, Imaging

400 Ray C. Hunt (Clinical)

Med Center Offices, Patient Friendly Access



Near-Term Master Plan, Approved 2018

- Transit, parking, and amenity development
- Central spine with distinct neighborhoods
- Clarified circulation
- Research/academic buildings



Full Build-Out Master Plan, Approved 2018

- Total capacity: 1.4M+ GSF
- Distinct neighborhoods
- Clarified circulation
- Clear drop-off
- Sequence of green streets and open spaces
- Opportunities for future connections across Fontaine Avenue to Grounds and back to the Medical Center





Aurbach

Institute of
Biotechnology

Snyder / LiSA

415
Ray C Hunt

400
Ray C Hunt

500
Ray C Hunt

UVA Encompass
Health

545
Ray C Hunt

560
Ray C Hunt

CEP

Parking Garage

Fontaine Avenue

RAY C. HUNT DRIVE (S)

RAY C. HUNT DRIVE (E)

RAY C. HUNT DRIVE (E)

Strickland Drive

Central Energy Plan - Site Plan



Base Site Plan with Expansion



Supporting Our 2030 Sustainability Goals

University Infrastructure

- Geo-exchange well fields
- Heat Recovery Chillers
- Thermal Storage Tanks
- High-Efficiency electric water heaters
- Zero combustion - Fossil Fuel Free

Site Related Strategies

- Light Pollution Reduction
- On-site Stormwater Management

Building Related Strategies

- Water use efficiency
- Optimized Energy Performance
- Whole Building Life Cycle Assessment
- Low Emitting Materials





Current View Looking South



Proposed View Looking South



Proposed View Looking Southeast

Energy Plant Equipment



Chillers



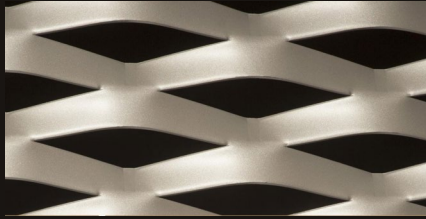
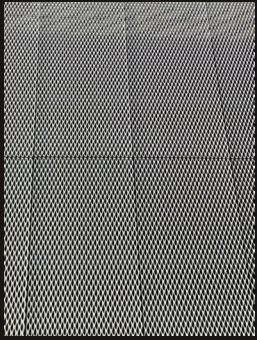
Pumps



Cooling Towers

Material Palette

- Architectural Expanded Metal Mesh



- Insulated Metal Panels



- Aluminum Curtain Wall





Proposed View Looking Southwest

Schematic Design Review: Institute of Biotechnology





Aerial View of Site Looking Southwest



Aurbach

Institute of
Biotechnology

Snyder/LISA

MOB 1

400
Ray C. Hunt

500
Ray C. Hunt

Encompass

545
Ray C. Hunt

Ivy Trans
Research

CEP

Exp. 1

Exp. 2

Parking Garage

Fontaine Avenue

RAY C. HUNT DRIVE (S)

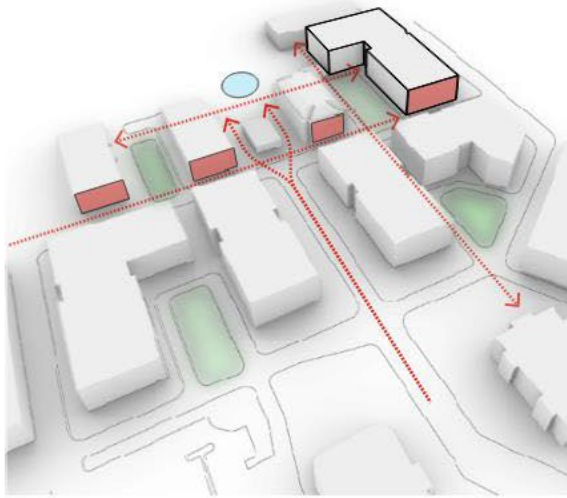
RAY C. HUNT DRIVE (N)

RAY C. HUNT DRIVE (E)

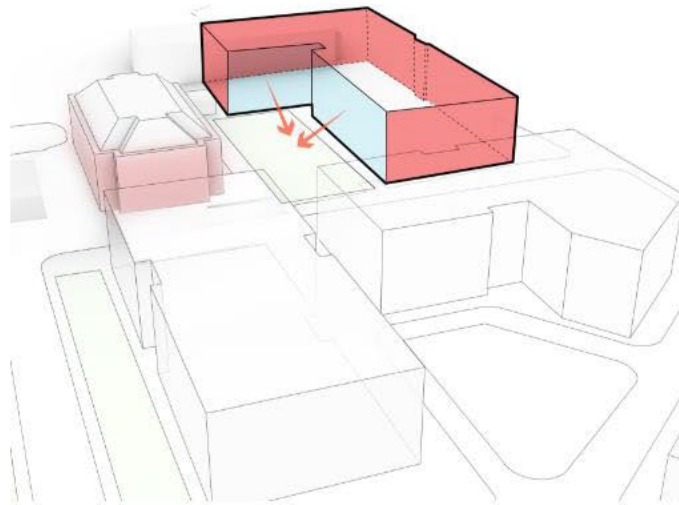
0 200'



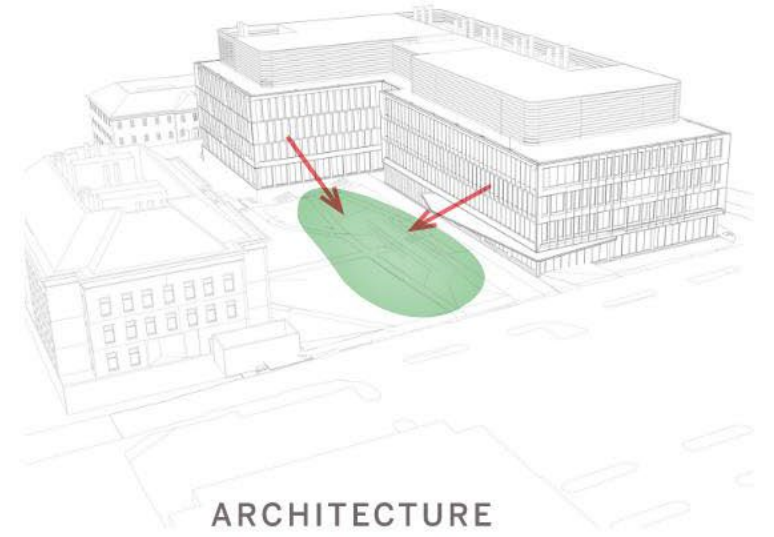
SITE PLAN



CONNECTIVITY

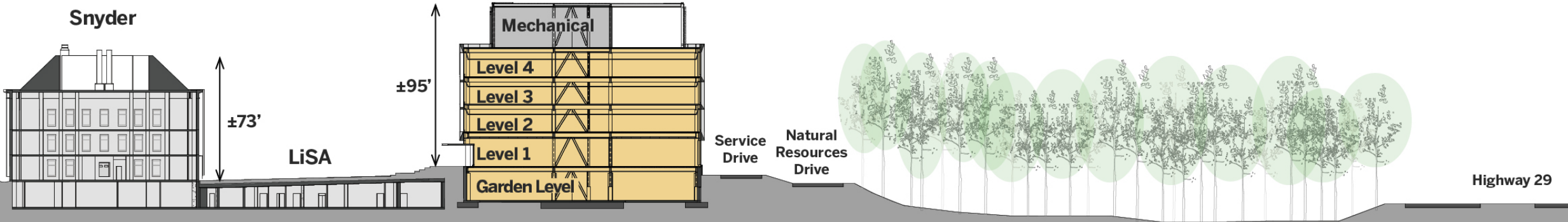


COURTYARD EMPHASIS

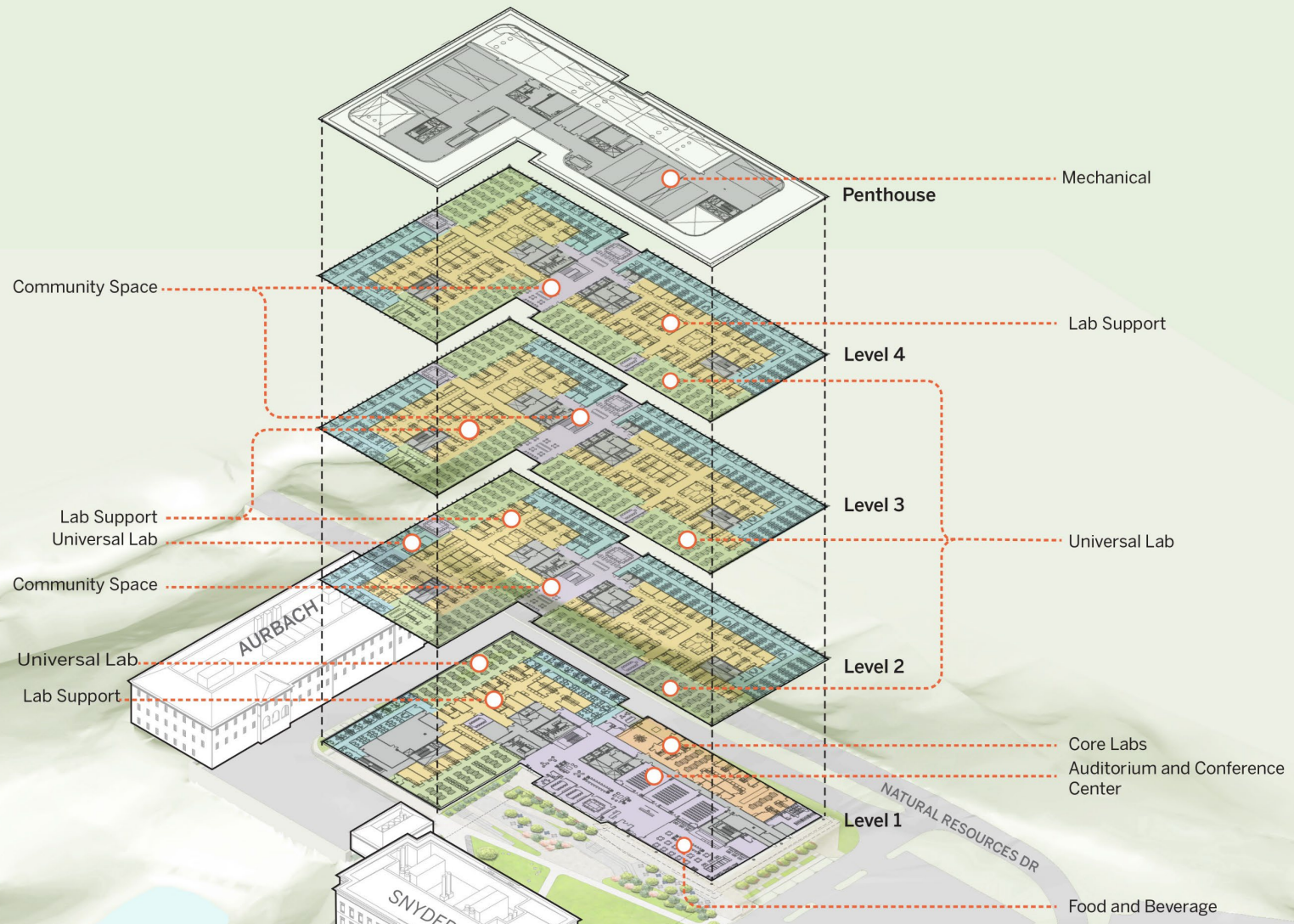


ARCHITECTURE

Institute of Biotechnology



Site Section Looking South



PROGRAM STACKING



Proposed View From Ray C. Hunt Drive Looking Southwest



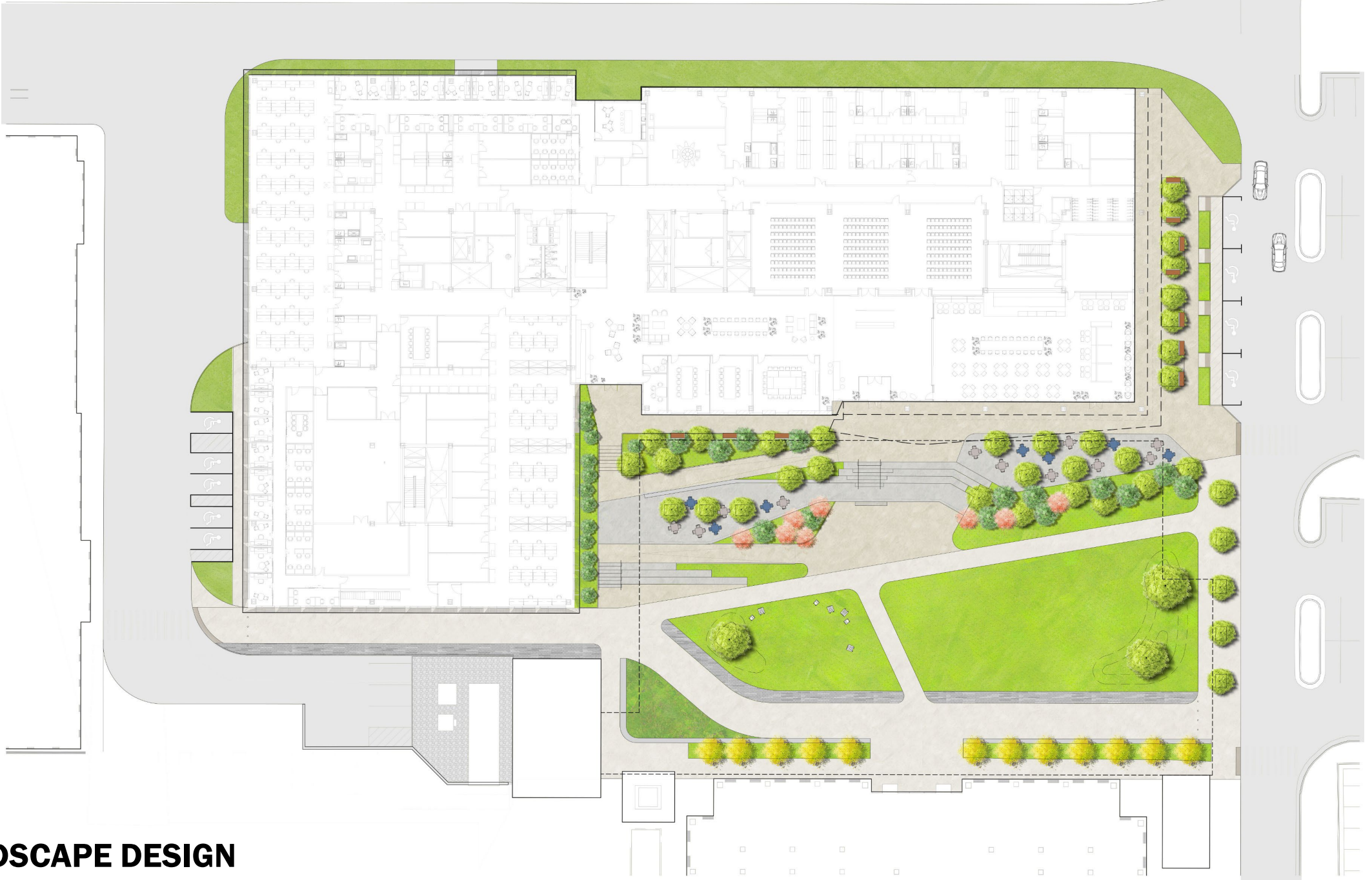
Proposed View Looking South



Proposed View from Natural Resources Drive Looking Southeast



Proposed View From Snyder Looking West



LANDSCAPE DESIGN

ENERGY EFFICIENCY & OPERATIONAL CARBON

- 1 HIGH PERFORMANCE FAÇADE
- 2 HEAT RECOVERY
- 3 CHILLED WATER SUPPLY FROM CENTRAL UTILITY PLANT
- 4 DEMAND CONTROLLED VENTILATION
- 5 ENERGY EFFICIENT LIGHTING DESIGN
- 6 ALL-ELECTRIC READY
- 7 SOLAR READY ROOFTOP

OCCUPANT HEALTH, WELLNESS, & COMFORT

- 1 HIGH QUALITY DAYLIGHT THROUGH EXTENSIVE SHADING
- 2 MERV 13 FILTERS AND CO2 CONTROL
- 3 PROMOTE ACTIVE DESIGN THROUGH INTERNAL STAIR
- 4 LOW VOC AND NON-TOXIC MATERIALS

EMBODIED CARBON & MATERIALS

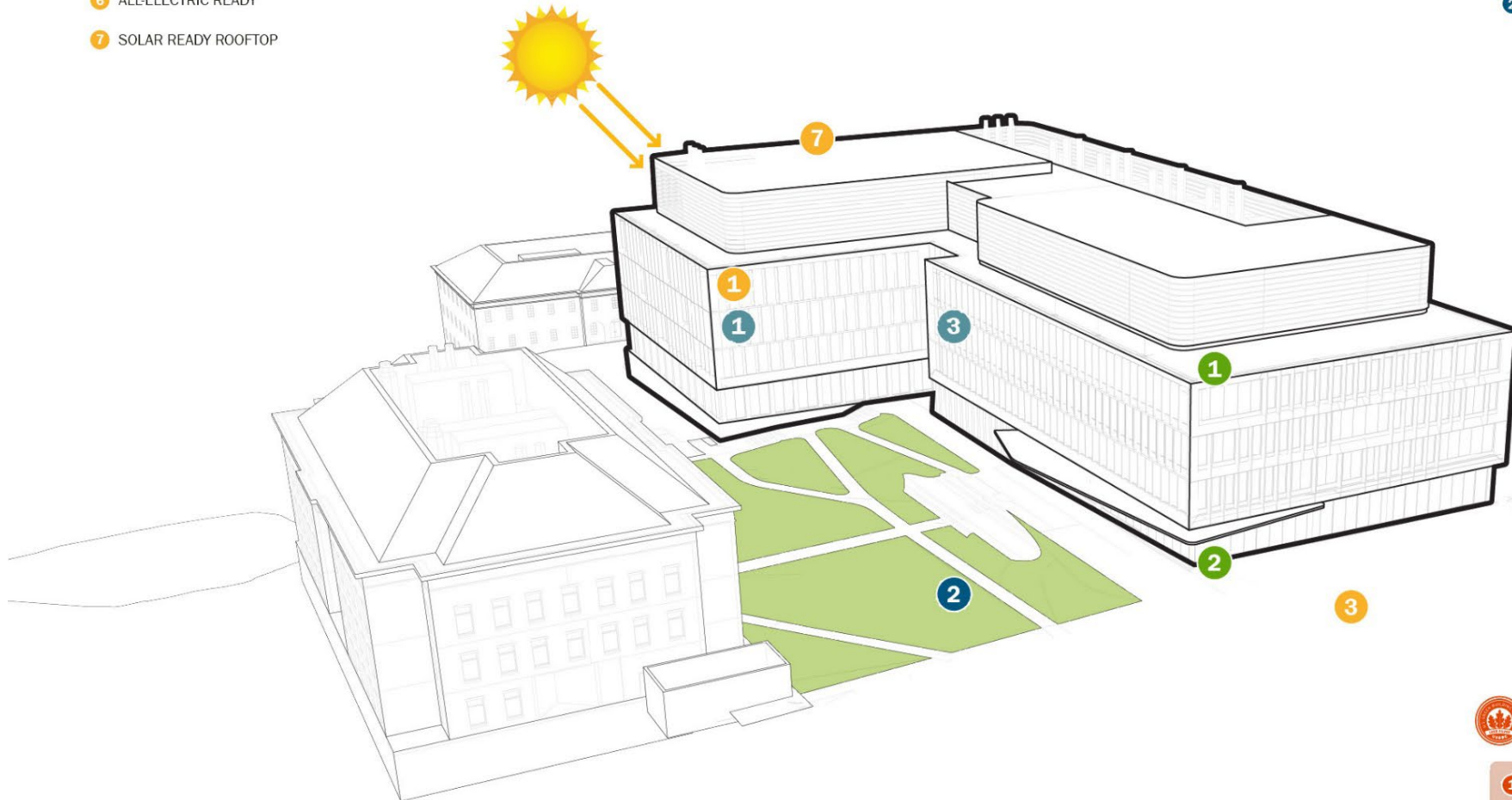
- 1 LOW CARBON RECYCLED MATERIALS
- 2 EFFECTIVE WASTE MANAGEMENT

SITE & LANDSCAPE

- 1 HIGH REFLECTANCE MATERIALS
- 2 BICYCLE RACKS AND SHOWER FACILITIES

WATER MANAGEMENT & CONSERVATION

- 1 LOW FLOW FIXTURES AND FITTINGS
- 2 NO PERMANENT IRRIGATION TO LANDSCAPE



BENCHMARKING

- 1 MINIMUM LEED SILVER



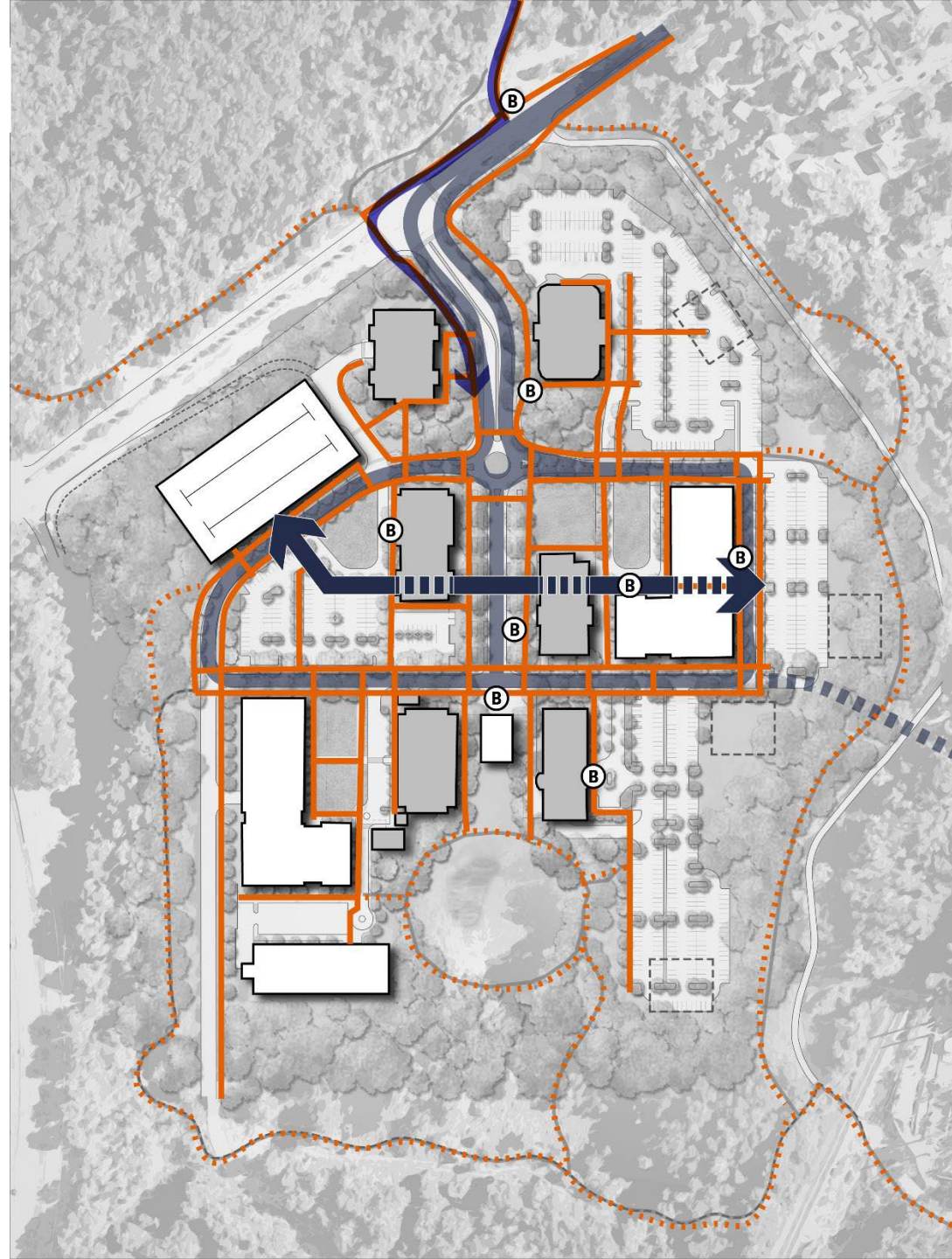
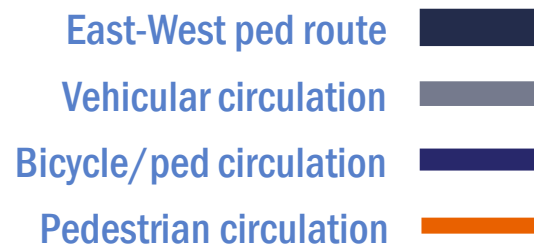
PHYSICAL MODEL

Schematic Design Review: Fontaine Roadway and Garage



Develop Connectivity to Grounds

- Stronger pedestrian and bicycle connections along Fontaine Avenue to Grounds through City's Smart Scale development
- Pedestrian and bicycle improvements with Fontaine
- Centralized bus stop and increased frequency of UTS buses and Health System shuttle service to Grounds





Aurbach

Institute of Biotechnology

Parking Garage

Fontaine Avenue

Snyder / LiSA

415 Ray C Hunt

400 Ray C Hunt

RAY C. HUNT DRIVE (S)

500 Ray C Hunt

UVA Encompass Health

545 Ray C Hunt

560 Ray C Hunt

CEP

Exp. 1

Exp. 2

Strickland

SITE PLAN



415

400

515

545

560

ROADWAY IMPROVEMENTS



CURRENT VIEW OF ENTRY LOOKING SOUTH



PROPOSED VIEW OF ENTRY ROAD LOOKING SOUTH





PROPOSED VIEW OF ROUNDABOUT LOOKING SOUTH

Fontaine Avenue



Parking Garage



400 Ray C. Hunt

Ray C. Hunt Dr.

PARKING GARAGE SITE PLAN



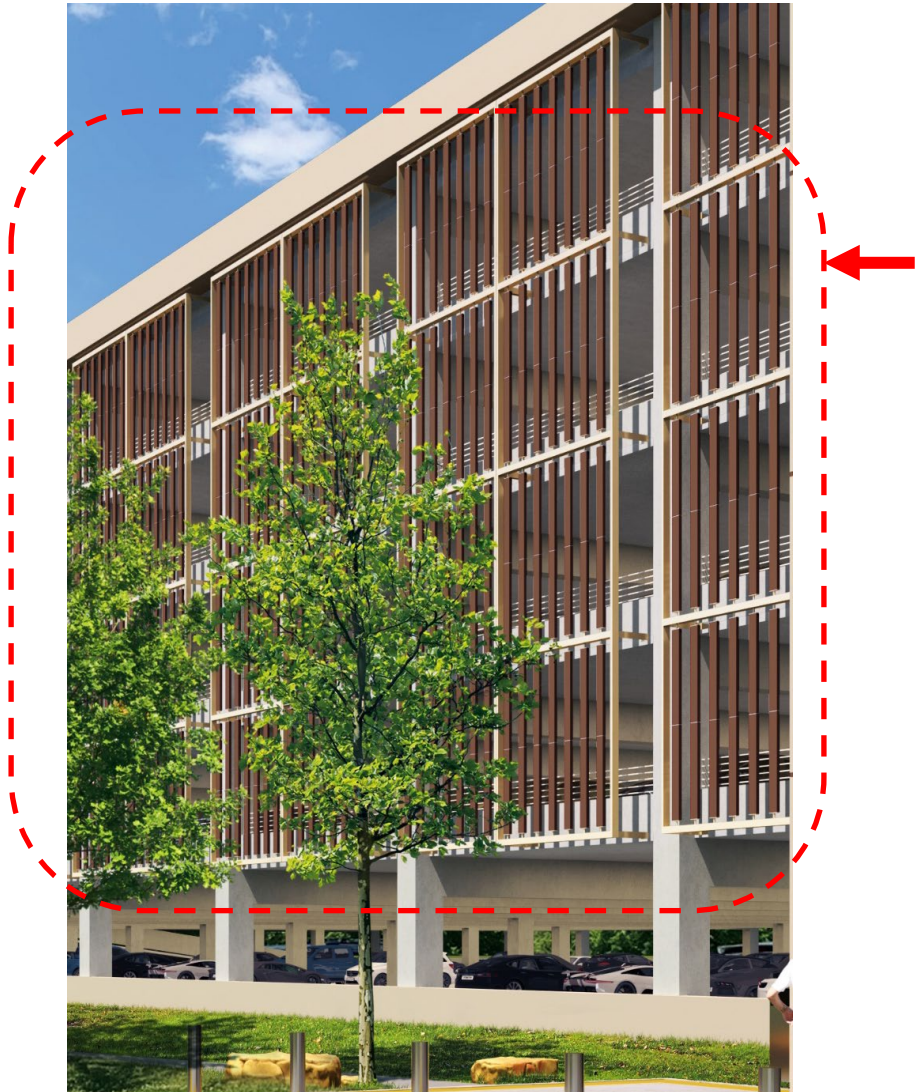
CURRENT VIEW LOOKING NORTHWEST



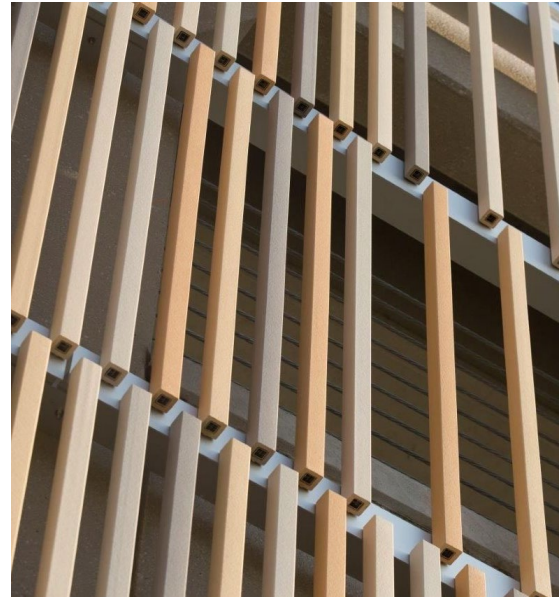
PROPOSED VIEW LOOKING NORTHWEST

MATERIALITY

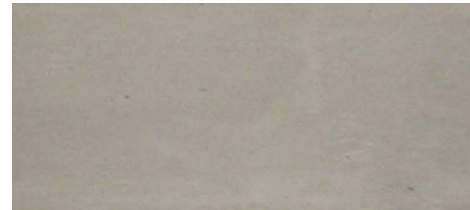
TERRA COTTA BAGUETTES /
ARCHITECTURAL PRECAST



INDIANA UNIVERSITY PARKING GARAGE, *RATIO ARCHITECTS* – Indianapolis, IN



PAVING AND WALKWAYS



TRANSIT STRUCTURE





CURRENT VIEW LOOKING NORTHEAST



PROPOSED VIEW LOOKING NORTHEAST



CURRENT VIEW LOOKING SOUTHEAST FROM FONTAINE AVENUE



PROPOSED VIEW LOOKING SOUTHEAST FROM FONTAINE AVENUE



PV-ready roof structure



Durable and resilient exterior materials



LED lighting with ambient light sensors



Building design coordinated with UVA 2030 Sustainability goals



EV parking spaces



Bike storage to promote multi-modal transportation



Low-carbon materials



Bird-friendly glazing



Native plantings enhance microclimate

Schematic Design Review: Center for Politics



Location Plan

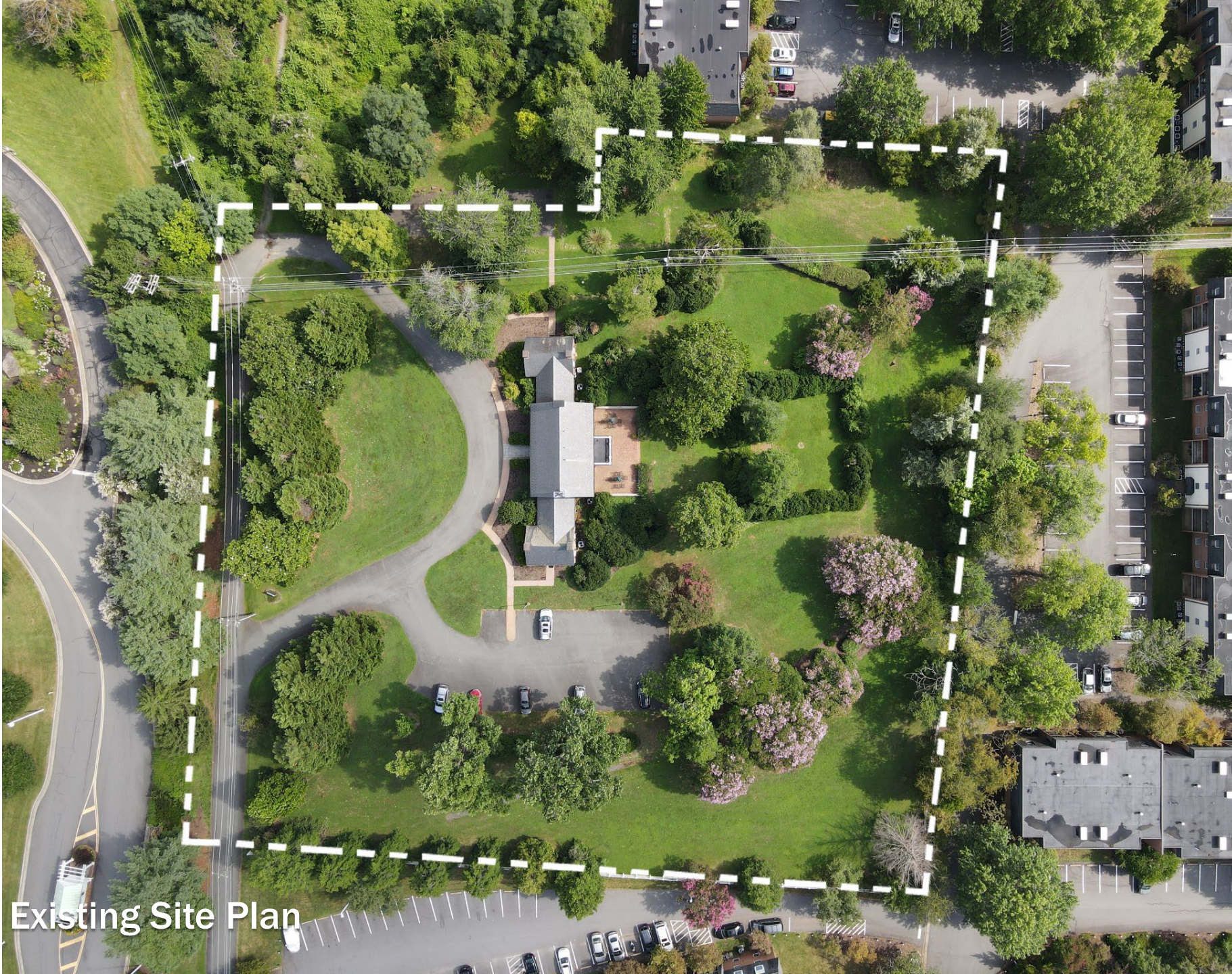


The Center for Politics

The Lawn

Proposed Site Plan





Existing Site Plan



Proposed Site Plan



The Range



Poplar Forest



Fayerweather Hall

Precedent Images



Georgian Country Home Extension
Francis Terry & Associates, Norfolk, UK



Musée de l'Orangerie
Paris, France

Precedent Images



Existing View of Montesano, Looking East



Existing View of Montesano, Looking Northeast



Proposed View of Montesano, Looking Northeast



Existing View of Montesano, Looking North



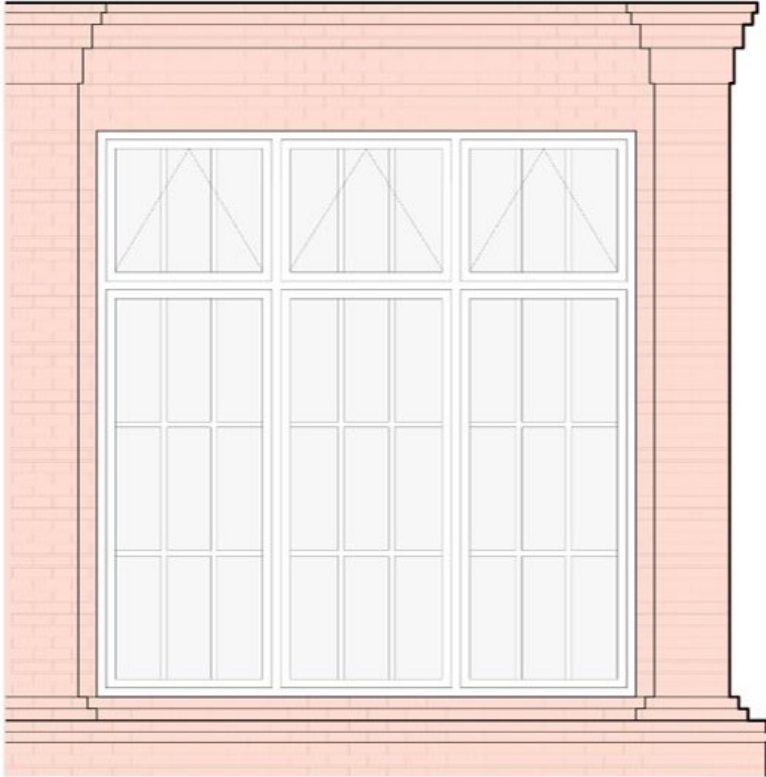
Proposed View of Montesano, Looking North



Proposed Section Through the House and Addition, Looking North



Existing View of Montesano, Looking West



Elevation Detail



Existing Portico



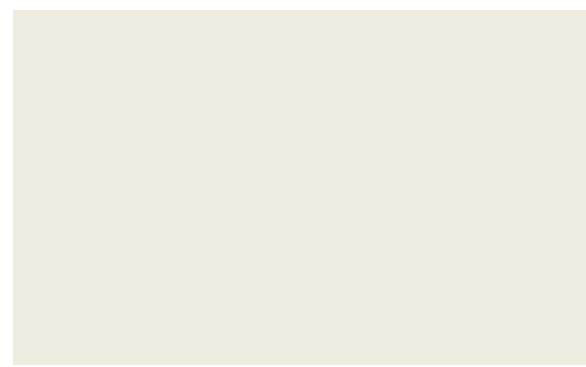
Brick Matching Existing House



Zinc Skylight/Flashing



Bluestone Pavers



Benjamin Moore "Swiss Coffee" Exterior Frames and Trim

Existing Portico Precedent and Materials Palette



Proposed View of Montesano, Looking Northwest



Insulate attic



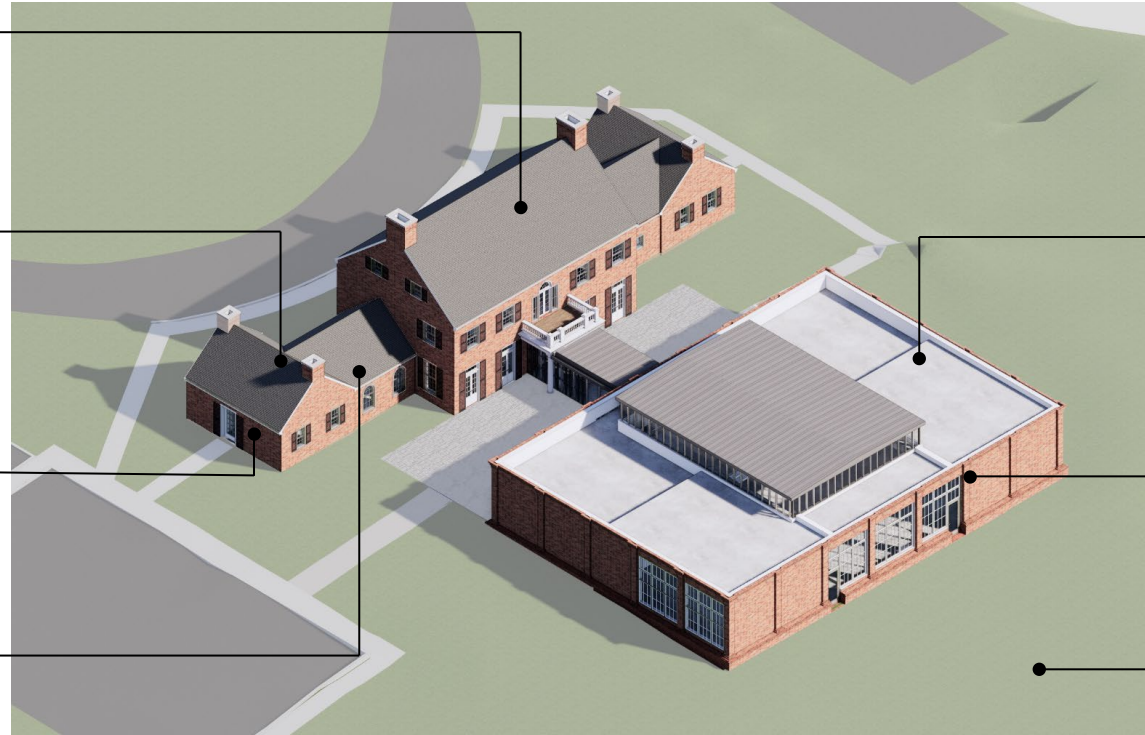
Convert from gas to all electric mechanical system aligning with UVA 2050 Fossil Fuel Free goals



Convert to efficient LED lighting



Weatherstrip and re-caulk existing doors and windows



LEED certified



PV ready roof structure



High performance envelope



Connection to municipal sewer and stormwater system

Sustainable Initiatives

Report by the Senior Vice President



Ivy Corridor



Football Operations Center & Olympic Sports Center



Alderman Library



Shumway Hall (McIntire School of Commerce)



Brandon Avenue Upper-Class Residence Hall



McCormick Road Pedestrian Improvements



McCormick Road prior to improvement project



Current view of McCormick Road (August 2023)

